

Culcheth *Life*

FREE EVERY MONTH

Issue: 173
August 2017

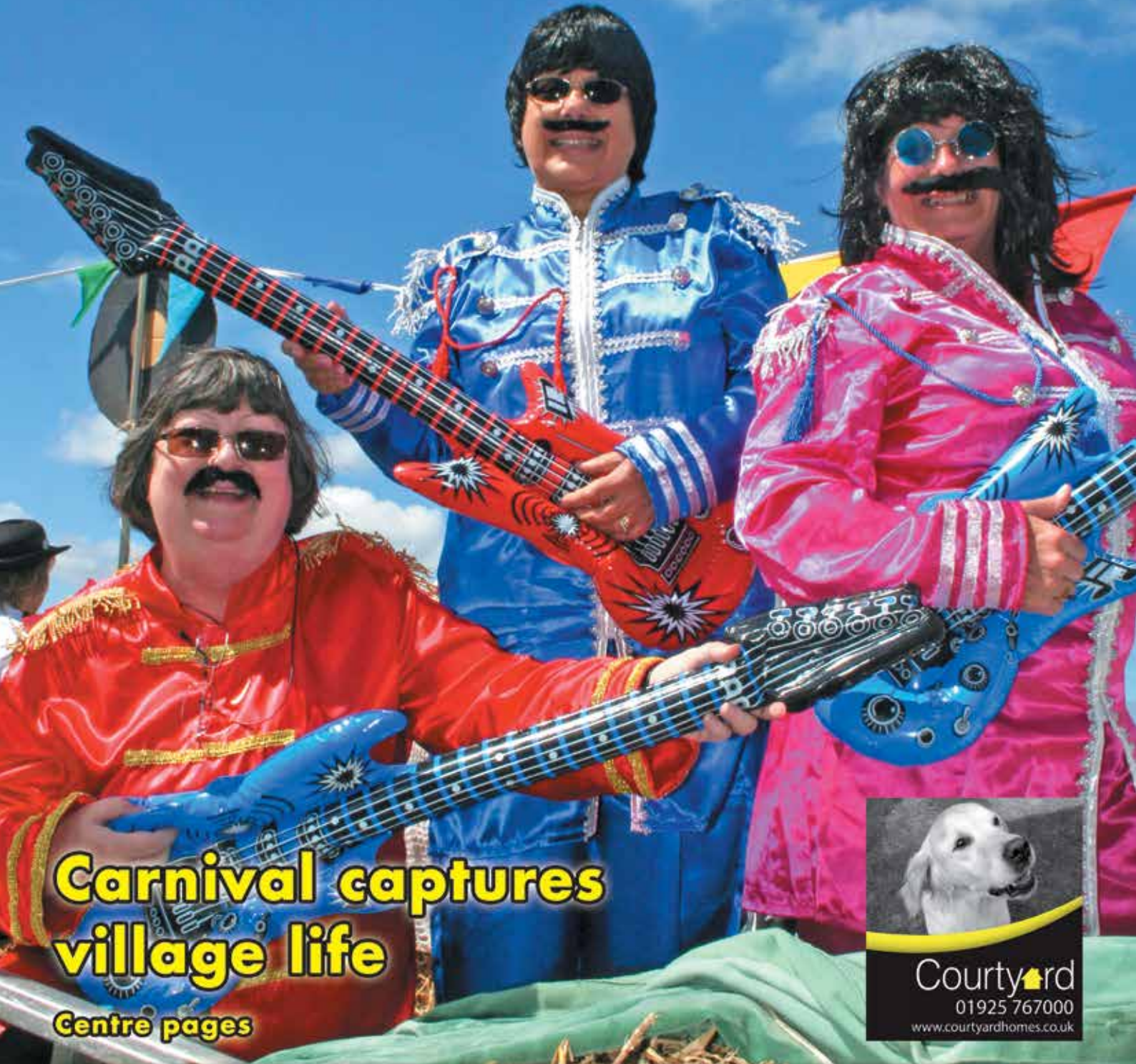
Dootsons
SOLICITORS

See main ad
Page 8

23 Jackson Avenue
Culcheth

0845 330 5700

CULCHETH • CROFT • GLAZEBURY • GLAZEBROOK • LOWTON • WINWICK AND SURROUNDING AREAS



**Carnival captures
village life**

Centre pages



Courtyard

01925 767000

www.courtyardhomes.co.uk

All the latest news: www.culchethlife.com

Editor
Gary Skentelbery

Production
Paul Walker

Advertising
James Balme

Freephone
0800 955 5247

Editorial
01925 623633

Email
info@culchethlife.com

Websites
www.culchethlife.com
www.frodshamlife.co.uk
www.lymmlife.co.uk
www.warrington-worldwide.co.uk
www.warrington.tv

Address
New Media Centre
Old Road Warrington
WA4 1AT

Culcheth Life is published monthly by Orbit News Ltd.

The contents of this magazine are fully protected by copyright and nothing may be reprinted or reproduced without prior permission of the publishers.

The publishers are not liable for any statement made or opinion expressed by third parties in this publication.

Printed by TwentyFourSeven

Editor's Comment



THERE is widespread disappointment, indeed, in some cases, anger, over the Government's announcement that the HS2 rail spur through Culcheth and Hollins Green is to go ahead, despite the decision to scrap the rolling stock depot at Golborne.

We are not surprised. Local campaigners have always argued that HS2 brought "all pain and no gain" to the Culcheth area and their argument is now even stronger. The Golborne depot would undoubtedly have had a serious environmental impact, but at least it would have created some local jobs. Now the jobs will move to Crewe, where the depot will now be built, but we will still get the devastation caused by the rail line.

Our view is that if the depot is not to be built, the line through Culcheth is no longer needed, if indeed it ever was.

But Transport Secretary Chris Grayling, who should have at least some knowledge of the Warrington area, having been an unsuccessful

Parliamentary candidate in Warrington South in 1997, is adamant that the spur is an important part of ensuring good connectivity for Preston, Lancaster, Carlisle and Scotland.

Culcheth and District Rail Action Group (CADRAG) continue to urge people to oppose HS2 and Warrington North MP Helen Jones has described the spur line as "the whitest of white elephants."

Both argue that there are strong financial and business reasons for deleting the spur line from the proposals.

It is true that the current proposed route may be less damaging to

Culcheth than the original suggestion and also that it is many years in the future. But the shadow of HS2 still hangs over Culcheth and in some ways is just as damaging as the line itself will be.

It is still possible to pass comment on the proposals so CADRAG is right in urging people to do so by visiting gov.uk/government/organisations/high-speed-two-limited

Deadline for the September issue of Culcheth Life is August 15

WI dates

SPEAKER at the next meeting of Croft WI, on August 16, will be Tom Jones, whose topic is "British Columbia the Easy Way."

There will be a competition for the best travel tip.

On September 9 there will be a barn dance at the Memorial Hall and on September 29 a MacMillan coffee morning at Croft Youth Centre.



CAMPBELL CROSSLEY & DAVIS
Licensed Insolvency Practitioners

Constructive solutions to debt for companies and individuals.



Ian Williamson
M: 07703 529212
Roger White
M: 07946 820299

www.campbell-crossley-davis.co.uk



Making it easier for your business to be successful

We care about you

You're a hard working entrepreneur and you need an accountant who does more than just tick the boxes.

You need a professional

Every one of our highly competent, skilful and professional people is here to help you.

You're our number one priority

You're more than just someone we prepare accounts for, the success of your business means everything to us.

Are you looking to make your business life easier?

Speak to one of our experts:

01925 761 600

or visit us at: stylesandco.co.uk

styles and co
chartered accountants

culcheth tyres
and autocentre

01925 766380 / 766987

Servicing, Engine Diagnostics, MOT Preparation & Presentation

Your Local Autocare Centre

ANY MAKE, ANY SIZE, ANY VEHICLE

**F
R
E
E**

Brake Safety Checks

Tyre Pressure Check & Inflation

Wheel/Alignment Checks

**F
R
E
E**

Unit 1D Taylor Business Park, Warrington Road, Risley, WA3 6BL



Call us on: **01942 607250**

www.elbfireplaces.co.uk

70 Twist Lane, Leigh, Lancashire WN7 4DP

Fire Surrounds, Stoves, Gas & Electric Fires



Established
30 YEARS

• No need to change your carpet

• made to measure fireplaces

• Over 75 displays over 2 floors

• Live wood burning stove on display

Marble Fireplace & Fire Fitted £995

Is your conservatory too cold to use in Winter?

Why not install a stove?



Class of 58 celebrate becoming 70-years-young

NEARLY 40 former pupils of the old Culcheth Secondary School and their partners attended one of the periodic reunions of "The Class of '58".

This year the group were all "70-years young" and the reunion was one of the best ever held.

It was held at Culcheth Sports Club - (formerly The Datsen) which was the place where many of the friends had attended their first rock 'n'roll dance.

Two classmates brought along their guitars to recreate the atmosphere of years gone by

Organised by a team led by Mrs Barbara Glover, those attending

enjoyed a super barbecue meal, with a commemorative birthday cake.

Many of the former pupils have kept up their friendships and it is hoped the reunions will continue for years to come.

Any pupils from the period 1958-1963 who have not attended a previous reunion, or have not been contacted, is asked to get in touch - they would be more than welcome at the next one.



HUNTER HEALEY
CHARTERED ACCOUNTANTS

- Professional, approachable, affordable
- Accounts preparation & tax returns for individuals & companies
- Bookkeeping, payroll & vat
- Capital Gains, Estate Planning & Probate Work
- Business start up advice
- First meeting free of charge

Call Nigel Healey now on 01925 767222

Abacus House, 450 Warrington Road, Culcheth WA3 5QX
www.hunterhealey.co.uk



SECURE STORAGE UNITS

24 hour access, competitive rents and flexible terms

Trident Industrial Estate, Birchwood, Warrington, WA3 6AX

- 24 hour access
- All inclusive rents from approx £80 (Inc. VAT) per month
- Flexible licences with 1 months notice
- 22 units from approx. 100 to 500 sq ft
- Drive in units with electrically operated roller shutter doors
- 24 hour CCTV
- Electric lighting and sockets
- Drive in units available
- Flexibility to change unit size at short notice

Eileen Bilton
PARTNERSHIP
(01925) 444700
www.eileen-bilton.com

ST.MODWEN
01925 825950
cmunro@stmodwen.co.uk



Opening Times:
Monday to Friday 9:30am - 4:30pm
Saturday 10am - 3:30pm



Call in store to find your perfect flooring solution.
Carpets, Vinyls, Karndean, Laminates, Screeding, Rugs

1st for Service
1st for Quality
1st for Choice

The Old Telephone Exchange, Common Lane, Culcheth, WA3 4HA
01925 555 820 | sales@courtyardcarpets.com
www.courtyardcarpets.co.uk

Sisters take charge at the Culcheth Arms

Meet the new owners of The Culcheth Arms – sisters Charlotte and Jen Hutchinson.

You may recognise them as the friendly faces from behind the bar, with the girls taking a huge leap from experienced bar staff to new owners.

Charlotte and Jen and the team have been working endlessly to create many upcoming events and ideas.

These include Northern Soul Nights, Wedding Fairs, Live Music on Sunday's, Gin & Cider Festival, as well as bringing a Casino to Culcheth for New Years Eve.

Although Charlotte and Jen may be new, they are planning a year of celebrations for the 5th year of

The Culcheth Arms.

The Culcheth Arms remains dog friendly, serving home cooked food, fine wine, cask ales and a large gin selection. Although there will be some slight menu changes in the future, don't worry the Famous Sunday Platters will still top the list.

Charlotte and Jen are also making the most of their function rooms by introducing a networking meeting within Culcheth that meets every 2nd Monday of the month, they also have room hire packages, and sit down menus available upon request.



Culcheth charity Beer Festival

NEWTON & District Jubilee Rotary Club will be holding their 7th Culcheth Beer Festival at Culcheth Sports Club on Friday and Saturday September 8 and 9.

The event, which runs from 5pm-11.30pm on the Friday and from noon until 11.30pm on the Saturday, helps raise funds for local good causes.

Entry costs just £5 and includes live music and a hog roast.

Newchurch Community Primary School

Invite you to New Intake Open Afternoon/Evening

Preparing to fly...

Newchurch will give every child a flying start by working in partnership with parents, staff and the community to develop and celebrate well-rounded citizens who will contribute in a positive way to society.

Weds 20th September 2017 at 1.30pm

Sat 30th September 2017 at 10am

Weds 4th October 2017 at 7pm

Children welcome

We are proud of our school – find out why!

Glebeland, Culcheth, Warrington. WA3 4DX
Telephone 01925 763427



Where Learning is Fun!

Culcheth Community Primary School

OPEN DAYS

October 18th and November 15th:
2pm and 6pm

Culcheth Community Primary School is a warm, welcoming, vibrant school that provides a first class education and a wide range of extra-curricular opportunities for all children. Wrap around care is provided by Culcheth Day Nursery, which shares the same site.

Individual visits to school warmly welcomed – please call in or phone to make an appointment

01925 764312

Further information can be found on our website www.culchethprimary.co.uk

"A caring environment in which pupils flourish", parents are 'overwhelmingly supportive of the school' and are 'delighted with the quality of education that their children are receiving' "

Ofsted June 2017

Our School Values



- Respect
- Teamwork
- Honesty and trust
- Friendship and kindness
- Creativity and courage
- Happiness, fun and enjoyment



Unit To Let

Greenwood Court

The office is a mid-terrace single storey property with parking to the front of the building for 2-3 cars and unlimited parking spaces on the main car park.

The offices are of modern construction standards; CAT 2 lighting, double glazing and air conditioning and heating. CAT 5 cabling has already been fitted throughout.

This recently converted 1000 Sq Ft. office and 750 sq ft warehouse comprises of a canteen area, WC and a meeting room, all done to a modern standard.



1,750 ft²

Property characteristics:

- High Speed Internet available with free connection
- CAT 5 cabling throughout office
- 3 compartment trunking throughout
- Stylish, contemporary interior design
- Located close to M6, M62 & A580
- Quiet, rural location
- Located on a Family Managed Business Park with very high occupancy rates (98%)
- Ample free parking included
- Air conditioned office
- Kitchen/Canteen area
- Beautiful landscaped areas
- Close to local amenities

01925 763851

TaylorBusinessPark

LOSING
TENANTS
TO SLOW
INTERNET?

Rural & Commercial
landlord specialist



CHESHIRE
TELECOM

Call now on 01925 640640

www.cheshiretelecom.co.uk

Woolly jumpers take centre stage at 18th Winwick Carnival

THE annual Winwick Carnival went without a hitch despite a protest petition from animal rights activists opposing the Lamb National sheep race.

A grey but dry day greeted many hundreds of local people to the 18th. Winwick Carnival.

The organisers, headed by Cllr. Cathy Mitchell, planned the event to be based very much around local themes with entertainers Joe Taylor and Gin Pit Rock Band providing the music and local groups and residents manning stalls and marshalling to ensure a very smoothly run fun packed day.

The main display area had acts all day including the Rosabeth Royales Majorettes, Ben Potter with his Birds of Prey display team who flew huge vultures and eagles and Bob Hogg who hosted his Lamb National sheep race and sheepdog displays.

Before the event a petition by animal rights activists had raised 8500 signatures, some 851 of them from the UK, to try to have

the race stopped. They felt that the sheep must be distressed to be running around a field jumping small fences but the feared protest did not materialise and the sheep racing proved massively popular with the crowd and the participants seemed to enjoy it too.

The event was officially opened by a speech from Winwick Rose Queen, Isobella Smithson, aged 11. The Mayor of Warrington, Cllr. Les Morgan, also gave a speech to the growing crowds.

Alongside the impressive fairground there were many other stalls providing entertainment, food and drink and information about local charities. The Winwick Leisure Centre bar did a brisk trade too.

Another great day in Warrington highlighting the strength, importance and popularity of these community fun days.



Residents discover shared love of poetry

A poetry group at Golborne House in Golborne, is proving exceptionally popular with residents.

The group is bringing people together through a new-found love of verse, stimulating discussion and rekindling old memories. One resident has even been contributing her own compositions.

The poetry group, which is dubbed 'Poetry Corner', meets every Monday in a cosy lounge at the home. Members of the group take it in turns to read poetry before discussing the poems and their themes.

The group, led by activities coordinator at Golborne House, Elizabeth Bates, is organised in association with The Reader, a charitable organisation which aims to improve people's lives by connecting them with literature. The charity organises reading groups nationwide, in a variety of establishments, including care homes, schools, workplaces and even prisons. Elizabeth underwent training to become a registered facilitator before founding the group at Golborne House.

Elizabeth was initially unsure about whether the poetry group would be popular with residents. In fact, the first session began slowly, with participants hesitant to contribute their thoughts. However, it only took a few prompts from Elizabeth, regarding themes and features of the poems, to ignite a conversation and for the group to become animated and engaged.

Members of the group at Golborne House have since been enjoying the sessions immensely. Favourite poems have included works by Wordsworth, Samuel Daniels and John Masefield. The discussions have a stimulating effect on residents, and people talk about the sessions for many days afterwards. Elizabeth says that the poems often evoke memories for participants and in this way the meetings are like a form of reminiscence therapy.

It has emerged that one member of the group, Mary Brookes, used to write her own poetry. Usually a reserved person, Mary was a vocal participant of the sessions from the first meeting and was keen to delve into the significance of particular

words and explore themes in the poems. In the second session, she declared that she used to write her own poetry. Mary has since provided some of her own poems for the group to read and said that she would like to try writing poetry again.

Commenting on the poetry group, Elizabeth said: "I have been amazed by the way residents have engaged with the group and the

energising effect it has had on our members. It gives me a real buzz to organise. The group has also been a great reminiscence tool, as residents remember poems from their past and frequently bring them in for the group to read. It evokes lots of memories and emotions. It's been a joy to be able to read the wonderful poetry written by Mary too."



From left to right: Barbara Harvey (a resident of Golborne House), Elizabeth Bates (activities coordinator at Golborne House), Mary Brookes (a resident of Golborne House and the author of poems which the group have been reading).

PRICES FROM ONLY
£1995
 INCLUDING FITTING

It's your conservatory... only better!



ecohybrid
 ALL YEAR ROUND INSULATION

KEEP YOUR COOL THIS SUMMER!

Conservatory Roof Conversions

- 1 day installation
- Reduces rain noise
- Stops sun glare
- Stops furniture fading
- No fuss - no mess
- Save on heating bills
- Suits ALL conservatories
- Nationwide service

"We didn't use our conservatory because it was always either too hot or too cold. Now we spend time in there every day."
 Mr & Mrs Cameron



4 SEASONS
 CONSERVATORY ROOFS

PAY NOTHING FOR 12 MONTHS THEN TAKE
2 YEARS
 INTEREST FREE CREDIT*



Full bespoke conservatory & orangery design & build service



Next generation sliding doors

multi slide
SLIDE & FOLD DOORS

Open up a New World!

- Easy, smooth operation
- No unsightly hinges
- No restriction on which part of the door you open
- No wasted space



Large showroom - OPEN 7 DAYS A WEEK

Call in or ring for free quotation



your CHOICE
 your home your choice

AS SEEN ON TV

0800 169 48 22
www.your-choice.uk.com

Your Choice Home Improvement Centre,
 590 Manchester Old Road,
 Middleton, Manchester M24 4PW

OPEN: Mon-Fri 9am-5pm
 Sat & Sun 10am-2pm

*Written details on request.
 Authorised and regulated by the Financial Conduct Authority



Keeping your Will up to date - don't put it off!

As part of our commitment to providing you with the best possible advice, we recommend that you review your Will every five years or so.

Family circumstances often change and Inheritance Tax rules are periodically amended

So it's important to keep your Will up to date

Fixed Fee for standard Wills for the individual and couples

- Wills
- Estate Planning
- Lasting Powers of Attorney & Registration of Enduring Powers of Attorney
- Trusts
- Deeds of Variation
- Probate & Administration of Estates Service
- Court of Protection applications

Dootsons
SOLICITORS



23 Jackson Avenue, Culcheth

01925 765212

Email: probs@dootsons.co.uk

www.dootsons.co.uk

CULCHETH • LEIGH • NEWTON • ATHERTON

Croft Carnival cap

CROFT Carnival captured 'village life' as community groups paraded through the village.

Local community groups dressed for the occasion with various themes from Croft WI's float of the Beatles, celebrating 50 years of the iconic pop group, to the School of Rock from Croft Primary School.

Mayor of Warrington Cllr Les Morgan joined the occasion alongside Croft Parish Council Chairman Keith Bland.

Following the carnival parade villagers packed onto the Memorial

field which basked in glorious sunshine as Olivia Bellis was crowned Carnival Queen and Evie Twist was crowned Carnival Princess.

Rosebud was Alice Maloney while Croft Grandparent was Ernest Rudd.

Meanwhile an array of scarecrows decorated the village with a "village" life theme.



captures village life



The Gardening Guide



“ Continue to feed and water Tomatoes regularly, making sure that the plants are evenly moist. ”

*Simon Box,
Plant Area Specialist*

- Dahlias will be at their best now and will need feeding, watering and dead heading to keep them performing for as long as possible
- The lawn will need mowing regularly but if you are going away try leaving the cuttings on the lawn to help retain moisture
- Animals are starting to prepare for the winter so ensure you are offering a wide range of food
- Stop feeding roses now as you will encourage them to produce soft sappy growth which will be more prone to winter damage or disease and dieback

For events and online shopping visit bents.co.uk

GARDEN | HOME | LIFE | FOOD



THE
*MOMENT
YOU BITE
INTO A
JUICY
STRAW
BERRY
*



bents.co.uk

Enjoy every moment |  **bents**

CULCHETH & GLAZEBURY PARISH COUNCIL NEWS

Your Parish Councillors

NEWCHURCH WARD



Ben Alldred
ben.allred2016
@protonmail.com



Jacqui Johnson
01925 763435



Margaret Webber
01925 762617

GLAZEBURY & MEE BROW WARD



Anne Roberts
01925 763047



Joan Grime
01925 763631

CULCHETH WARD



Peter Holmes
Pdholmes
@gmail.com



Keith Bland
01925 766641



Sue Bland
01925 766641



Valerie Allen
01925 767274



Ileyne Hutchinson
01925 765131

The Warrington Local Plan - preferred development option

In 2015 our Local Plan was challenged in the High Court and together with pressures at National and Devolution level the amount of housing needed for the next 20 years has been re-examined, and a preferred option been produced. This is being consulted on from July 18th to September 12th. Documents will be in Culcheth Library but there will also be a Public Event providing information on Thursday August 17th in Culcheth Library from 3.00 to 8.00 pm. This was not on the original list but your Councillors made it clear that Culcheth should have an event.

The documents are also on www.warrington.gov.uk search for Local Plan Review. This gives an explanation then makes available the documents behind the proposal.

The preferred option, for the whole of Warrington, is for 15,000 houses on sites in the urban area and 9,000 houses in the Green Belt. There are also plans for an increase in employment land, including using the Green Belt.

In addition to the associated documents there is the recognition that improvements in the infrastructure will be required.

We are not given the final sites, these will be in the draft Local Plan which goes out for consultation early next year, when the comments on these present options are analysed. Green belt housing numbers proposed for the incremental growth option for Culcheth are 300, with 50 for Glazebury. This is in addition to non Green Belt housing.

It is important to take part in this consultation, to give your opinion and your local information, both on sites and infrastructure. There will be more information from us when we have worked our way through all the documents.

Friends of Culcheth Library - your village needs you!

For our Library to be successful we need a strong Friends group giving a variety of methods of support. We intend to leaflet Culcheth, Glazebury and Croft with information backed by a form requesting your help. Please look out for it and please let us know how you can help. We will also have drop in events at the library on the Saturday mornings of August 12th and September 2nd where you can find out more.

Parkside Colliery proposals

Your Parish Councillors have visited events to look at these proposals for Green Belt Development and a link road. We will look at these proposals in terms of the traffic impact on our villages and the motorway system. Information and a consultation which is open to Friday 15th of September is available on www.sthelens.gov.uk/parksidelinkroad

Transport for the North - TfN

TfN have produced strategic proposals and background documents for road and rail throughout the North. We attended an information event on this where issues of costs, buses, toll and swing bridges and the status and costs of TfN were raised. Website: transportforthenorth.com

HS2

For the section through Warrington the preferred route has been confirmed, however this is the start of further stages. Today to 2018 Design development and Environmental impact assessment (EIA)
2018 Expected consultation on working draft EIA, EqIA and potential route refinements
2019 Phase 2b hybrid Bill deposit
2022 Royal Assent
2023 Construction begins, 2033 Operations begin

SIDs

Speed indicator devices are now in place on Common Lane near Twiss Green Lane and Warrington Road to the South of the Greyhound roundabout. More are planned.

Christmas Market Day is Saturday November 25th. More details to come.

Publication of information

The Parish Council has adopted a publication of Information scheme. Details of who we are, what we do and how the public can access information is published on the main notice boards, in Culcheth Library and on our website www.culchethandglazebury.org.uk

Bents celebrate 80th anniversary



BENTS Garden & Home celebrated its 80th anniversary in style with a weekend full of fun and games.

Customers young and old joined the Bent family for what was a very special occasion; a party to mark 80 years since Alfred and Margaret Bent started to sell roses in the front garden of their terraced house just yards from where the Centre is currently located.

Much of the weekend's entertainment centred around a temporary lawned area hosting giant garden games, a summer barbecue and celebratory photo booth with face painting, treasure hunt, balloons, burgers and cupcakes and Bents' in house DJ adding to the atmosphere.

Matthew Bent, Managing Director at Bents Garden & Home said: "We are all hugely proud of the business my grandparents started and it has always been our family's aim to provide a warm and welcoming atmosphere, somewhere everyone can enjoy. We remain family owned and run and with 14 grandchildren, between myself and my sisters, I'm pretty confident that it will remain

that way for many more years to come."

As part of the celebration events Culcheth Life Editor Gary Skentelbery was given a guided tour of the site by Matthew and Ron Bent, which included lunch and a cream tea.

Gary said: "I would like to congratulate the Bent family on their fantastic family business. It shows what can be achieved by hard work and dedication.

"I am sure there have been highs and lows on this 80 year journey - but they have developed a fantastic facility which has provided a major boost to the local economy. Long may it continue."



Open Evening

Thursday

5th October 2017



Arrival and Registration

6.00pm

Headteacher Presentation

6.30pm and 7.00pm

Warrington Road, Culcheth, WA3 5HH

Phone: 01925 767587

www.culchethhigh.co.uk

- RESPECT
- HONESTY
- EXCELLENCE

The Cherry Tree

2 meals for £10 served all day Mon-Fri

£5 OFF YOUR FOOD BILL

when you spend £20 during August 2017

Visit www.thecherrytreewarrington.co.uk for more offers

35 Common Lane, Culcheth, Warrington. WA3 4EX
01925 762624 email: bun212199@mbplc.com

HAVANA'S
Your Good Food Place

Coffee & Sandwich Bar, Culcheth
Hot and Cold Food • Healthy Menu
13 Grands Crus Coffees • Protein Shakes and Smoothies
Private and Corporate Catering

Free coffee with this advert

www.havanascalcheth.com | Facebook @havanassocialmedia
01925 762792 | 18 Church Lane, Culcheth

GENESIS SHOES
SUMMER
SPECTACULAR SALE
UP TO 50% OFF!!
SALE CONTINUES
NEW STOCK COMING SEPTEMBER

60 Lodge Drive, Culcheth, WA3 4ER
T: 01925 762463

CULCHETH GIN & CIDER FESTIVAL

SATURDAY 26TH AUGUST
1PM - 12PM
SUNDAY 27TH AUGUST
12PM - 7PM

Est 2013
THE CULCHETH ARMS
Restaurant & Bar
THE CULCHETH ARMS, 1 CHURCH LANE, WA3 5DL

ALL 4 PETS
(Side of Greyhound Hotel), East Lancs Rd, Leigh, WN7 3SE

LET US LOOK AFTER YOUR CHRISHED PETS WHILST YOU ARE ON HOLIDAY

- All exercised daily
- On site vets
- Groomers
- Beautiful surroundings

Vets
For all pet health issues
Private Boarding
Dogs & Cats
Pet & Horsefeed Shop
Horse Wormers, Dog, Cat Flea, Worm Treatments
Water Walkies
For mobility & weight management
Dog Groomers
10% off first groom

THE COMPLETE SERVICE FOR YOUR PET
Tel: **01942 671215** for more information

twentyfour seven
design & print ltd

01925 240247
WWW.247PRINT.NET

To get your business on track and in the 'Pink' contact James Bryan on 01925 631592

Traditional Values
MODERN IDEAS

Doris celebrates 100 years!

DORIS Maines celebrated her 100th birthday at Culcheth – and helped family and friends to plant a rose tree to mark the occasion.

The tree was, appropriately, named "Simply the Best"

Doris was born at Leigh in July 1917 but has lived in the Culcheth area since her marriage in 1941.

Her family spans five generations - one daughter, two grandchildren, four great grandchildren and one great great granddaughter.

She celebrated her birthday with family and friends at the Culcheth Sports and Social Club and again with friends and neighbours at Chatburn Court when the rose tree was planted.

The highlight of her birthday was receiving a card from the Queen.



Colourful reminder of a sunny holiday

A HOLIDAY in Portugal for Culcheth couple John and Jean Unsworth three years ago has led to a spectacular display of flowers in the village.

They spotted a colourful display of flowers and decided they would like to see them growing back home.

John said: "I'm no gardener – I didn't even know what the flowers were at first. But I found out they were osteospermum and when I came back home I managed to get some."

"I planted some in the garden and then along the edge of a field I own in Bent Lane – and they just started spreading."

Over the years, the display became a blaze of colour – particularly when the sun was out – and John added to it with various other flowers, such as poppies,

sunflowers and foxgloves

Soon they were attracting comments from local residents. People in cars were stopping to admire them. Neighbours were delighted.

John said: "Apparently the osteospermum flower from May through to September, or even October. But when the sun goes in, they close up so you really need to see them when the sun is shining."

"I'm a complete novice when it comes to gardening, I bought some other seeds to add variety and colour when the osteospermum isn't flowering and it has spread from there."

"I just want the flowers to please people and this year, when we have had some particularly sunny periods, they certainly have done that."



LOCAL CARPETS

**All HBS Branded Carpets
from only £9.99m2**

PLUS

**FREE FITTING*
FREE UNDERLAY*
FREE DELIVERY*
FREE MEASURING**

*Within 7 miles, 8mm standard, min16m2, hsl



**Clearance
Mayfair Bed
Only 10 Left**

5 Colours to choose from
10 year manufactures
guarantee

RRP £599
Was £399

**Now +
£245**

PLUS
FREE HEADBOARD
and
FREE DELIVERY

25-27 Orchard St, Warrington WA1 2TE
t: 01925 419423

4 Gas St, Leigh WN7 4PD
t: 01942 665560

OPEN 7 DAYS A WEEK
Monday to Saturday, 9.30am - 5pm Sunday, 11am - 4pm
*When purchasing equivalent lock underlay minimum size applies

www.local-carpets.com



NEWTON & DISTRICT JUBILEE ROTARY CLUB PRESENT

CULCHETH BEER FESTIVAL 2017

Friday & Saturday September 8th & 9th
Fri - 5pm to 11.30pm / Saturday - Noon to 11.30pm
Culcheth Sports Club (Daten), Charnock Road, Culcheth WA3 5SH

40+ Real Ales
Bottled Lagers
Draught Ciders
Wine & Prosecco

Entry - £5
NETT PROCEEDS GO TO
ROTARY CHARITY WORK

Live Music
Hog Roast

www.culchethbeerfestival.org

Abigail set to be a Total Warrior!

A young Culcheth woman is set to be a "Total Warrior" to raise funds for the Stroke Association, after her grandad suffered a life-changing stroke.

Abigail Nicholson, 23, is taking on the challenging Total Warrior 10k obstacle course in the Lake District on Saturday August 05.

Abigail's grandad, Eric Taylor, had a severe stroke in 2014, which left him without the use of his left side, as well as sight loss and hearing problems.

Abigail said: "My grandma passed away in May 2014 and it was around three weeks later that my grandad had his stroke. As his stroke was so severe, he is now unable to walk and uses a wheelchair."

Abigail is planning to take on the gruelling Total Warrior 10k obstacle race in the Lake District. Taking on, rivers, mud, woodland and rugged Lake District terrain, Abigail will have to overcome 25 - 30 punishing Total Warrior obstacles over the 10k course.

Abigail added: "Considering I used to get out of breath running up the stairs, I think my training is going well. I can now run four miles, and I even took part in a 14 mile canal relay last week, which was hard but manageable as it was broken up into shorter distances.

"I've chosen to raise money for the Stroke Association to help families like mine to get the support they need. I also want people to understand how devastating stroke can be. Before my

grandad had his stroke, I had no idea how severely the condition can affect a person."

Mikaela Leape, Community and Events Fundraiser at the Stroke Association, said: "With around 100,000 strokes in the UK each year, it's vital we have people like Abigail to help raise vital funds. We're incredibly grateful to Abigail for taking on the Total Warrior 10k for the Stroke Association; the money raised will go a long way in helping to support others who are living with the effects of stroke, as well as their families and carers."

To sponsor Abigail, visit www.justgiving.com/fundraising/abigail-nicholson. For more information about stroke, contact the Helpline on 0303 30 33 100 or visit www.stroke.org.uk



simple solutions
Financial Management Ltd
INVESTMENTS & PENSIONS

INVESTMENTS
Our investment expertise will ensure that you have the most suitable investment to help you achieve your financial goals.
We use:
• Asset Allocation • Risk Profiling • Diversification • Correlation

PENSIONS
Pensions have changed since the March 2014 budget and you now have a lot more options to consider

TECHNOLOGY
Simple Solutions uses the latest technology to keep you updated, even when you are on the move or abroad, check out our website for more details.

1st Floor, 67 London Road
Stockton Heath, Warrington
WA4 6SG

Tel: 01925 266628 Fax: 01925 267043
www.simplesolutions.financial @SimpSolsIFA

Simple Solutions Financial Management Ltd is authorised & regulated by the FCA. The registered office is 1st Floor, 67 London Road Stockton Heath, Warrington WA4 6SG. Registered in England & Wales. The company Re No 6920858.



Culcheth and Glazebury Parish Council

VACANCIES

PART-TIME LITTER WARDEN

The Parish Council has 2 vacancies for a part time Litter Wardens:

1. Culcheth Green and surrounding areas:
Removal of litter from Culcheth Green, Play area, Library bus stop and Millennium Garden from 8.00am to 10.00am on Saturday and Sunday.
2. Glazebury and Mee Brow:
Removal of litter along the A574 from the Greyhound Island to the Raven Inn, and from the Raven Inn to Churchill Avenue (including the children's play areas at Warrington Road Glazebury and at Eden Avenue Mee Brow).

These can be combined into one job subject to agreement.

Pay:

The National Living Wage applies, currently £8.45p per hour for adults for duty 1. 4 hours per week and for duty 2. 6 hours per week plus a mileage allowance if appropriate.

If you are interested in this job please write giving your reasons for applying and full contact details to:

**The Clerk, Culcheth and Glazebury Parish Council,
9 Wigshaw Lane, Culcheth. WA3 4LX.
or email Culcheth.clerk@btinternet.com**



Blooming marvellous – Glazebury wins best school garden award

GLAZEBURY CE Primary School won the “Best Primary School Garden” award at the RHS Tatton Flower Show.

Every child in the school was involved in planning, creating and building the show garden, based on the story of the Pied Piper of Hamelin – a celebration of the great British rat!

As a result of their success, some of the youngsters were interviewed by and featured on BBC television.

It was in September last year, that pupils returned to the school to find a new community garden had been created over the summer holiday.

Children had worked hard to design elements of the garden, but seeing it completed was a fabulous start to the new school year.

Since then, a garden club has been formed and lessons were held

in the garden to teach pupils more about horticulture and the needs of the plants and wildlife living there.

All this led to the decision to enter the school garden competition at the RHS Tatton Flower Show.

A great deal of hard work went into building the garden on site – with every pupil involved and particularly the members of the gardening club.

Just seeing the garden at the show gave everyone at the school a great sense of pride – and many parents, children and members of the wider school community bought tickets for the show to see it.

And when they learned they had won the “Best Primary School Garden” it capped it all!

New homes plan gets the go-ahead

PLANS to demolish a house at Culcheth and replace it with three new properties have been given the go-ahead – despite objections.

Culcheth and Glazebury Parish Council and 16 local residents had opposed the scheme in Hob Hey Lane.

The scheme involves an existing house, outbuildings and garden which has two accesses onto Hob Hey Lane.

The borough council’s development management committee has agreed that the house can be demolished and three two-and-half storey houses with integral garages built on the site.

The committee was told one of the properties would continue to have two access points onto Hob Hey Lane and the other two would share a private drive.

Important trees and hedgerows on the site will be retained, but the front hedge will be replaced with a new one.

Earlier outline proposals for three houses on the site were approved in 2013.

Objectors claimed the scheme would result in over-development of the site, and would be out of keeping with the area. They believe the properties would, in fact, be three storeys, and would be “an eyesore.”

They claimed the site had been subject to flooding in the past, there would be a loss of privacy for neighbours and that approval of the scheme could “open the floodgates” for further similar applications.

Officers had recommended the scheme be approved.

CLASSIFIED

CARPET CLEANING

A1 STAINBUSTERS. A Warrington company cleaning Carpets, Upholstery (Leather + Fabric) and Curtains in situ. FREE quotes for domestic and commercial. **Call John on 01925 852088 or 07765314080** (01/17)

SIMPLY THE BEST CARPET CLEAN YOU will ever have. Cleaners UK Ltd. Est. 28 yrs. Have your carpets & sofas beautifully deep cleaned leaving them fresh smelling & colour restored. Latest & best methods. Dry/steam. Leather cleaning, oriental rug specialist. Professional, reliable & affordable. **For more info call Neil Riley on 01925 264989/ 07831 336060 www.cleaners-uk.net** (01/18)

CHIROPODY

KATHRYN GRACE AND ASSOCIATES, D.Pod.M., M.Ch.S., HCPC registered. Chiropractors/ Podiatrists, 30 years experience, offering friendly and professional footcare, also Gait Analysis. Care home & commercial contracts are welcome. Culcheth based. **Tel 01925 762404 www.parkviewcentre.co.uk** (012/17)

CLEANING SERVICES

arleys angels

- Spring Clean Specialists
- Presenting your home for sale
- Moving house
- After building work cleans

01925 266834
... because you're worth it!

COMPUTERS

AED COMPUTER SERVICES. For all your PC servicing requirements including: Hardware repairs /upgrades, Software / Operating System re-installs, Virus removal, basic training: **Tel: 01925 766426, mobile: 07870 260657, email: enquiries@aed-cs.com, Web: http://www.aed-cs.com** (04/18)

Advertise in the Classifieds from as little as £6 per month!

Call 0800 955 5247

GARDENING SERVICES

JP LANDSCAPES

We are approved & recommended by Fenchurch
For contractors call 01927 264 888 and email info@jp.co.uk

- Block Paving - Tarmac
- Slabbing - Driveways
- Patios - Graveling
- Brickwork - Steps
- Fencing - Decking
- Power washing - Turfing
- Driveway Repairs

For a FREE no obligation quote please call
0800 858 9961 or 01925 393 188
or call John direct on
07818 383 3847 jplandscapes56@gmail.com

Vale Avenue, Warrington, WA2 8AY

HOME SERVICES

ATLAS
Your friendly local independent pest controllers

SUMMER SPECIALS:

WASP CONTROL

£35

INVASIVE BEE CONTROL

£55

Affordable, professional, guaranteed service.
Fully insured, fixed prices - no surprises once on site!
Discrete vehicles, no embarrassing signs
07999 487 925 / 01925 445 222
www.atlas4u.co.uk

PAYROLL

WHY TRY TO BE A PAYE EXPERT? Watkinson Black can provide a cost effective payroll service, releasing you to concentrate on your business. **For further details please phone: 01925 413210 or e-mail: info@warringtonaccountants.co.uk** (05/1)

TREE SURGERY

ROBERT WOOLSTENCROFT TREE Services. Commercial and Domestic tree and Landscaping services. NPTC qualified, Safe Contractor approved and fully insured. Friendly and reliable, local family business. **Contact Robert 01942 673736 or 07811 954065** (08/17)

TUITION

SPANISH LESSONS IN CULCETH Daytime tuition in Spanish grammar for adults – beginners or revision. Experienced retired tutor; friendly relaxed lessons for singles or couples. **Tel 01925 765 962 or Mob 07922 155 275** (01/17)

WINDOWS & GLAZING

LEIGH GLASS LTD. For all of your glass requirements please contact. **Tel 01942 678440 Fax 01942 261728 email leighglass@hotmail.co.uk** (01/18)

Promote your business to thousands of local people with a

Culcheth Life

classified for just £72 plus VAT for six months.

For more details call James Bryan on 0800 955 5247

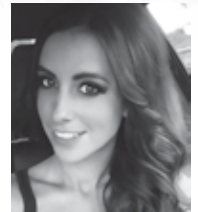


3 MONTHS FREE MANAGEMENT!

Are you unhappy with your current agent?

Not receiving a good service?

The above offer is for a limited time only for any new landlords that register within the 4 weeks from the date of this advert and wish to switch to Courtyard.



Sam
Lettings Manager

WE WILL TAKE CARE OF THE HANDOVER WITH NO SET UP COSTS FOR FREE!

STRESS FREE - NO HASSLE- PROVEN TRACK RECORD, IT ONLY TAKES ONE CALL AND WE WILL DO THE REST

Myself and the team at Courtyard are here to help

Terms and Conditions apply.

Courtyard
ESTATE AGENTS
www.courtyardhomes.co.uk

T: 01925 767000 E: ask@courtyardhomes.co.uk

15 Jackson Avenue, Culcheth, Warrington WA3 4EJ



www.facebook.com/courtyardestateagents/



[@courtyardhomes1](https://twitter.com/courtyardhomes1)

Call us for a free, no obligation valuation and marketing advice

Recommended Karndean Retailer



Karndean
Design flooring



Courtyard
Carpets

The Old Telephone Exchange, Common Lane,
Culcheth, WA3 4HA

Tel: 01925 555 820