

**Lymm**

# Life

**FREE EVERY MONTH**

**February 2016**

**Issue: 203**



**urban**

BUILDING PROJECTS LTD

**Extension &  
Building Renovation  
Specialists**

**Tel: 01925 730888**

[www.urbanbuildingprojects.co.uk](http://www.urbanbuildingprojects.co.uk)



**Brazilyymm '66**

**Page 6**

**Banner** & Co

Independent Residential Sales  
and Letting Agent

See our main advert  
on the back page  
for details

**01925 753636**



**LYMM  
PARISH  
COUNCIL**

Approved by Lymm Parish  
Council as the official  
magazine for Lymm

**eden**

RESIN BOUND SPECIALIST



[www.eden-resin.co.uk](http://www.eden-resin.co.uk)

**01925 263125**

**Regular news updates at [www.lymmmlife.co.uk](http://www.lymmmlife.co.uk)**

# Editor's Comment



**Editor**  
Gary Skentelbery

**Production**  
Paul Walker

**Advertising**  
James Balme  
Freephone  
0800 955 5247

**Editorial**  
01925 623633

**Email**  
info@lymmlife.co.uk

**Websites**  
www.lymmlife.co.uk  
www.culchethlife.com  
www.frodshamlife.co.uk  
www.warrington-worldwide.co.uk  
www.warrington.tv

**Address**  
New Media Centre  
Old Road Warrington  
WA4 1AT

*Lymm Life is published monthly by Orbit News Ltd. The contents of this magazine are fully protected by copyright and nothing may be reprinted or reproduced without prior permission of the publishers. The publishers are not liable for any statement made or opinion expressed by third parties in this publication. Printed by TwentyFourSeven*

**IT would appear that the boundary commission's proposal to split Lymm village in two and bring Thewall and Grappenhall into the one half of the village has been signed sealed and delivered - without any thought for local opinion - so much for democracy!**

Local politicians, who are elected to represent local people, are quite rightly outraged by the decision.

Despite a lot of opposition the proposals are going to go through, unless there is a highly unlikely knock back at parliament.

There has never been a case of the the boundary commission's proposals being over turned in Parliament, so we are now going to have to get used to the idea.

How on earth the boundary commission can see a benefit for local democracy by "merging, Grappenhall and Thewall with part of Lymm defies all logic.

With Lymm Life having a sister publication, Village life, covering Thewall and Grappenhall, it was quite clear to us where the local boundaries are - so why can't the boundary commission see this?

I just can't see how a Lymm based councillor can represent someone living in Grappenhall efficiently.

Warrington South MP David Mowat is aware of local concerns and has already raised them in parliament and is calling for a review.

But with the weight of history stacked against him I won't be holding my breath.

Whatever the outcome, here at Lymm Life, we will continue to report on issues local to Lymm, while our sister publication Village Life, will continue to report on local issues in Thewall and Grappenhall.

**Deadline for the March issue of Lymm Life is February 2**

## N & J STANHOPE

### Coal and Log Supplies

Best Quality Coal  
Smokeless Fuel  
Logs Supplied in Bags and Bulk  
Fresh Bacon and Eggs  
**Open 7 Days**

Broomeage Farm  
Burford Lane, Lymm WA13 0SE  
**Tel/Fax: 752830**

**Are you struggling to cope?**

**CHESHIRE Natural Health**

We offer caring and professional counselling services with highly qualified and experienced therapists

Rosemary Dossett MA (counselling), UKCP reg.  
Karen Anderson HEDip (Therapeutic counselling), MBACP  
Paula Cornes Dip (counselling) MBACP

Please call to find out more  
**Tel: 01925 730123**

www.cheshirenaturalhealth.co.uk  
Cheshire Natural Health, Beehive House, Tarporley Road, Stretton, Warrington



# KEATE HOUSE CARE HOME

Quality person-centred care for your elderly loved one

Keate House is an independent family-run Care Home, specialising in providing Residential, Dementia, Respite and Day Care services for the elderly. Situated in the beautiful village of Lymm, our lovely purpose designed home is supported by our compassionate team, dedicated to providing only the best in quality person-centred care in our happy, stimulating and homely environment.

- Residential Care
- Dementia Care
- Respite Care
- Day Care

To talk to one of our Care Managers or to arrange a visit, call: 01925 752091 Brookfield Road, Lymm, Cheshire WA13 0QL  
Email: info@keatehouse.com Web: www.keatehouse.com

*Enriching life with quality care*



# Ex-Lymm schoolboy tackles 'world's last great adventure'

**A FORMER Lymm schoolboy is to take part in a gruelling 500 mile race which has been dubbed "the world's last great adventure."**

Ben Hill, who was brought up in Lymm and attended Lymm High School, will take part in the Patagonian Expedition Race this month as a member of The Green Sentinels, a UK-based international adventure team largely made up of serving or former British Army soldiers.

Twenty four-person teams will take part in the race and raise money and support for good causes.

Ben has always been a keen sportsman. He represented Lymm High School in rowing and cross country and competed for Manchester in water polo.

He joined the Army at 18 and was posted to Germany with 64 Fuel Sqn Royal Logistics Corps where he continued to compete in cross country and Alpine skiing.

His love of a challenge led him to complete his Physical Training Instructor and the All Arms Commando course prior to trialling for a joint service Antarctica "Spirit of Scott" Expedition.

Ben has served in the Falklands and has undertaken several international exercises and expeditions, including Kenya, Spain, and Germany, where he continued his interest in high

altitude trekking, climbing and Nordic Skiing.

He now lives near Exmoor, where he regularly mountain bikes, climbs, and runs - but he is still a serving soldier, currently posted to a Commando Logistic Regiment.

Ben said: "We're doing the event to support numerous charities one of which is close to our heart called ShelterBox which highlights the plight of injured service personnel. Whether physical injury or PTSD. The charity's aim is to aid the recovery of both civilians and veterans through outdoor activities and adventure training. Along side of this we're supporting Help

for Hero's and the Royal Marsden cancer charity."

Each four-person team will cross over 500 miles in just 10 days through the untouched wilderness of Patagonia.

Teams will mountaineer, mountain bike, and sea kayak their way across various terrains, and through harsh conditions, stopping only to re-set their compass.

The team is being supported by famous explorer Sir Ranulph Fiennes who said: "The Green Sentinels is a brave and courageous cause that will positively change the lives of suffering ex-servicemen and their loved ones in a truly inspiring way".



**We Clean Ovens ...so you don't have to!**

Call us today to leave your cooking appliances sparkling, using our eco friendly products.

**oven**  
oven valeting service

Local | National | Affordable

Our oven cleaning experts will leave you free to enjoy your valuable leisure time.

Call for LOCAL service

**01925 453377** [oven.co.uk](http://oven.co.uk)

*Sophies Soft Furnishings*

Curtains • Roman Blinds  
Cushions • Tiebacks • Poles  
Tracks • Valances • Pelmetts

We design, make and fit to meet your exact requirements.

For free home visit or advice ring **Anne on 01925 754446**

[www.sophiessofffurnishings.co.uk](http://www.sophiessofffurnishings.co.uk)

**The Premier Wood Furniture Specialists**

**BRAND NEW**  
Wentworth Bedroom  
Ivory Painted with Rustic Pine Top  
(Dining & occasional range also available)

Exceptional Choice  
Stylish & Contemporary  
Outstanding Service

**sale NOW ON!**  
FANTASTIC SAVINGS ON ALL RANGES

**branches**  
The home of beautiful wood furniture

Wilderspool Causeway,  
Warrington WA4 6QP  
Open: Mon to Sat 9am-5.30pm,  
Sun 11am-4pm  
**Tel: 01925 241869**

Shop online: [www.branchesfurniturewarrington.co.uk](http://www.branchesfurniturewarrington.co.uk)

**orb jewellery**  
The Grove, Lymm  
(next to post office)

**Happy Valentines**

*Spoil yourself or someone special this Valentine with a beautiful piece of jewellery...*

01925 759492  
[www.orbjewellery.co.uk](http://www.orbjewellery.co.uk)

Tue - Fri 9.30 am - 5 pm  
Sat 9.30 am - 4 pm

# What's On

in conjunction with Lymm Parish Council



**February 8th**  
**LYMM HISTORY SOCIETY**  
 Cheshire's Ancient Mariner - Tony Bostock  
 Visitors always welcome  
 More info Lynne Smith 01925 756776

**February 9th**  
**LYMM PARISH COUNCIL**  
 Lymm Parish Hall 7.30pm

**LYMM THURSDAY EVENING BRIDGE CLUB**  
 Lymm Village Hall every Thursday 7pm

**MAPLE LODGE ART GROUP**  
 Meet each Wednesday 9.30am - 12.30pm  
 Oughtrington Community Centre, Lymm  
 Details: 01925 755126

**ROTARY CLUB OF LYMM**  
 Every Wednesday at Statham Lodge Hotel  
 7.15pm for 7.30pm  
 Contact the secretary 01925 650189

**LOVING HEARTS & HANDS**  
 Knitting for charity at Lymm Methodist Church,  
 2nd and 4th Thursday each month,  
 1.30pm - 3pm. Details: 01925 753298

**MARKET LUNCHEAS**  
 Eagle Brow Methodist Church  
 3rd Thursday in the month  
 Light lunches 12 noon till 2pm. All proceeds to  
 Youth For Christ and YMCA Room at The Inn

**LYMM SCOTTISH COUNTRY DANCE CLUB**  
 St Mary's Church Hall  
 Second and fourth Fridays (Sept - May)  
 7.30pm. Details: 753853

**GARDENING CLUB**  
 Meet Third Wednesday of the month  
 Lymm Baptist Church, Higher Lane. 7.30pm  
 Visitors welcome. £2 includes tea and cake

**LYMM FLORAL ART GROUP**  
 Lymm Village Hall  
 Third Monday of the month (except August)  
 at 7.30pm

**LYMM ORNITHOLOGY GROUP**  
 Lymm Village Hall, 7.45pm for 8pm,  
 Last Friday in the month (ex June & July).  
 Guest speaker, Slide Show, Refreshments.  
 Visitors welcome. First visit FREE.  
 Also field trips. Details: lymmog.co.uk

**LYMM PHOTOGRAPHIC SOCIETY**  
 Every 2nd and 4th Wednesday  
 (ex July & Aug), 7.30pm  
 Spread Eagle pub, Eagle Brow.  
 Details: www.lymmphotosoc.org.uk

**LYMM WINE AND BEER CIRCLE**  
 3rd Wednesday of the month, 8pm  
 The Spread Eagle Hotel  
 Details: 01925 604400

**LYMM CONCERT BAND**  
 Rehearsals every Thursday evening  
 United Reformed Church, 8pm.  
 Details: 01925 752934

**THE VENUE, LYMM**  
 Chess Club every Monday from 6pm,  
 Open Mic Night every Tuesday from 9pm,  
 free chinese meal and 2-1 cocktails  
 every Wednesday, Live Music every  
 Thursday and Saturday

**LYMM WI**  
 Every second Wednesday, 2-4pm at Lymm  
 Youth and Community Centre. Visitors  
 welcome.

**LYMM BOOK CLUB**  
 Second Thursday of the month 7.30pm,  
 Spread Eagle, Eagle Brow. Details 01925  
 752371

**LOW CARBON LYMM**  
 Every second Monday of the month. 7.30pm,  
 Spread Eagle. 07786 074741 all welcome

**4LYMM VOLUNTARY ORGANISATION**  
 Meet every 2nd Monday at 7.30pm in the  
 Bridgewater Club, Whitbarrow Road.  
 All welcome. Tel 01925 756378 for details.

To feature your event on this page  
 please call our team on  
 01925 631592



**LYMM PARISH COUNCIL**

Next meeting is  
 Tuesday, February 9th  
 Lymm Parish Hall 7.30pm

# Charity jazz concert

**THE annual charity concert in aid of the Lymm and Thelwall group of the charity Contact the Elderly will again feature the Chicago Teddy Bears Society Jazz Band and will be at Grappenhall Community Centre on Friday, February 12.**

As usual, it will be the main fund-raising event of the year for the group. The £13 admission charge includes a two-course supper.

The band's line-up is likely to be John Hallam (saxes and clarinet), Jim Lucas (trumpet), Andrew Mackenzie (trombone), Tony Ormisher (guitar and banjo), Ray Owens (bass and vocals) and Brian

Singleton (drums). But there may be a guest artist.

Contact the Elderly offer help through a network of volunteers, to lonely people, aged 75 of over, who live alone, with regular tea parties and other outings.

Tickets for the show are available from Colin Melrose on 01925 756742.

## For those in need of prayer

A SPECIAL letter box has been provided outside the church hall at Lymm Methodist Church, in Eagle Brow, where prayer requests can be dropped in. Lymm Methodist Prayer Team exists to pray for anyone in need in the church and provision of the new letter box enables them to extend this to all in the neighbourhood who would like to be prayed for.

Anyone can drop a note in the box giving details of those who are wanting prayer.

## House extension plan withdrawn

PROPOSALS for extensions at a house in Elm Tree Road, Lymm, including office space over an existing garage, have been withdrawn by the applicant before being considered by borough planners.

The proposed development had involved a single storey pitched roof extension connecting the existing house to the garage and a single storey mono pitched roof extension to the front of the property continuing in line with the existing porch.

A new pitched roof was proposed for the garage, with two pitched roof dormers at the rear to accommodate a new office space. The ground floor would be retained for car parking.

In 2016 we will be celebrating our  
 25th year of providing child care  
 and education in Lymm



We are delighted that our recent Ofsted inspection at  
 The Rosebank Centre said we are **outstanding**.

- "Leaders are inspirational"
- "Children make excellent progress"
- "Staff know children very well"
- "Children are extremely well supported by staff"

The Rosebank Centre, 3 months to 3 years 01925 756900

Rosebank Naturegarten, 2 to 11 years 01925 758959

[www.therosebankcentre.co.uk](http://www.therosebankcentre.co.uk)

High quality care at  
 reasonable prices

**Grappenhall**  
 DENTAL PRACTICE

Independent private practice

Private dentistry at NHS prices (conditions apply)

Now taking new clients due to  
 expansion after 9 successful years.

Easy parking/ground floor easy access  
 including wheelchair

State of the art equipment / highest standards  
 of cleanliness / cross infection control

Emergencies seen same day / no waiting lists  
 Late night opening Tuesdays until 8pm

Dr Andrew Brown and associates welcome new patients

Tel: 01925 210977 or 01925 481341  
 148 Knutsford Road, Grappenhall, Warrington WA4 2PW  
[grappenhalldentalpractice@virginmedia.com](mailto:grappenhalldentalpractice@virginmedia.com)  
[www.dentistswarrington.co.uk](http://www.dentistswarrington.co.uk)



## Thelwall Upholstery

**FOR THE MOST COMPETITIVE RATES IN THE AREA**

49 Knutsford Road, Grappenhall WA4 2NR

Call Sean on: 01925 604770 or mobile: 07799 228080  
[www.upholsterywarrington.co.uk](http://www.upholsterywarrington.co.uk)

For all your upholstery needs

**SPECIALISTS IN:**

- Re-filling Cushions • Re-springing • Full Re-upholster
- Dining Furniture • Headboards

A wide range of sample books to choose from  
 All at competitive rates

PHONE FOR YOUR FREE ESTIMATES





# Divorce Finances Settlements

"If anyone needs legal advice I doubt they could do better than using this excellent law firm."

"My first meeting with Caroline put me at ease, I was distressed and anxious but when she fully explained the process ahead of me I knew Caroline would guide me through this difficult time."

"Pleasant, thorough, determined and diligent throughout."

"Highly recommended!!!"

Various finance  
options available

Private appointments from  
8am - 9pm  
weekdays  
and  
9am - 12 noon  
Saturday mornings

**BPS** LAW  
LLP

[www.bpslaw.co.uk](http://www.bpslaw.co.uk)

17 Cecil Road  
Progress House, Hale  
Altrincham, Cheshire  
WA15 9NZ  
Tel: 0161 926 1430  
Manchester City Centre  
Cardinal House  
20 St Mary's Parsonage  
Manchester, M3 2LY  
Tel: 0161 834 2623

# Word spreads about Brazilymm '66

Pictures: Eddie Whitham

**MOMENTUM is building for a unique event in Lymm to mark the 50th anniversary of the Brazil football team's stay at the Lymm Hotel in 1966.**

As well as a great gallery of rarely seen images and an amazing collection of 1966 World Cup memorabilia there will be a 60s themed buffet with a Brazilian twist provided by the hosts and sponsors The Lymm Hotel.

"The interest in this event just grows and grows" explained Alan Williams who is organising the event on behalf of Lymm Heritage Centre, with "more and more material coming forward".



Alan added: "Retired local press photographer Eddie Whitham has given us some great images and we have a local barber who cut the team's hair coming over with his picture collection. There are even plans for a local samba band to add to the atmosphere. Kari Allen who is the daughter of then hotel manager and well known personality Roger Allen, is making the trip up specially from Essex to be at the opening."

She added: "My father would be immensely proud at the thought of the anniversary being marked in this way. A big thank you to Lymm Heritage Centre for making it happen."

The exhibition from Feb 21-24 kicks off with a ticketed Gala opening on Feb 21 at 6pm. Tickets cost £12.50 from the hotel, Lymm Electric or via the website [www.lymmhlc.co.uk](http://www.lymmhlc.co.uk)

All profits go towards the setting up of Lymm Heritage Centre which recently achieved registered charity status and then continues during the day from Feb 22-24 to allow school groups and the general public to visit.

*(Right) BBC commentator Kenneth Wolstenholme (they think it's all over... it is now ...fame) interviewing a young Pele, who is also pictured boarding the team bus.*



*"Students are very positive about their experiences in sixth form and feel both supported and challenged." Ofsted*



**Lymm High School**

Lymm High School, Oughtrington Lane  
Lymm, Cheshire, WA13 0RB  
Tel: 01925 755458 Email: [info@lymmhigh.org.uk](mailto:info@lymmhigh.org.uk)  
[www.lymmhigh.org.uk](http://www.lymmhigh.org.uk)



## Boost for resident's fund

KEATE House held a Christmas Fair and managed to raise a "whopping" £400 for the resident fund.

The event included a raffle, secret tombola and photo booth and they had a great turn out.



# ARROW Lettings

Attention Landlords:  
Strong demand for quality local property!

Highly competitive rates and zero VAT  
100% record for rent collection  
24hr / 7days a week availability  
Residential and Commercial Lettings

Lymm 01925 759192 / 07809 876812

## Meet your MP David Mowat

David Mowat, MP for Warrington South, holds regular surgeries throughout the constituency. If you would like to arrange an appointment to discuss an issue of concern to you please

e-mail him at [david.mowat.mp@parliament.uk](mailto:david.mowat.mp@parliament.uk) or telephone 01925 231267.



**David Mowat**

Member of Parliament for Warrington South  
[www.davidmowat.org](http://www.davidmowat.org)

Produced by David Mowat MP, House of Commons, London SW1A 0AA

# Celebrate the New Year with a Quality Kitchen Makeover

Order This Month and Pay No Vat!

With a quality Dream Doors facelift you can save £1000's, and it will only take a few days to install.

Save Time and Money with Less Disruption!

- Trusted reputation
- Large choice of doors, worktops, appliances and accessories
- 50% deposit balance on completion



\*Terms & Conditions apply, please ask for full details

Call now for a Free Design quotation 01925 211308

# DREAM DOORS®

NEW LIFE FOR OLD KITCHENS

Visit our Showroom: 92 Knutsford Road, Grappenhall, Warrington WA4 2PJ  
[www.dreamdoors.co.uk](http://www.dreamdoors.co.uk)

Over 130 Reviews on



## Less is More!

- Get paid quicker – Improving your cash flow
- Less time spent sorting old receipts – Free up countless hours each week.
- Less jargon and more proactive advice – Watch your business flourish.

*Don't let these issues hold your business back.*

To find out how we can remove your financial headaches call us:

**01925 761600**

or visit us at:

[www.stylesandco.co.uk](http://www.stylesandco.co.uk)

**styles** and co  
chartered accountants



# Water water everywhere and not a drop to drink!

**AS flood waters caused by heavy rain affected some areas of Lymm, hundreds of homes were without water as a result of a burst main near Massey Brook Lane.**

Areas of Lymm and Thelwall were badly affected by flood waters during the festive period which can be clearly seen from these

spectacular aerial photographs taken by local resident David Fox.

The flooding covered local sports fields, farm land and yards, with

one motorist having to be rescued by fire crews after becoming trapped in flood waters at Lymm Golf Club on Whitbarrow Road.

David who runs Flying Fox Films Aerial Photography captured the spectacular images on video film using a drone.



**simplesolutions**  
Financial Management Ltd  
INVESTMENTS & PENSIONS

### INVESTMENTS

Our investment expertise will ensure that you have the most suitable investment to help you achieve your financial goals.

We use:

- Asset Allocation • Risk Profiling • Diversification • Correlation

### PENSIONS

Pensions are changing due to the March 2014 budget and you now have a lot more options to consider

#### TECHNOLOGY

Simple Solutions uses the latest technology to keep you updated, even when you are on the move or abroad, check out our website for more details.



1st Floor, 67 London Road  
Stockton Heath, Warrington  
WA4 6SG

Tel: 01925 266628 Fax: 01925 267043

[www.simplesolutions.financial](http://www.simplesolutions.financial) @SimpSolsIFA

Simple Solutions Financial Management Ltd is authorised & regulated by the FCA. The registered office is 1st Floor, 67 London Road Stockton Heath, Warrington WA4 6SG. Registered in England & Wales. The company Re No 6920858.





## Singers raise £190 for MacMillan nurses

**LYMM based singers "Serenade" raised £190 for the MacMillan charity by singing carols around Lymm on Dickensian Day.**

Despite the heavy rain, everyone was extremely generous.

## WI members look forward

MEMBERS of Lymm WI are looking forward to a varied and interesting programme in 2016 after starting the New Year with a chocolate theme.

They rounded off last year's programme with a social afternoon.

After the usual formalities and announcements festive poems and readings appropriate for the season were recited.

A game of "stand up" bingo was played followed by mince pies and a Christmas quiz.



Commercial  
Commercial Property  
Litigation  
Employment  
Wills  
Trusts  
Probate  
Personal Injury  
Conveyancing  
Crime  
Family & Divorce

**01925 231000**

**info@fdrlaw.co.uk**

Warrington  
Stockton Heath  
Frodsham

[www.fdrlaw.co.uk](http://www.fdrlaw.co.uk)



Celebrating our 15 year anniversary

With the NEW next125 range of kitchens!

**JD Kitchens**

- ✓ Luxury German & UK Kitchens
- ✓ Family Business
- ✓ Est 2001
- ✓ Backed by KBSA Consumer Protection Scheme

**Visit us at:**  
4 Gorse Lane,  
Warrington  
WA1 3PU

01925 636997

www.jdkitchens.co.uk | sales@jdkitchens.co.uk

## Colony BUSINESS

Success in numbers

Networking events, support and training workshops for business owners

at The Lymm Hotel (WA13 9AQ)

21 Jan Speed Networking

25 Feb Goal Re-Setting for Your Personality

24 Mar Networking Central

21 Apr Social Media Essentials

[www.colonynetworking.co.uk](http://www.colonynetworking.co.uk)

## Colony COMMUNITY

Success in numbers

Information, workshops and events for the community

at Cherry Tree Primary (WA13 0NX)

7.30pm, Thursday 11th February

Think Family Internet Safety

Further events to include:

Allergies, Disabilities, Female Health & more

Book at:

[www.colonynetworking.co.uk/events](http://www.colonynetworking.co.uk/events)

**0844 504 6627**

[kirsty@colonynetworking.co.uk](mailto:kirsty@colonynetworking.co.uk)

f Colony Networking  
@colonynetwork

[www.colonynetworking.co.uk](http://www.colonynetworking.co.uk)

# Colony Community shares eSafety advice with families

**FOLLOWING a successful launch last year Lymm based Colony Community will kick start the New Year with a special event focusing on internet safety and social media guidance for families.**

The Internet is a fantastic resource, crucial to developing core skills, but with terms such as cyberbullying, sexting, paedophilia, grooming, trolling and safeguarding so frequently bandied about in the media, how can parents keep up?

Undoubtedly, without accurate information, education and management of the technology around us, and an understanding of the myriad of support organisations and campaigns available, the internet and social media usage has the capacity to present both physical and psychological dangers.

Following on from the successful launch which focused on family health and finances, Colony Community, part of the Colony Networking Group, will bring local experts to local people during its third event, Think Family eSafety, on Thursday 11th February.

During the evening, a panel of speakers – including experts from the private, public and charity sectors – will discuss many of the challenges, dilemmas and practical issues we face on a wide range of eSafety topics. Plus, there will be spotlight introductions, literature and offers from other sources to

enhance the variety of knowledge and benefits provided.

Kirsty James, owner of Colony Community, said: "From a young age, our children are plugged into an online world through a range of electronic devices. Many of us feel overwhelmed by this ever-changing technology and, perhaps, this makes us blinkered to what our kids are really doing. Sometimes our kids are so tech-savvy, and know more than we do, that we just assume they'll be fine."

"Think Family eSafety has been designed to help parents, guardians and carers to take an interest in the subject and learn about the potential dangers facing children and young people. The Internet and social media won't go away and the Government and schools can't cover it all so, as parents, it will fall to us to learn how we can better protect our children."

Colony Community provides information for local families from local businesses and organisations and kicks back profits to local charities and causes. Local causes, relevant to eSafety, including the NSPCC's Warrington Schools Service, will benefit from the Think Family eSafety event profits.

In December, the Colony Networking Group presented over £500 in fundraising donations to three Warrington charities.

Its Charity of the Year for 2015, Lymm-based national charity STEPS, benefitted from Colony's monthly business events. Further donations were made to Warrington Foodbank from the Think Family Health event in June and to Home-Start Warrington from the Think Family Finance event in November.

For 2016, Warrington Disability Partnership has been chosen as Colony's beneficiary Charity of the Year for business events. This coincides with WDP's 25th anniversary year. Further charities will be selected for each Community event and will relate to the specific subject matter being tackled.

Think Family eSafety will take place from 7.30pm to 10.30pm on Thursday, February 11 at Cherry Tree Primary School in Lymm. The event is open to all members of the community, not just school parents. Drinks available from the school PTA bar. Tickets from £10\* with profits to charity and a donation to the hosting school PTA.

\*Advance tickets £10. Door £15. Tickets available from [www.colonynetworking.co.uk/events](http://www.colonynetworking.co.uk/events).

For more information, contact Kirsty James on 0844 504 6627, email [kirsty@colonynetworking.co.uk](mailto:kirsty@colonynetworking.co.uk), or connect on Facebook or Twitter.

Colony Community is the community events division of The Colony Networking Group, Lymm's only pay-as-you-go, non-membership based, business networking group.

## THE LYMM HOTEL



THE LYMM HOTEL IS SET IN A ROMANTIC AND PEACEFUL SETTING – IDEAL FOR YOUR WEDDING CELEBRATIONS.

### WEDDING FAYRE

SUNDAY 28TH FEBRUARY 2016, 12 NOON UNTIL 4PM



**Brazillymm '66**  
FEBRUARY 21ST - 24TH

A unique event marking the 50th Anniversary of Pele and Brazil's stay at the hotel for 1966 World Cup

Gala Opening Event Feb 21st 6pm -  
Exhibition, Music, Guests, Food, Welcome Drink

**Tickets £12.50 Children £3**  
in Support of Lymm Heritage Centre

For further information, please call  
0344 879 9047 or email  
[general.lymm@macdonald-hotels.co.uk](mailto:general.lymm@macdonald-hotels.co.uk)

Whitbarrow Road, Lymm, Warrington, Cheshire, WA13 9AQ  
\*Terms and conditions: Children prices apply for under 7 years of age.




[WWW.MACDONALDHOTELS.CO.UK/LYMM](http://WWW.MACDONALDHOTELS.CO.UK/LYMM)



(L-R) Kate Griffiths, from Home-Start Warrington; David McDonald, from Warrington Foodbank; Tom Coleridge, from Warrington Disability Partnership; Claire Wormald, from STEPS; and Kirsty James, owner of the Colony Networking Group.

## New house for old plan approved

PLANNING chiefs have cleared the way for a detached house in Grammar School Road, Lymm to be demolished and replaced by a new house.

The house changed hands in October last year when it was sold for £825,000.

An application for planning permission for it to be demolished and replaced with a two-storey house with single-storey annexe accommodation and a detached garage has been considered by planning officers at Warrington Borough Council, under delegated powers, and was approved.

# The BIG PROBLEM WITH Conservatories...

OUR BEST EVER SALE IS ON NOW!

# sale



**Too COLD  
in Winter**



**Too HOT  
in Summer**



Also  Irritating rain noise?  Sun glare on TV screen?  Faded furnishings?



**ONE SOLUTION FIXES ALL THESE PROBLEMS!**

## A Conservatory Roof Conversion

Turn your conservatory into a warm, comfortable room you can use all year round with a new high insulation conservatory roof conversion from Your Choice. With four different solutions on offer, Your Choice can dramatically improve the living experience in **YOUR** conservatory!

**4 SEASONS**  
CONSERVATORY ROOFS

**4 OPTIONS TO SUIT ALL CONSERVATORIES AND ALL BUDGETS!**



**eco**hybrid



**THERMOTEC**  
ROOFING FITTERS LIMITED



**eco**THERM

**NATIONWIDE SERVICE**

...as seen on TV!  
**your CHOICE**  
your home your choice

**EXPERT ADVICE - CALL NOW!**

**0161 643 7222**

www.your-choice.uk.com

OPEN 7 DAYS A WEEK



SHOWROOM OPEN 7 DAYS A WEEK  
Mon-Fri 9am-5pm, Sat & Sun 10am-2pm  
The Energy Centre, 590 Manchester Old Rd,  
Middleton, Manchester M24 4PW



SHOWROOM OPEN 7 DAYS A WEEK  
**THE ENERGY CENTRE**

**FREE** Infra Red conservatory heater with all orders\*  
super efficient & very cheap to run!

Prices From  
**£995**  
inc fitting

- Cool in the summer
- Warm in winter
- Reduces rain noise
- Cuts sun glare
- Spend less on heating
- Non-disruptive installation
- Suits ALL conservatories
- **EASY WAYS TO PAY!**

\*while stocks last!

\*Written details on record. Authorised and regulated by the Financial Conduct Authority

**Also:** • Windows & Doors • Conservatories & Orangeries • Rooflines • Solar Panels • Infrared Heating • Flat Roofs • Extensions • Garage Conversions • Refurbishments • and all building work

# Boundary proposals 'plain stupid'

**THE Local Government Boundaries Commission has been accused of misleading local political parties in the run-up to its controversial recommendations which include splitting Lymm into two halves - one of which would include Thelwall.**

Lymm councillor Ian Marks, who is also chairman of Warrington Liberal Democrats, has written to Warrington South MP David Mowat asking him to take what he believes may be the unprecedented step of objecting to the proposals.

Cllr Marks has also written to the Boundaries Commission informing them about the local anger over the proposals.

He stresses that although he has written on behalf of the Liberal Democrats, his views are shared by many in other political parties and by people without any party affiliations.

He says: "We are extremely disappointed with the final recommendations of your

Commission for Warrington and the process that led up to these proposals."

Under the proposals, Lymm will be split into two halves, with one half taking in Thelwall and part of Grappenhall.

There will also be major changes to other boundaries south of the Manchester Ship Canal, with Appleton Thorn "moved" from Appleton into Grappenhall and the villages of Hatton, Stretton and Walton disappearing from the electoral map.

The recommendations have still to be approved by Parliament - although this is usually little more than a formality.

Cllr Marks said he and other local councillors had been "misled" at briefings held by the Commission in 2014 with the result that Warrington Borough Council, with all-party support, put forward proposals they would not have otherwise suggested.

In addition, the Commission gave the impression that each of three criteria - electoral equality, community identity and effective local government - was of equal standing when determining ward boundaries.

"This is blatantly not the case and electoral equality swamps the other two. We feel we were misled on this as well."

Cllr Marks questions whether the people who carried out the review ever visited Warrington.

Local people believed the review was carried out by "faceless bureaucrats" surrounded by maps and tables in London, he said.

Consultation was "a farce" and turned out to be a pointless exercise because no notice was taken of any of the comments made by local people.

Cllr Marks tells the Commission:

"By breaking the links between borough wards and parishes we contend you have worsened 'effective and convenient local government' rather than improved it. We would appreciate your view on why you think you have improved the situation?"

The Commission's other proposals for South Warrington were "plain stupid, lacking in common sense and an insult to the electorate" he adds.



## 4Lymm group raise £2,500 in first year

LAST year saw the first whole calendar year of the existence of 4Lymm after leaving Lions International - and in their first year, they raised over £2500.

So far they have donated almost £1500 to organisations including Oughtrington Luncheon Club, Warrington 4th & 18th Scouts, GenDai Martial Arts, The Brainwave Centre and Riding for the Disabled.

They also made their annual Youth Awards to two young people who provided support and acted as good role-models for their peers.

In November they went door-to-door on their annual tinning appeal and distributed 130 food parcels

and 27 boxes of chocolates in the Lymm area.

Some surplus food parcels were donated to Warrington Open Doors at Christmas. They would like to thank all the Lymm residents who contributed so generously.

This year they hope to, amongst other things, hold a quiz night (maybe two), run a stall on the May Queen field, provide high-tea at High Legh community centre one Sunday afternoon and, of course, sell mulled wine on Dickensian Day.

4Lymm are always on the lookout for new members, and meet in the Bridgewater Club.



## Winter warmers for all the family

CHRISTMAS and New Year festivities may be over, but Lymm Festival has a choice of four Winter Warmers to choose from.

Rebecca Downes and her band will be performing at the Lymm Golf Club on Friday, February 5, with an evening of music and enjoyment, starting at 8.15pm.

Doors open at 7.45pm and tickets are only £11 each.

Firmly established as one of the star attractions amongst the new vanguard of blues performers in the UK, Rebecca's unique and powerful voice draws influences from Blues and Soul to Jazz and Rock. Described as "5ft 2" in her high heels, but a pocket powerhouse with a voice that makes Janis Joplin sound like a choir girl", Rebecca has recently produced an album in collaboration with Steve Birkett. This collection of songs includes the rockabilly shuffle of "Basement", "Fever in the Night" and "When I'm Bad", plus nine other great songs.

Rebecca is currently being booked for a series of shows in LA, has performed in New York and Fireworks magazine described her

as "Musically brilliant and vocally stunning - all from a young singer who one suspects could potentially be touching upon legend."

Meanwhile families are invited to watch one of two "Pop-Up Films" at the United Reformed Church on Brookfield Road on Thursday, February 18 at 5.00pm.

Tickets for The Good Dinosaur are selling fast, so don't disappoint the little ones and book now.

Tickets for this PG performance cost £4 and the doors open at 4.30pm finishing at 6.40pm. Snacks and drinks are available at the Sanctuary Cafe but please don't bring them into the church.

The evening film is "Suffragette", showing at 8pm until 9.45pm, again at the United Reformed Church and costs £7.

Finally the winners of the 2014 BBC Radio 2 Horizon Award and the 2013 BBC Radio 2 Young Folk Award, Greg Russell and Ciaran Algar will perform at Lymm Golf Club on Friday, March 4 at 8.00 pm tickets £11.

Tickets for all events are available online at [www.lymmfestival.org.uk](http://www.lymmfestival.org.uk) or from Lymm Electric.



# COPPER BEECHES

*West Lane, High Legh*



AVAILABLE SPRING 2016

*A bespoke development of just  
10 luxury 4 bedroom homes*

Reserve and spec your new home now  
For more information contact

*01925 758345 or 01565 757000*

*Brought to you by*



# Lymm Heritage Centre announces Terry Waite as new Patron

**The Heritage Centre project took another step forward with the announcement of Terry Waite CBE as its patron.**

Former Lymm resident Terry was the Assistant for Anglican Communion Affairs for the then Archbishop of Canterbury, Robert Runcie, in the 1980s. As an envoy for the Church of England, he travelled to Lebanon to try to secure the release of four hostages, including the journalist John McCarthy. He was himself kidnapped and held captive from 1987 to 1991.

He is president of the charity Y Care International (the YMCA's international development and relief agency) and patron of AbleChildAfrica.

When approached Terry immediately responded enthusiastically to the invitation.

He told Lymm Life "I am delighted to give my support to the Lymm Heritage Centre. Lymm has been the home for my family for over 60 years and although I no longer live in the village my sister continues to live there and takes an active part in the life of the community.

"Archbishop Robert Runcie, for whom I used to work said, 'Nothing is real unless it is local'. A village that take its heritage seriously is in a strong position to build a lively community. I hope to be able to assist Lymm in that endeavour."

Heritage Group chair Alan Williams added: "Terry Waite is the ideal choice for patron and we are delighted that he has accepted our invitation. His sentiments about

engaging with heritage to the wider benefit of the community exactly match our own thinking. His guidance and support will, I'm sure, be invaluable."

The group also recently received recognition from the Charity Commission as a registered charity and has been accepted as a member of the Association of Independent Museums. They are now waiting on news of the planning application submitted by the new owner of the former British Legion, Howard Platt which could transform the Legh St building into a modern showpiece site.

The group will shortly be holding their first major fundraising Event Brazilymm '66 at the Lymm hotel from Feb 21-24 at which they will be also hope to launch their "Friends and Supporters" appeal.



## Lymm Hockey Club celebrating 10 years of success

LYMM Hockey Club is celebrating a special anniversary after 10 years involving 1160 games played, 4381 goals scored, 783 games won, 18 league titles, 67.5% victory ratio, 310 members and one shout out on TV!

These statistics may sound like those belonging to a well established club, but in fact they belong to Lymm Hockey Club who are only just celebrating their 10th Anniversary.

Competing with long established local clubs with generations of experience and support, Lymm Hockey Club is probably the fastest growing club in the North West today. In its inaugural year the 'club' managed to just about raise one mens team (some of whom had to be instructed which way up to hold the stick!). Little did they realise what they had started. From these humble beginnings the club went from strength to strength and a ladies team soon followed. Now the ladies outnumber the men with 5 senior ladies teams and 4 senior mens teams, as well as numerous junior teams for both girls and boys.

The Ladies 1st team have been promoted out of the Cheshire leagues and now play in the Northern league competing against clubs from east to west and as far afield as Newcastle. This progression has seen a number of high level players being attracted to Lymm Hockey Club. Alongside the development of their junior players, many of whom have risen up through the senior teams over the last few years, the increased interest in the club has seen their membership swell.

During this relatively short period, 34 players have gained

representative honours in the various sections of junior development both at county and regional level.

The club would like to give gratitude to Lymm Rugby Club for their support during this time, for embracing the new organisation and allowing them to call Beechwood their 'home' too. In fact the rugby club even gave the first mens team some old shirts to use in their first few games! Now they are pleased to be able to sport their own purpose designed club kit which is now widely recognised across the region.

To celebrate the momentous occasion of reaching their 10th Anniversary, the club held a special dinner at the Park Royal Hotel in Stratton. Here former and current members both young and not so young joined together for games, music and dancing in recognition of the club's achievement.

Ladies Club Captain, (and former Club Chairperson), Liz Hopkinson, who was also the very first ladies member back in 2006, said: "It was a fabulous night, we as a family have made so many new friends at Lymm Hockey Club and our daughter has grown up with it."

That is what Lymm Hockey Club is all about - it is a family club where children can learn to play from as young as 5 or 6 years old and some of our mature players have been seen wielding a stick on the pitch into their mid 60s. The club really does span the generations and the genders. Lymm Hockey Club is a successful but all inclusive and family values are key to that prosperity. For more information visit [www.lymmhockey.com](http://www.lymmhockey.com)



## Controversial housing plan gets the go-ahead

A CONTROVERSIAL plan to build seven houses on vacant land previously used as a garden area at Lymm has been given the go-ahead by planning chiefs at Warrington - despite opposition from nearby residents.

The plan involves a land-locked site between Cedarfield Road and the disused Farmers Arms pub.

It was strongly opposed by 17 residents of Cedarfield Road, Orchard Road and Springbank Gardens who feared the development would lead to increased traffic on an already congested route - particularly the notoriously congested Sandy Lane.

There was also concern that the site would be over-developed and would overshadow bungalows in Cedarfield Road.

Local councillor Bob Barr also opposed the proposals which he claimed amounted to "garden grabbing."

Officers recommended the

scheme be approved. They pointed out the plans had already been amended which altered the siting of the houses and improved the relationship of the development with properties in Orchard Road and Springbank Gardens.

Conditions were agreed to protect local trees and hedgerows.





# SIMPLY BRITISH

All our fresh meat is 100% British.

**Netto**  
Scandinavian for value

**Lymm SHUTTERS & BLINDS**  
*Reliable. Professional. Affordable.*



We offer a wide range of beautifully made bespoke Plantation shutters, as well as all types of Blinds and Curtains.



We also offer a full Interior Design service for those that don't know where to start. This can include Carpets, Curtains, Wall paper and even advice on furniture, lighting and all things between and we can do this with the confidence that 25 years experience brings.

Call or email us today for a free consultation

T: 07738 934678 E: Neil@lymmshuttersandblinds.co.uk  
 www.lymmshuttersandblinds.co.uk

**Little Belters** **FREE TASTER SESSION NO AUDITION**

Now Recruiting in Lymm

For kids who love to sing!

Taught by professional singers • Group vocal tuition  
 Unique twists on popular songs • Public performances • Full-on fun!

Every Thursday at 4.45pm at the Youth and Community Centre on Bridgewater Street

Just call  
 @LittleBelters f /LittleBelters 07779 668 204  
 www.littlebelters.co.uk for further information

**skipthetips.org**



**DONATIONS URGENTLY REQUIRED**

Clothes, Shoes, Bags etc (any condition)  
 Furniture, White Goods, Bric-A-Brac, Toys, Electricals etc  
**Free House Clearance/Collection Service**  
 Please visit our shop and grab a bargain!

**07854 159 407**  
 Unit 4, Chaise Meadow, Lymm, WA13 9EL (Behind the Co-op)  
 Visit skipthetips.org or Email info@skipthetips.org

**EXCHANGE YOUR GOLD AND SILVER FOR INSTANT CASH**



All items of jewellery accepted

Did you know...?  
 We accept silver jewellery, cutlery, tea sets, spoons, cigarette cases, candlesticks, trophies, trays, medals, coins and pocket watches.

**ROLEX WATCHES WANTED! ANY CONDITION**

Open: Tuesday-Saturday: 10am - 5.30pm  
 1 London Road, Stockton Heath (First floor entrance on Fairfield Road)  
**07544 486 621**

**CHESHIRE GOLD XCHANGE**  
 GOLD & SILVER BULLION DEALER

**WELCOME TO THE IDEAL BUILDING COMPANY**




Our mission is to deliver a high standard of building work at competitive prices and give complete client satisfaction every time.

Our services include: Extensions & Conversions, Complete Refurbishments, Loft Conversions, Structural Works, Homes Offices, Kitchen & Bathroom fittings, Electrical, Heating and Plumbing works, Full Plan & Design Service and General Building work.

For a FREE consultation please call  
**01925 730888**

Urban Building Projects Ltd.  
 410 Europa Boulevard, Gemini Business Park, Warrington, Cheshire, WA5 7TR  
 Email: info@urbanbuildingprojects.co.uk Web: www.urbanbuildingprojects.co.uk



**aspire Computers Ltd**

41 Manchester Road, Woolston, Warrington, WA1 4AE  
 Tel: 01925 251143



**New Year HP Laptop Offer**

Intel Core i5-5200U Processor 2.2 GHz  
 4GB Ram + 500GB HDD  
 15.6" LED + DVD RW  
 Webcam + WIFI  
 Windows 10 Home 64bit

**Only £299.99 + VAT**

**Contact Us Now!**  
 sales@aspire-computers.com




**To get your business on track and in the 'Pink' contact James Bryan on 01925 631592**



# Harriet aims for success in medicine and on the running track

**INTERNATIONAL runner Harriet Knowles-Jones – who lives in Lymm – recently finished a superb second in the European Under-20 cross country championships – even though she is only 17.**

A student at Altrincham's Loreto Grammar School, she was leading up until the last 100 metres of a 4.1 kilometre race in Hyeres in Southern France when a German athlete caught her on the shoulder.

Harriet, daughter of former GB runner Jayne Knowles, said: "It was a very tactical race. There were four of us out in a group and I took the lead with 300 metres to go, but was caught near the line.

"I am now looking forward to the Edinburgh meeting between teams from Europe and America in the New Year, when there will be virtually all the same runners and I'll try to go one better then."

Alongside her athletics training, Harriet is working hard to earn a place, hopefully at Manchester University, to study Medicine or Biochemistry after getting eight A\*s, two As and one B at GCSE.

She is accustomed to combining both rigorous academic study and gruelling physical work.

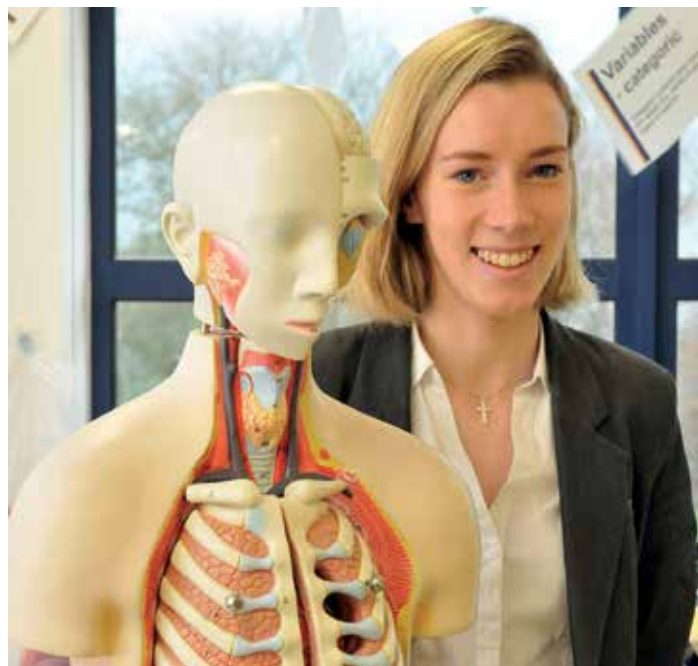
Harriet added: "I know it's quite a tough choice to do both medicine and athletics, but that's why I hope to go to Manchester so I can be near Mum, who can help with my washing and such like.

"As a former international runner she knows what is necessary to succeed."

Harriet runs for Warrington but is trained by Paul Roden at Sale Harriers, and would also hope to stay close to her successful training regime.

"If I went to Manchester I could also have access to my coach, who has been such a wonderful support."

Director of Loreto Grammar School Sixth Form Helen Jordan said: "We are all watching Harriet's progress with increasing excitement. She's a very hard working young woman, with great talent on and off the track and a delight to work with and have as a role model for our younger girls."



## Long serving sports teacher honoured

A long serving sports teacher at Lymm High School was honoured in the Queen's New Year Honours List.

Len Davies, who taught at Lymm High School from 1977 until his retirement in 2015, has been awarded the British Empire Medal (BEM) in the new year's honours list for his services to Rugby Union at levels including school, county, regional and national level.

He was master in charge of rugby at the school from 1981 onwards. In earlier years he was a compelling role model through his own high level playing career. He became a coach of growing experience and seniority, leading school teams in various age groups to local, regional and national success on numerous occasions. A number of individuals have gone on to success in the professional game, to regional and national representative schools rugby and many others have gone on to be involved in playing and enjoying rugby long beyond their schooldays. His involvement with coaching and selection at county, regional and national school aged levels has meant that his impact has been felt far beyond Lymm High School, but that the benefit of his wider involvement has also been returned to Lymm for the benefit of students.

In sport, whilst rugby is undoubtedly at the centre of his interests, he has overseen the broadening of the opportunities for students within PE and sport at Lymm with the result that students participate very widely in school and extra-curricular sport and excel in a range of sports, regularly producing elite performers at regional, national and international level. Currently the school is ranked 16th state school nationally by

School Sport magazine with regard to competitive achievement in a range of sports. Over almost four decades, Len can be credited with shaping the school culture that underpins these aspirations both for teams and individuals, succeeding in maintaining a focus on range as well as depth of provision. He taught many generations of children in Lymm, was part of the school's senior management team, and served as a staff governor.

Headteacher Gwyn Williams said: "We are all absolutely delighted to see Len's dedication, hard work and commitment to the school and to Rugby Union recognised by the award of an

honour. Through his own sporting career, his service as a teacher and his love of sport, he has been a great role model both for colleagues and for pupils. We are really pleased that while he is enjoying a well deserved retirement he continues to be involved in the school as a community governor."

John Hopkinson, Lymm Rugby Club President added "I am delighted for Len and Rachel, a great reward for a life time in rugby. In addition to Len's achievement with Lymm High School he has been a member of Lymm Rugby Club for over 30 years originally moving from Sale in the 1982/83 season and playing senior rugby until a

knee injury forced his retirement, but he was far from done. He took up coaching at the club and won back to back promotions in the first three years.

"His coaching involvement with Cheshire RFU started with the U21's and progressed to the senior team where he took charge for 11 years culminating in winning the county championship at Twickenham against Cornwall. Len continues his involvement with the club as a Vice President and is often around on Saturday afternoon's supporting the teams. A great rugby man, an honour well deserved."



Len is pictured with Mark Dixon and Alex Mitchell, two students who played for the England U18s rugby team.

**Obituary**

**Iris Bastow**



**TRIBUTES have been paid to former Lymm businesswoman and campaigner Iris Bastow who died in October.**

Iris was Lymm's family optician for more than 40 years and is well remembered for her caring ways, thorough eye tests and for the support she gave to Lymm village.

She campaigned for better parking, a street market and was a member of the Lymm Traders.

Iris was a keen horse rider and competed in many equestrian events in Cheshire.

She opened her first Lymm

business on Eagle Brow but later moved to Clifflands at the top of Whitbarrow Road and in 1980 finally settled at The Cross.

Her daughter, Cherry, said: "She loved Lymm, its residents, its history and caring for the eyes of all her patients, taking after her father, also an optician."

Cherry eventually joined her in the business but in 2008, it was forced to close.

Cherry is now continuing the family tradition with an optical outlet on Warrington Market.

She said: "My Mum taught me everything I know so I have high standards."

Iris passed away after two years of poor health with her family around her.

She had expressed a wish to have a horse drawn carriage for her funeral and to pass all her business locations before travelling to Altrincham Crematorium.

Funeral arrangements were by John Burrows and Sons of Lymm.

Established 1878  
**John Burrows & Sons**  
 Independent Family  
**Funeral Directors**  
**MG & J Tandy**  
 16 Higher Lane, Lymm, WA13 0AP  
 Chapel of Rest, Mill Lane, Lymm, WA13 9SE  
**Tel: (01925) 752501**  
 Golden Charter  
 Funeral Plans  
 www.johnburrowsandsons.co.uk

**CLASSIFIED**

**ACCOUNTANCY & BOOKKEEPING**

**arleys**  
 freelance and  
 contractor accounting  
 keeping it simple...  
**01925 598499**  
 www.arleys.co.uk

**Bookkeeper/Accountant.** Licensed for maintaining financial records, VAT Returns, Payroll Service, Management Accounts, SAGE Software Consultancy. **Contact: 07815 617914.** (6/1)

**CARPETS, CURTAINS & INTERIORS**

Paul Bains  
 Flooring Solutions Ltd  
  
 - CARPETS - WOOD - LAMINATES -  
 - DECORATIVE VINYL FLOORING -  
 - FREE CHOOSE AT HOME SERVICE -  
 101 Bucklow Gardens, Lymm WA13 9RN  
 T: 01925 748549 M: 07973 376224  
 E: paulbainsflooring@msn.com  
 www.paulbainsflooringsolutions.co.uk (16/16)

**BUILDING SERVICES**

**BRICKLAYER AVAILABLE** for garden walls, pointing etc. **Tel: 01925 755441 Mobile: 07966 491624** (15/16)

**CARPET CLEANING**

**A1 STAINBUSTERS:** Fully guaranteed carpet and upholstery deep dry cleaning. Clean & dry in only ONE hour. Leather, curtains cleaned in situ. Quotes for both commercial and domestic. **Contact the local expert John Latham on 01925 852088 or 07765 314080** (14/16)

**SIMPLY THE BEST CARPET CLEAN** YOU will ever have. Cleaners UK Ltd. Est 28 yrs. Have your carpets & sofas beautifully deep cleaned leaving them fresh smelling & colour restored. Latest & best methods. Dry/steam. Leather cleaning, oriental rug specialist. Professional, reliable & affordable. **For more info call Neil Riley on 01925 264989 / 07831 336060 www.cleaners-uk.net** (17/17)

**CARPETS, CURTAINS & INTERIORS**

**BLINDS, CURTAINS, CARPETS,** plantation shutters, paint, wallpaper. All popular brands available, including harlequin, PT, Little Green Paint co, F&B, Cormar and Victoria Carpets. **Xross Interiors, 16 The Cross, Lymm Tel 01925 758298 or email hello@xrossinteriors.co.uk** (13/16)

**Lymm Festival Winter Warmers**  
 lymmFestival.org.uk

**Blues Night:** With Rebecca Downes and her Band  
 Friday 5th February 2016  
 8:15pm (Doors 7:45pm)  
 Lymm Golf Club | £11

**Film Night:**  
 The Good Dinosaur **PG**  
 Thursday 18th February 2016 (Half Term)  
 5:00pm (Doors 4:30pm)  
 United Reformed Church, Brookfield Road | £4

**Suffragette** **12A**  
 Thursday 18th February 2016  
 8:00pm (Doors 7:30pm)  
 United Reformed Church, Brookfield Road | £7

**Folk Night:** With Greg Russell and Ciaran Algar Plus Calico with Compere Kathy Runswick  
 Friday 4th March 2016  
 8:00pm (Doors 7:30pm)  
 Lymm Golf Club | £11

**Tickets on sale now**  
 Visit [lymmfestival.org.uk](http://lymmfestival.org.uk)

Tickets Available From [lymmfestival.org.uk](http://lymmfestival.org.uk)  
 or Lymm Electric, Bridgewater Street, Lymm, WA13 0AB  
 Connect with us on Facebook and Twitter  
 Search: **LymmFestival**

**CANVAS COLOUR PRINTS**  
 500mm x 500mm  
**£24.70** +VAT

**50 WEDDING INVITATIONS**  
 FULL COLOUR  
**£24.70** +VAT

**50 A3 POSTERS**  
**£24.70** +VAT

**100 BUSINESS CARDS**  
**£2.47** +VAT

**1x A2 COLOUR POSTER**  
**£2.47** +VAT

**PRINT PROBLEMS SOLVED!**  
 BANNERS • STICKERS • MAGAZINES  
**FINERS • POSTERS**  
 OFFICE STATIONERY  
**CUSTOM PRINTS**  
 FOLDERS • CARDS • SIGNAGE

**twentyfour seven**  
 design & print ltd  
 info@247print.net • 01925 240247  
 The New Media Centre • Old Road  
 Warrington • WA4 1AT  
 the **NEW MEDIA** centre

Artwork needs to be supplied in a print ready format. Payment must be made when ordering.

**CLASSIFIED**

**FREEPHONE 0800 955 5247 to advertise**

**CLEANING SERVICES**

**arleys angels**

- Spring Clean Specialists
- Presenting your home for sale
- Moving house
- After building work cleans

**01925 266834**  
... because you're worth it!

**SIMPLY THE BEST CARPET CLEAN YOU** will ever have. Cleaners UK Ltd. Est 28 yrs. Have your carpets & sofas beautifully deep cleaned leaving them fresh smelling & colour restored. Latest & best methods. Dry/steam. Leather cleaning, oriental rugs specialist. Professional, reliable & affordable. **For more info call Neil Riley on 01925 264989/ 07831 336060 www.cleaners-uk.net**

**ELECTRICAL CONTRACTOR**

**TRUST PROPERTY ELECTRICAL SERVICES.** NICEIC Part P Approved Contractor. All Electrical work undertaken. Inspection & Testing & PAT Testing. All work certified & guaranteed. **Call Tim on 07754409906 or 01925 601055**

**EQUESTRIAN**

**LYMM RIDING SCHOOL.** For all ages and abilities. Friendly atmosphere, group/private lessons priced from £12 on well schooled Horses/Ponies. Pony days and parties available. For more details contact Rebecca Bennett (Reg All) **Tel: 01925 750435. Mob: 07778 866006.**

**EQUESTRIAN SUPPLIES & ANIMAL FEEDS**

**STABLES SADDLERY.** Est 1964. Good stock of all equestrian supplies and animal feeds. Also storage available for trailers, caravans and household goods etc. **Tel: Barbara Williams on Lymm 752762.**

**FARMING / FIELD SERVICES**

**NEIL WORTH CONTRACTING** FOR hedge trimming & paddock/small field work. Also septic Tank emptying. Scrubland clearance. Specialist in Japanese knotweed spraying. **Tel: 07973 242808. www.nworthcontracting.co.uk**

**Lymm Life**

offers a cost effective local **LEAFLET DELIVERY** service at competitive prices. We can also design and print leaflets with our in-house design team.

**Call us now on 0800 955 5247**

**GARDENING SERVICES**

**Beechwood Industries Ltd**

- Garden Maintenance
- Lawn Care
- Landscape Design
- Construction
- Paving
- Tree Surgery
- Free Assessment
- Free Consultation

Contact us on: **07749 253 308 / 01925 860544**

**JDS LANDSCAPE & GENERAL BUILDING SERVICES (LYMM BASED)**

Garden Design • Driveways  
Patios • Garden Walls • Fencing  
Decking • Resin Bond Driveways  
See website for examples

**Tel: 01925 754883 Mob: 07515 967735 www.jdscreate.com**

**GARDENING SERVICES**

**JP LANDSCAPES**

- Block Paving - Tarmac
- Slabbing - Driveways
- Patios - Graveling
- Brickwork - Steps
- Fencing - Decking
- Power washing - Turfing
- Driveway Repairs

**0800 858 9961 or 01925 393 188**

**GATES & FENCING**

**Village Gates**

Manufacturers and installers of quality timber gates

**villagegates.co.uk**

For free quotes and advice call **01925 552322**

**HANDYMAN**

**Handyman Services Home, Office & Garden**

Internal and External Painting • UPVC Window and Door Repair and Replacement  
Mechanism/Lock Changes • Soffits and Fascias  
Gutter Cleaning, Repair and Replacement  
Flagging • Fencing • Patios • Jet Washing  
All Garden Work • All DIY

Call today for a FREE quote

**Tel Neil: 01925 757905 (Lymm Based) Mob: 07813 201850 handymanerviceslymm@hotmail.co.uk**

**HAIR & BEAUTY**

**PROFESSIONAL MOBILE** hairstylist, creative cutting, colour/colour correction, including foiled highlights. **Tel: Lorraine 01925 755441 / Mob 0786 7910805.**

**HOME SERVICES**

**ATLAS**  
Your friendly local independent

**PEST CONTROL CHIMNEY SWEEPING**

Affordable, professional, guaranteed service. Fully insured, fixed prices - no surprises once on site!  
**Discrete vehicles, no embarrassing signs**  
**07999 487 925 / 01925 445 222 www.atlas4u.co.uk**

**HYPNOTHERAPY**

**MICHAEL MAHONEY** clinical hypnotherapist for IBS, Stress, Anxiety and many other problems. Medical Research project experience, BUPA Service Provider. **For free information sheet please email TimelineServices@aol.com or ring 01925-658322 www.healthyaudio.com**

**JOINERY**

**S3 JOINERY** (Lymm based)

Joinery/Carpentry • Custom Cabinets and Built-ins • Kitchens • Decking  
Flooring • Property Refurbishment

No job too small. Free quote  
Fully insured and guaranteed

**01925 694133 07590 470971 www.s3joinery.com**

**MORTGAGES**

**INDEPENDENT MORTGAGE ADVICE.** For local, impartial and professional advice on all aspects of mortgages contact Darren Simpson at Infinite Financial Services on **08450 309099 (local rate) or 07708 975122.**

**OPTICIANS**

**ADCOTT OPTICIANS.** State of the Art opticians in the heart of Lymm Village. Comprehensive sight tests and a wide choice of spectacles tailored to you, whatever your budget. **01925 757075**

**PAINTING & DECORATING**

**ANTHONY MASON PAINTER AND decorator** Over 25 years experience. Neat, clean, reliable service. All aspects including papering, paint finishes, colour advice and furniture painting. **Tel. Tony Mason: 07962532811.**

**BENJAMIN'S PAINTERS AND Decorators.** 20 years professional experience in commercial and domestic decorating, wallpapering, coving, interior and exterior work. **Telephone 07837 452514 or 01925 755198.**

**PAYROLL**

**WHY TRY TO BE A PAYE EXPERT?** Watkinson Black can provide a cost effective payroll service, releasing you to concentrate on your business. **For further details please phone: 01925 413210 or e-mail: info@warringtonaccountants.co.uk**

**PLUMBING**

**CL PLUMBING AND GAS SERVICES** Local honest plumber covering all aspects of plumbing and gas works. Boilers and central heating installed and repaired. Bathroom suites supplied and fitted. Cookers and fires fitted. Landlord gas safety checks. All plumbing emergencies - 24 hour call out. No job too small, OAP Discount rates. **Tel Craig 01925 819692 07851 405466 www.warringtonplumbingservices.co.uk**

**Gas Safe Registered Engineer**

Andy Gas of Lymm, specialist in: Boiler upgrades, servicing, repairs to all domestic heating and gas appliances. For a professional service call Andy **07753 838129 or 01925 753712**

**PRIVATE HEALTHCARE**

**health ENRICH Private Health Care**

01925 871 842  
07801 656 919  
zoel@health-enrich.co.uk  
**www.health-enrich.co.uk**

**RE-UPHOLSTERY**

**Orchard Soft Furnishings**

RE-UPHOLSTERY  
CURTAINS • BLINDS

FREE MEASURING & FITTING

TEL: (01925) 756388  
**www.orchardsoftfurnishings.co.uk**

**RUBBISH REMOVAL**

**ALL TYPES OF RUBBISH REMOVED,** garages, attics, cellars. Reliable friendly service. 35 years experience and fully licensed. **Tel 07850 500652.**

**TAXI / PRIVATE HIRE**

**Frazer's of Lymm**

Private Hire Service • Good local rates  
Reliable friendly service • up to five seater  
Airport • Station Schools • Business or pleasure for OAPs

**Contact Nigel on 01925 754426 07812 674822**

**TAXI / PRIVATE HIRE**

**Horn's**

Airport Transfer & Taxi Specialists  
**CALL MARTYN: 01925 751761 MOBILE: 07881 786250**

**TUITION**

**PIANO & KEYBOARD LESSONS** in your own home. Experienced Music Teacher - all levels taught in the local Lymm area. Competitive Rates. **Tel: 01925 756189**

**UPHOLSTERY**

**BRIDGE FURNISHINGS. OVER 30 YEARS** experience reupholstering and repairing all types of upholstered furniture. Manufacturing fitted loose covers. Large selection of fabrics and cushion inners. **Call 01925 232484 or 07950 856227. 78 Warrington Road, Statham WA13 9BT.**

**WINDOWS & GLAZING**

**NEIL COPELAND WINDOWS & Conservatories Ltd.** Specialist in uPVC double glazing windows, doors, porches, conservatories, also fascias and guttering. FENSA registered. All work guaranteed. **Tel: 01925 756138 / 07961 361550.**

**DOUBLE GLAZING.** For all your glazing requirements units including failed and misted units, broken windows, mirror fixing, UPVC doors and window frames. Kite marked to B/S. Time served glazier with over 30 years experience. **SP GLAZING. For a friendly no obligation quote tel Sam Pendlebury on 01942 671859. Mob 07919 660296.**

**MOTORING SERVICES**

**PARKVIEW CAR SALES**

**We buy and sell QUALITY CARS**  
Best price paid

Telephone Peter on **01925 575737 / 07957 545479**

23 Padgate Lane  
Padgate, Warrington  
Cheshire, WA1 3RS

# Banner & Co

Independent Residential Sales and Letting Agent



## LET US MAKE THIS YEAR YOUR YEAR TO MOVE



# 2016!



## CALL TODAY FOR A FREE, NO OBLIGATION MARKET APPRAISAL



01925 753636 [www.bannerandco.com](http://www.bannerandco.com)

Please note that if you have already instructed another agent, we would advise you to check any agreement you may have to ensure you are not liable for more than one commission by instructing us as your agent

