

**Lymm**

# Life

**FREE EVERY MONTH**

**January 2016**

**Issue: 202**



**urban**

BUILDING PROJECTS LTD

**Extension &  
Building Renovation  
Specialists**

**Tel: 01925 730888**

[www.urbanbuildingprojects.co.uk](http://www.urbanbuildingprojects.co.uk)



## **Rain fails to dampen Christmas spirits**

**Centre pages**

**Banner & Co**

Independent Residential Sales  
and Letting Agent

See our main advert  
on the back page  
for details

**01925 753636**



**LYMM  
PARISH  
COUNCIL**

Approved by Lymm Parish  
Council as the official  
magazine for Lymm

**eden**

RESIN BOUND SPECIALIST



[www.eden-resin.co.uk](http://www.eden-resin.co.uk)

**01925 263125**

**Regular news updates at [www.lymmmlife.co.uk](http://www.lymmmlife.co.uk)**



**Editor**  
Gary Skentelbery

**Production**  
Paul Walker

**Advertising**  
James Balme  
Freephone  
0800 955 5247

**Editorial**  
01925 623633

**Email**  
info@lymmmlife.co.uk

**Websites**  
www.lymmmlife.co.uk  
www.culchethlife.com  
www.frodshamlife.co.uk  
www.warrington-  
worldwide.co.uk  
www.warrington.tv

**Address**  
New Media Centre  
Old Road Warrington  
WA4 1AT

*Lymm Life is published  
monthly by Orbit News Ltd.*

*The contents of this magazine  
are fully protected by copyright  
and nothing may be reprinted  
or reproduced without prior  
permission of the publishers.*

*The publishers are not liable for  
any statement made or opinion  
expressed by third parties in this  
publication.*

*Printed by TwentyFourSeven*

# Editor's Comment



I WAS sorry to see the closure of Cotebrook House which is now in the hands of liquidators - with a big question mark hanging over the future of the site.

Formerly the country home of the Dewhurst family, it had been

a registered residential home for physically disabled adults since 1946 and some of its residents had lived there for more than 50 years.

It was reassuring to hear that all residents had been rehomed in the Warrington area or closer to their families, although it must have been quite a wrench for those who had been residents for many years.

## Local charities

It was also good to hear that any windfall from the sale of the building will benefit local charities.

The management committee has provided the liquidators with a list of local charities they would wish to benefit.

But now the big question is what will happen to the property? We will be watching with interest.

Meanwhile I attended the official opening of the Netto store in the village which attracted a lot of local interest.

It was good to meet the people running the business and they seem very keen to be part of the local community - which is good news.

Feedback on our social media pages has been mainly positive, although there were some parking issues on the opening day.

But from what I have seen and heard so far Netto will be a welcome addition to the local business community.

Hopefully it will encourage more people to do their shopping in Lymm and make more use of all the local shops and businesses.

**Deadline for  
the February  
issue of  
Lymm Life is  
January 5**

*New Year, New You!*

**CHESHIRE  
Natural  
Health**

**Do you want to stop smoking?  
Or lose weight?**

**Our specialist Hypnotherapy programs can  
help you achieve your goals**

Please call to find out more  
**Tel: 01925 730123**

www.cheshirenaturalhealth.co.uk  
Cheshire Natural Health, Beehive House, Tarporley Road, Stretton, Warrington

## N & J STANHOPE Coal and Log Supplies

Best Quality Coal  
Smokeless Fuel  
Logs Supplied in Bags and Bulk  
Fresh Bacon and Eggs  
**Open 7 Days**  
Broomedge Farm  
Burford Lane, Lymm WA13 0SE  
**Tel/Fax: 752830**

## KEATE HOUSE CARE HOME

**Quality person-centred care for your elderly loved one**

Keate House is an independent family-run Care Home, specialising in providing Residential, Dementia, Respite and Day Care services for the elderly. Situated in the beautiful village of Lymm, our lovely purpose designed home is supported by our compassionate team, dedicated to providing only the best in quality person-centred care in our happy, stimulating and homely environment.

- Residential Care
- Respite Care
- Dementia Care
- Day Care

To talk to one of our Care Managers or to arrange a visit,  
call: **01925 752091** Brookfield Road, Lymm, Cheshire WA13 0QL  
Email: [info@keatehouse.com](mailto:info@keatehouse.com) Web: [www.keatehouse.com](http://www.keatehouse.com)

*Enriching life with quality care*



INVESTORS  
IN PEOPLE



CareQuality  
Commission



LL12.15





# Cotebrook House now in the hands of liquidators

THE future of Cotebrook House, Lymm, is now in the hands of a firm of liquidators in Manchester following the closure of the 69-year-old home on October 31.

All residents were found suitable alternative accommodation – many in the Warrington area and others closer to their families.

In a statement, the Cotebrook Management Committee said: "The committee has been totally committed to ensuring that all the residents were moved to a place where they will continue to be as happy in the future as they have been at Cotebrook.

"Their welfare has been our highest priority and over the last few months, the varying authorities have ensured that all of the residents have been moved to places which suit their needs."

The liquidators are now attempting to sell the building and, in line with Cotebrook's constitution, the proceeds will go to charity. The committee has provided the liquidators with a list of local charities they would wish to benefit.

Cotebrook House has been a home for physically disabled adults since 1946.

But a fall in the number of residents in recent years, coupled with rising costs, led to increasing and unsustainable losses.

The committee had sought ideas from the borough council, other care organisations, staff, residents and their families and other friends

of Cotebrook. But no suggestions were forthcoming which could have provided a viable and secure future for the home and its residents.

"The financial situation has, in fact, got worse this year with numbers falling. Together with this, a number of the residents were needing to move into nursing care settings for which Cotebrook is not registered with a resulting further fall in numbers."

Most residents were introduced to Cotebrook by borough councils in the North West, the key one being Warrington.

"The committee are grateful to Warrington Borough Council for their help and expertise in relocating the residents and closing the home."

The committee paid tribute to the hard working and highly professional staff, who had remained loyal to Cotebrook and

its residents over many years.

"The staff have continued to provide the residents with their usual level of care and attention under extremely difficult circumstances for which the management committee truly thank them."

The committee also expressed its

thanks to the many people who had worked at Cotebrook, volunteers who had given their own time and to the various tutors, teachers, quiz masters and musicians who had contributed to the well-being of the residents.



**We Clean Ovens** ...so you don't have to!

Call us today to leave your cooking appliances sparkling, using our eco friendly products.

**oven**  
oven valeting service  
Local | National | Affordable

Our oven cleaning experts will leave you free to enjoy your valuable leisure time.

Call for LOCAL service

**01925 453377** [oven.co.uk](http://oven.co.uk)

## Sophies Soft Furnishings

Curtains • Roman Blinds  
Cushions • Tiebacks • Poles  
Tracks • Valances • Pelmet

We design, make and fit to meet your exact requirements.

For free home visit or advice ring  
**Anne on 01925 754446**

[www.sophiessoftfurnishings.co.uk](http://www.sophiessoftfurnishings.co.uk)

## The Premier Wood Furniture Specialists

**BRAND NEW**  
Wentworth Bedroom  
Ivory Painted with Rustic Pine Top  
(Dining & occasional range also available)

Exceptional Choice  
Stylish & Contemporary  
Outstanding Service

**sale**  
STARTS 27th DECEMBER  
FANTASTIC SAVINGS ON ALL RANGES

**branches**  
The home of beautiful wood furniture  
Wilderspool Causeway,  
Warrington WA4 6QP  
Open: Mon to Sat 9am-5.30pm,  
Sun 11am-4pm  
Tel: 01925 241869  
Store closed:  
23rd-26th Dec & 1st Jan

Shop online: [www.branchesfurniturewarrington.co.uk](http://www.branchesfurniturewarrington.co.uk)

**orb jewellery**  
[www.orbjewellery.com](http://www.orbjewellery.com)  
1 The Grove, Lymm WA13 0HW  
Phone: 01925 759492

Over 20 Years Experience

*Truly Bespoke Jewellery...*

Bespoke Jewellery Design  
In-house Jewellery Workshop  
Replacement Batteries for Watches  
Valuation Service

**January Offer**  
**Free check and clean on rings**  
**Rhodium Plating Half Price**  
(Normal price £45)



## What's On in conjunction with Lymm Parish Council



**January 11th**  
**LYMM HISTORY SOCIETY**  
How British Conscripts helped to win the Great War - Chris Payne  
Visitors always welcome  
More info Lynne Smith 01925 756776

**January 12th 2016**  
**LYMM PARISH COUNCIL**  
Lymm Parish Hall 7.30pm

**LYMM THURSDAY EVENING BRIDGE CLUB**  
Lymm Village Hall every Thursday 7pm

**MAPLE LODGE ART GROUP**  
Meet each Wednesday 9.30am - 12.30pm  
Oughtrington Community Centre, Lymm  
Details: 01925 755126

**ROTARY CLUB OF LYMM**  
Every Wednesday at Statham Lodge Hotel  
7.15pm for 7.30pm  
Contact the secretary 01925 650189

**LOVING HEARTS & HANDS**  
Knitting for charity at Lymm Methodist Church,  
2nd and 4th Thursday each month.  
1.30pm - 3pm. Details: 01925 753298

**MARKET LUNCHES**  
Eagle Brow Methodist Church  
3rd Thursday in the month  
Light lunches 12 noon till 2pm. All proceeds to  
Youth For Christ and YMCA Club at The Inn

**LYMM SCOTTISH COUNTRY DANCE CLUB**  
St Mary's Church Hall  
Second and fourth Fridays (Sept - May)  
7.30pm. Details: 753853

**GARDENING CLUB**  
Meet Third Wednesday of the month  
Lymm Baptist Church, Higher Lane. 7.30pm  
Visitors welcome. £2 includes tea and cake

**LYMM FLORAL ART GROUP**  
Lymm Village Hall  
Third Monday of the month (except August)  
at 7.30pm

**LYMM ORNITHOLOGY GROUP**  
Lymm Village Hall, 7.45pm for 8pm,  
Last Friday in the month (ex June & July).  
Guest speaker, Slide Show, Refreshments.  
Visitors welcome. First visit FREE.  
Also field trips. Details: lymmog.co.uk

**LYMM PHOTOGRAPHIC SOCIETY**  
Every 2nd and 4th Wednesday  
(ex July & Aug), 7.30pm  
Spread Eagle pub, Eagle Brow.  
Details: www.lymmphotosoc.org.uk

**LYMM WINE AND BEER CIRCLE**  
3rd Wednesday of the month, 8pm  
The Spread Eagle Hotel  
Details: 01925 604400

**LYMM CONCERT BAND**  
Rehearsals every Thursday evening  
United Reformed Church, 8pm.  
Details: 01925 752934

**THE VENUE, LYMM**  
Chess Club every Monday from 6pm,  
Open Mic Night every Tuesday from 9pm,  
free chinese meal and 2-1 cocktails  
every Wednesday, Live Music every  
Thursday and Saturday

**LYMM WI**  
Every second Wednesday, 2-4pm at Lymm  
Youth and Community Centre. Visitors  
welcome.

**LYMM BOOK CLUB**  
Second Thursday of the month 7.30pm,  
Spread Eagle, Eagle Brow. Details 01925  
752371

**LOW CARBON LYMM**  
Every second Monday of the month. 7.30pm,  
Spread Eagle. 07786 074741 all welcome

**4LYMM VOLUNTARY ORGANISATION**  
Meet every 2nd Monday at 7.30pm in the  
Bridgewater Club, Whitbarrow Road.  
All welcome. Tel 01925 756378 for details.

To feature your event on this page  
please call our team on  
01925 631592



**LYMM  
PARISH  
COUNCIL**

Next meeting is  
Tuesday, January 12  
Lymm Parish Hall 7.30pm

# Winter warmer music and movies in Lymm

LYMM Festival's Winter Warmers include a blues night, film night (including a children's film) and a folk night early in 2016.

The popular Winter Warmer Blues Night will take place at Lymm Golf Club on Friday, February 5 at 8pm and will feature Rebecca Downes and her band. Rebecca's voice and performances have been likened to legendary artists Tina Turner, Etta James and Janis Joplin. With tickets at just £11 it's sure to be a great night.

Disney Pixar's The Good Dinosaur and Suffragette hit the big screen at the Festival's Winter Warmer Film Night. Keep the kids entertained this February half-term with a trip to watch The Good Dinosaur at the United Reformed Church at 5pm on Thursday, February 18. With a quick turn-around there's a change of mood for an adult crowd with Suffragette screening at 8pm on the same day. Tickets are priced at £4 for The Good Dinosaur and £7 for Suffragette. Advance booking is highly recommended.

The Festival's Winter Warmer Folk Night is headlined by two time BBC Folk Award winners Greg Russell and Ciaran Algar. Supported by Calico who make a return to Lymm after playing at the 2015 Festival. This looks set to be a great night of fantastic music at Lymm Golf Club on Friday, March 4.

Tickets for all Lymm Festival's Winter Warmers can be booked online via [www.lymmfestival.org.uk](http://www.lymmfestival.org.uk) or purchased from Lymm Electric in the village. Tickets may be available on the door but it is recommended buying tickets in advance to avoid disappointment."



BBC Radio 2 Horizon Award Winners Greg Russell and Ciaran Algar.

In 2016 we will be celebrating our  
25th year of providing child care  
and education in Lymm



We are delighted that our recent Ofsted inspection at  
The Rosebank Centre said we are **outstanding**.

- "Leaders are inspirational"
- "Children make excellent progress"
- "Staff know children very well"
- "Children are extremely well supported by staff"

The Rosebank Centre, 3 months to 3 years 01925 756900

Rosebank Naturegarten, 2 to 11 years 01925 758959

[www.therosebankcentre.co.uk](http://www.therosebankcentre.co.uk)

High quality care at  
reasonable prices

**Grappenhall**  
DENTAL PRACTICE

Independent private practice

Private dentistry at NHS prices (conditions apply)

Now taking new clients due to  
expansion after 9 successful years

Easy parking/ground floor easy access  
including wheelchair

State of the art equipment / highest standards  
of cleanliness / cross infection control

Emergencies seen same day / no waiting lists  
Late night opening Tuesdays until 8pm

Dr Andrew Brown and associates welcome new patients

Tel: 01925 210977 or 01925 481341  
148 Knutsford Road, Grappenhall, Warrington WA4 2PW  
[grappenhalldentalpractice@virginmedia.com](mailto:grappenhalldentalpractice@virginmedia.com)  
[www.dentistswarrington.co.uk](http://www.dentistswarrington.co.uk)



**Thelwall Upholstery**

FOR THE MOST COMPETITIVE RATES IN THE AREA

49 Knutsford Road, Grappenhall WA4 2NR

Call Sean on: 01925 604770 or mobile: 07799 228080  
[www.upholsterywarrington.co.uk](http://www.upholsterywarrington.co.uk)

For all your upholstery needs

SPECIALISTS IN:

- Re-filling Cushions • Re-springing • Full Re-upholster
- Dining Furniture • Headboards

A wide range of sample books to choose from  
All at competitive rates

PHONE FOR YOUR FREE ESTIMATES







# Divorce Finances Settlements

"If anyone needs legal advice I doubt they could do better than using this excellent law firm."

"My first meeting with Caroline put me at ease, I was distressed and anxious but when she fully explained the process ahead of me I knew Caroline would guide me through this difficult time."

"Pleasant, thorough, determined and diligent throughout."

"Highly recommended!!!"

**Various finance  
options available**

**Private appointments from  
8am - 9pm  
weekdays  
and  
9am - 12 noon  
Saturday mornings**



[www.bpslaw.co.uk](http://www.bpslaw.co.uk)

**17 Cecil Road  
Progress House, Hale  
Altrincham, Cheshire  
WA15 9NZ**

**Tel: 0161 926 1430**

**Manchester City Centre  
Cardinal House  
20 St Mary's Parsonage  
Manchester, M3 2LY  
Tel: 0161 834 2623**



## Shoppers raise £280 for school defibrillators

BIG-hearted shoppers have raised £280 towards the cost of providing life-saving defibrillators at Lymm High School.

Customers at the Cherry Lane Co-op store bought raffle tickets for a floral display donated by local florist Karl Welsh to raise the money.

It was the first of a number of initiatives to raise £3,000 required to provide two defibrillators at the school – and they will be getting some “big name” help.

Stone Roses star Ian Brown, who is a customer at the store, has promised to donate two tickets for an upcoming concert.

Karen Teasdale, from the Cherry Lane store, said: “Everyone has rallied round to help. We hope to raise enough money to purchase the defibrillators and we have got off to a good start.”

# High School receives much sought after ‘Girls Into STEM’ grant

LYMM High School has been selected to take part in the VEX Robotics and National Grid sponsored ‘Girls Into STEM’ programme.

The shortage of engineers in the UK is well-documented and needs 100,000 new graduates in Science, Technology, Engineering and Mathematics (STEM) subjects every year until 2020 just to maintain the current numbers of those in employment! What is even more staggering is that only 6% of the engineering workforce in the UK is female. VEX Robotics, with National Grid, have formulated the ‘Girls into STEM’ programme to draw more girls into this exciting field.

Lymm High have created a top

team of winning girls to participate in the programme. The team competed against hundreds of schools and managed to impress the judges with their exciting and creative submission, receiving a grant to go on and participate in this year’s VEX Robotics Competition – Nothing But Net. The all-girl Lymm team are now working hard building their Robotics creation so they can compete in the regional VEX Robotics competition and follow their dreams of gaining a place in the national finals in March 2016 at The Big Bang Fair.

Jonathan Richardson, Education and Skills Specialist at National Grid, says - “As well as encouraging female students to

consider careers in STEM areas, involvement with VEX Robotics equips participants with the key transferable skills that all industry is looking for - Communication, Team Work, Time Management, Project Management.”

Mr McAteer, Head of Computing at Lymm and Royal Academy of Engineering consultant adds, “We are so proud of the enthusiasm shown by our students to get fully involved in this project. We have a lot of our girls that would like to get involved in Robotics teams. We are currently seeking sponsorship for these teams, if you want to make a real difference please contact me at the school for further detail at [www.lymmhigh.org.uk](http://www.lymmhigh.org.uk)”

## IRLAM AND CADISHEAD CARS

24 HOUR PRIVATE HIRE SERVICE  
DRIVERS WANTED - BUSY CIRCUIT

Tel: (0161)  
**777 8888**

BIGGER FLEET - BETTER SERVICE  
PART OF NEW CADISHEAD CARS LTD



*“Teachers demonstrate good subject knowledge and organise interesting and well-paced activities to capture students’ imagination.” Ofsted*



## Lymm High School

Lymm High School, Oughttrington Lane  
Lymm, Cheshire, WA13 0RB  
Tel: 01925 755458 Email: [info@lymmhigh.org.uk](mailto:info@lymmhigh.org.uk)  
[www.lymmhigh.org.uk](http://www.lymmhigh.org.uk)



# Arrow Lettings – An uncompromising approach!

ARROW Lettings is a new Lymm based property management company run by Anna Rowe, who has over a decade of experience in residential and commercial lettings in Lymm and throughout the North West.

The agency has launched a new lettings agency model – bringing together the best of a high street agent and local knowledge, with the competitive pricing of an online agency.

Anna said: "We constantly hear from landlords and tenants that they are looking for a more affordable letting service, backed by a local presence, which delivers consistent and uncompromising service in return for fair and transparent fees."

With many years' experience, a 100% record on rent collection, and a network of local tradesmen to call upon, Anna and her team can more than match the service of any high-street agent. Plus, because they are based from their home-office in Lymm, they are able to offer a price which can compete with any online agent.

Arrow's principles:

- No 'office hours' – they are available 24/7



- Fair and totally transparent prices. ALL fees are available on our website.
- Successful, long-term relationships with both landlords and tenants.
- 100% record for rent collection – testimonials available.

So, if you are planning a buy-to-let investment, considering letting out an existing asset, or looking for a property to rent in the Lymm area, then please contact Anna Rowe at Arrow Lettings Ltd 01925 759192 – anna@arrowlettings.com.

## ARROW Lettings

Attention Landlords:

**Strong demand for quality local property!**

Highly competitive rates and zero VAT

100% record for rent collection

24hr / 7days a week availability

Residential and Commercial Lettings

**Lymm 01925 759192 / 07809 876812**

[www.arrowlettings.com](http://www.arrowlettings.com)

## Meet your MP David Mowat

David Mowat, MP for Warrington South, holds regular surgeries throughout the constituency. If you would like to arrange an appointment to discuss an issue of concern to you please

e-mail him at [david.mowat.mp@parliament.uk](mailto:david.mowat.mp@parliament.uk) or telephone **01925 231267**.



**David Mowat**

Member of Parliament for Warrington South

[www.davidmowat.org](http://www.davidmowat.org)

Produced by David Mowat MP, House of Commons, London SW1A 0AA

## Celebrate the New Year with a Quality Kitchen Makeover

**Order  
This Month  
and Pay  
No Vat!**

With a quality Dream Doors facelift you can save £1000's, and it will only take a few days to install.

**Save Time and Money  
with Less Disruption!**

- Trusted reputation
- Large choice of doors, worktops, appliances and accessories
- 50% deposit balance on completion



\*Terms & Conditions apply, please ask for full details

**Call now for a Free Design  
quotation 01925 211308**

## DREAM DOORS®

Visit our Showroom: 92 Knutsford Road,  
Grappenhall, Warrington WA4 2PJ

[www.dreamdoors.co.uk](http://www.dreamdoors.co.uk)

## NEW LIFE FOR OLD KITCHENS

Over 130  
Reviews on

**Checkatrade.com**  
Where reputation matters





## Less is More!

- Get paid quicker – Improving your cash flow
- Less time spent sorting old receipts – Free up countless hours each week.
- Less jargon and more proactive advice – Watch your business flourish.

*Don't let these issues hold your business back.*

To find out how we can remove your financial headaches call us:

**01925 761600**

or visit us at:

**www.stylesandco.co.uk**

**styles and co.**  
chartered accountants

xero

SILVER PARTNER

# Keeping it in the family at Lymm Youth and Community Centre

THE Cadwallader family are a great example of how Lymm's revitalised Youth and Community Centre has touched every generation.

Mum, Estelle who is a professional photographer and an enthusiastic supporter of the centre has regularly acted as unofficial photographer at a number of the centre's events including the recent open day to celebrate the WREN funded improvements.

Daughter Ebony's first contact with the centre was when she joined the Junior Youth club run by Su Williams. Ebony, who now attends Lymm High School, has now graduated to become a member of the young team of helpers at the Junior Club which runs every Friday evening from 4.45 to 6.15.

The club is run by Sarah Latimer who also organises the drama club which follows at 6.30. The highlight of the drama group's year was a one week Summer School where the team, including Ebony and younger brother Mikey, produced their own video interpretation of Alice in Wonderland.

Meanwhile Estelle's father, retired architect Mike, has the seniors scratching their heads with his original quizzes at the monthly Senior Socials (third Wednesday of each month 1.15 - 3.15). Each quiz has a theme. Last month all the answers were famous people with the same first and last initial e.g.

Ronald Reagan, Marilyn Monroe. The quizzes have proved so popular that they are now regularly sent as far afield as Anglesey for other groups to enjoy.

During December the centre was packed as usual for the annual Christmas Dinner when the seniors were joined by other guests from the community including Parish Councillors. Entertainment was provided by young singers from Statham Community Primary

School.

Volunteer Su Williams said: "If you or any of your family would like to find out more about any of the wide range of activities or could consider giving some time at the centre – as little as a couple of hours a month could help – visit the website [www.lymmca.org.uk](http://www.lymmca.org.uk)."

New activities are starting all the time. The latest is the Little Belters Junior Singers on a Thursday. [www.littlebelters.co.uk](http://www.littlebelters.co.uk)



**simplesolutions**  
Financial Management Ltd  
INVESTMENTS & PENSIONS

## INVESTMENTS

Our investment expertise will ensure that you have the most suitable investment to help you achieve your financial goals.

We use:

• Asset Allocation • Risk Profiling • Diversification • Correlation

## PENSIONS

Pensions are changing due to the March 2014 budget and you now have a lot more options to consider

### TECHNOLOGY

Simple Solutions uses the latest technology to keep you updated, even when you are on the move or abroad, check out our website for more details.



1st Floor, 67 London Road  
Stockton Heath, Warrington  
WA4 6SG

Tel: 01925 266628 Fax: 01925 267043

[www.simplesolutions.financial](http://www.simplesolutions.financial) @SimpSolsFA

Simple Solutions Financial Management Ltd is authorised & regulated by the FCA. The registered office is 1st Floor, 67 London Road Stockton Heath, Warrington WA4 6SG. Registered in England & Wales. The company Re No 6920858

# STAIRLIFTS

**STRAIGHT  
CURVED  
NEW**

**RECONDITIONED  
SERVICE & REPAIR  
HEAVY DUTY  
NARROW STAIRS  
MADE IN THE U.K**



**multicare**  
MOBILITY

**0800 833439**  
**WWW.MULTICARE.CO.UK**





Raffle winner Gwen Smith.

## Marie Curie charity lunch

THE Marie Curie South Warrington Fundraising Group raised a total of £578 at their 3rd Annual Charity Lunch at Café Salar in Lymm in November.

The afternoon was a great success and guests enjoyed a welcome drink followed by a delicious two course lunch. Many thanks to all at Café Salar for making it such a special day. Thanks, too, to Catlyn Italian Gifts who brought along a selection of their beautiful Italian scarves, handbags and leather giftware.

Marie Curie have recently launched their Support Phone Line. If you or your family are affected by a terminal illness and looking for support you can call the Marie Curie Support Line, on 0800 090 2309, visit the Marie Curie Website at [mariecurie.org.uk/help](http://mariecurie.org.uk/help), or join the online community at [community.mariecurie.org.uk](http://community.mariecurie.org.uk)

The new confidential Support Phone Line is open from Monday to Friday 9 am to 5 pm



Commercial  
Commercial Property  
Litigation  
Employment  
Wills  
Trusts  
Probate  
Personal Injury  
Conveyancing  
Crime  
Family & Divorce

**01925 231000**

[info@fdrlaw.co.uk](mailto:info@fdrlaw.co.uk)

Warrington  
Stockton Heath  
Frodsham

[www.fdrlaw.co.uk](http://www.fdrlaw.co.uk)



*Celebrating our 15 year anniversary*  
With the NEW next125 range of kitchens!

**JD Kitchens**

- ✓ Luxury German & UK Kitchens
- ✓ Family Business
- ✓ Est 2001
- ✓ Backed by KBSA Consumer Protection Scheme



**Visit us at:**

4 Gorsey Lane,  
Warrington  
WA1 3PU



**01925 636997**

[www.jdkitchens.co.uk](http://www.jdkitchens.co.uk) | [sales@jdkitchens.co.uk](mailto:sales@jdkitchens.co.uk)







# Rain fails to dampen

TORRENTIAL rain failed to dampen spirits at Lymm village's annual Dickensian Festival.

Lymm Runners completed their annual Santa Dash ahead of the parade which involved hundreds of local school children and community groups, with many more lining the streets in the village centre.

The Mayor and Mayoress of Warrington Cllr Geoff and Mrs Jean Settle joined proceedings along with Parish Chairman Cllr Sheila Woodyatt and her consort husband Neville, who enjoyed hospitality provided by the Lymm Hotel.



Top left: Lymm May Queen 2015 Rebecca Chapman and Rose Queen Elizabeth Nelson.

Above: Lymm Hotel Manager Jamie MacDonald welcomes the Civic guests.

Left: Town Crier Peter Powell and Festival Chairman Steve Harper



**For more pictures**

**Nancy's deli**

*The perfect gift for Christmas*

We offer a selection of local products ideal for making hampers for a special gift

Including local cheese, jam and chutney, chocolates and locally brewed beer

10 Bridgewater Street, Lymm - 01925 756829 - nancysdeli.co.uk

**CRANSLEY SCHOOL**

**Open Day**

13th January, 2016. 1.30 p.m. until 3.30 pm

Come and visit Cransley School, one of Cheshire's leading Independent Day Schools for boys and girls aged 3 to 16. Providing exceptional education in a happy, caring environment where individuals really do matter.

Bursaries and scholarships available.

Cransley School, Belmont Hall, Great Budworth, Cheshire, CW9 6HN

Or book an appointment via the School Office on 02606 891 747 or email [admin@cransleyschool.org.uk](mailto:admin@cransleyschool.org.uk)

[www.cransleyschool.org](http://www.cransleyschool.org)

*Where individuals matter*

**Bears Paw**  
Country Inn & Restaurant

Jason, Melanie and staff wish all their customers a **HAPPY NEW YEAR!**

Don't forget the Early Bird menu  
Mon to Fri 6pm till 7pm and Sun 5pm till 7pm  
**2 Courses £10.95 3 Courses £13.95**

Monday Evening. Two Steaks and Bottle of Wine £27.95  
Tuesday Evening. Burger Night with Chips & Coleslaw £7.95

Tel: 01925 752573 | Warrington Road, High Legh, WA16 0RT

Follow us on Twitter - @PawBears

**Lymm Osteopathic Practice**  
— Established 1979 —

**SUZETTE PULMAN, N.D. M.R.N. D.O.**  
Registered Naturopath & Osteopath

**DARREN HAYWARD, B.Sc. (Ost)**  
Registered Osteopath

*We are both registered with The General Osteopathic Council (G.O.Sc.)*

Open Monday to Saturday  
**Tel: 01925 752264**  
The Rise, 16 Grammar School Road, Lymm WA13 0BQ  
(Easy Access Road Parking)  
*Registered with all major insurance companies*



# en Christmas spirits



Far left: Santa Dash.

Above: Statham Primary.

Left: Bruce Thomas and Chris Adamson place a Christmas Wreath on the 1893 steam traction engine



## WILLIAM H. LILL + Co.

Your local solicitor  
specialising in:-

Conveyancing  
Wills & Probate  
Accident & Personal Injuries  
Divorce & Family Law

A friendly service for  
all your legal needs

Telephone: 753170 / 755668  
9 The Cross, Lymm WA13 0NY

es and video visit: [www.lymmmlife.co.uk](http://www.lymmmlife.co.uk)

## PARKVIEW CAR SALES



We need your clean, low mileage, family cars

# URGENTLY

Best prices paid

Call Peter Now on:  
**01925 575737 / 07957 545479**

Formerly of: Park Garage, Lymm

Now: **Chapel Walks Garage**

**23 Padgate Lane, Warrington**

(MOT AND SERVICE CARS COLLECTED FROM LYMM)

## THE LYMM HOTEL



## CONFERENCE OFFER

The Lymm Hotel offers a peaceful and idyllic location, perfect for a variety of business events.

- Close to transport links, just off the M6 and M56
- Conference facilities for up to 120
- Available for exclusive use
- Free WiFi for all business guests and delegates

Day Delegate rate available from £25 per person

For further information, please call  
0344 879 9047 or email  
[general.lymm@macdonald-hotels.co.uk](mailto:general.lymm@macdonald-hotels.co.uk)

Whitbarrow Road, Lymm, Warrington, Cheshire, WA13 9AQ  
\*Terms and conditions: Children prices apply under 7 years of age.



[WWW.MACDONALDHOTELS.CO.UK/LYMM](http://WWW.MACDONALDHOTELS.CO.UK/LYMM)



# Plans revealed for Brazilymm '66

WHEN new manager Jamie McDonald arrived at the Lymm Hotel earlier this year one of the first things he found tucked away in a drawer was an envelope containing a unique collection of photographs of the Brazilian football team during their stay for the 1966 World Cup.

The pictures, which were copies, had been sent to the hotel nearly ten years ago by local collector Neil Perkins who had purchased them at auction.

Jamie, who grew up locally, was already thinking about how best to show and share the pictures when he received a chance visit from neighbours Su and Alan Williams.

"I had heard about the exciting plans for a Heritage Centre so when I discovered that Alan and Su were part of that team it seemed like the perfect opportunity for the hotel to get more involved with the community," said Jamie.

Alan added: "We quickly realised that next year will be the 50th anniversary of the visit and would be the perfect time for an event. I tried ringing the person who had sent the photos all those years ago and to my amazement got straight through. After apologizing for taking a decade to ring back I explained what we would like to do and Neil was immediately enthusiastic and supportive."

As a next step Alan posted a few of the pictures on the Heritage Centre's facebook page facebook.com/lymmheritage and was



*Photo courtesy of Neil Perkins*

staggered as one post racked up nearly 6,000 hits. "We had a huge response with so many people wanting to share their memories of what was clearly a landmark event for the village."

Plans are now in a place for a four day exhibition from Feb 21st-24th – provisionally titled Brazilymm '66 that will include images and video from a range of sources. Reminiscences of local people will also be an important aspect of the show. The exhibition will also include displays of 1966 World Cup memorabilia from World Cup Willy souvenirs to

official's blazers – much of it drawn from the private collection of Neil Perkins – as well as pictures of the village itself as it looked at the time. It will open on Sunday 21st February with a ticketed event that will include a sixties style buffet and live music. Customers will even be able to buy a pint using a 1966 two-bob bit as part of their ticket. The hotel are also hoping to tempt a sporting hero along to open the event.

Manager Jamie summed it up by saying: "We are really pleased to be able to give our support to this great idea which we feel sure

will help raise money for the new heritage centre as well as placing the hotel back at the heart of the community where it clearly was in 1966 and where it really belongs again today."

Maybe you have a World Cup memory or picture to share; or perhaps would like to be involved and become part of the heritage centre team. If so then contact the centre via the website [www.lymmhc.co.uk](http://www.lymmhc.co.uk) or call Alan on 01925 754080 who would also be interested to hear from anyone who can lend a display cabinet for the exhibition.

**JOIN TODAY AND RECEIVE VOUCHERS WORTH £300!**

- Cardio and resistance gym with state-of-the-art PULSE equipment
- A friendly and sociable club
- Swimming lessons
- Swimming pool, steam room, sauna and whirlpool
- Exercise classes including Spinning and Boxercise
- Personal training available
- Tennis court

**Pop into the health club or give us a call and quote 'Lymm health'**



01925 730 000 | [parkroyalleisuresales@QHotels.co.uk](mailto:parkroyalleisuresales@QHotels.co.uk)  
Stretton Road, Stretton, Warrington WA4 4NS  
[QHotels.co.uk](http://QHotels.co.uk)

**THE  
PARK ROYAL**  
Warrington,  
Cheshire



# Lymm High School "Save the Rhino" Campaign

MORE than 500 Lymm High School students created a "Human Rhino" as part of their Afritwin Rhino Awareness campaign.

Afritwin is a charity project which links schools in the UK with schools in both the affluent and poorer townships of South Africa, and has been run by a small group of staff and students at Lymm High School since 2003. A significant part of the project involves a group of staff and students visiting the partner schools in South Africa every two years. There they teach

and work to improve conditions within the schools.

This year, as part of the Afritwin project students have been aiming to raise awareness of the declining population of the rhino species. To do this, Lymm High School worked with Kestrel Cam Professional Aerial Filming & Photography to create an exciting campaign video. Over 500 students gathered to create the "Human Rhino", which had been strategically planned and sketched by a team of students from the Afritwin project. Kestrel Cam

used a drone camera to film the developing and vanishing rhino.

The outcome was extremely impressive, with the footage being used to create the campaign video, which was edited by the students. Their video "Human Rhino", can be viewed by visiting the school website [www.lymmhigh.org.uk](http://www.lymmhigh.org.uk) or via the Lymm High School YouTube channel, where it has already had over 1000 views.

Chris Burnett, Afritwin co-ordinator at Lymm High School said, "I was extremely moved by a



talk given to our group by Marion Geiger, a professional artist and "Rhino Disharmony" campaigner during our visit to South Africa in 2014. I hoped to be able to help her campaign to save the rhinos from extinction by raising awareness of the issue. I am delighted with the result and hope that our film goes a little way towards saving this unique animal."

## New Headmistress appointed

CURRENT Deputy Head at Withington Girls' School, Mrs Sarah Haslam, has been announced as their eleventh Headmistress.

Mrs Haslam will take up her new post in September 2016, succeeding Mrs Sue Marks, who is to retire at the end of the academic year.

Withington's Chair of Governors Mrs Elisabeth Lee, said that the appointment of Mrs Haslam to the role had been a unanimous decision taken after a rigorous and searching interview process.

Mrs Lee commented: "Sarah Haslam will be a very worthy successor to the two outstanding Heads under whom she has served as Deputy."

Mrs Haslam joined Withington as a teacher of English in 1995 and went on to take a variety of whole school roles, including Head of Years 10 and 11 and, since her appointment to the role of Deputy Head in 2007, lead responsibility for Pastoral Care and Safeguarding. She is also an Independent Schools Inspector, a Teacher Induction Panel lead trainer and has been a Governor at another school.

Mrs Haslam has a keen interest in the Arts and also loves the outdoors, particularly hill walking and sailing. She said, "I am thrilled to have been appointed Headmistress of our wonderful school and am very much looking forward to taking up the role."

Mrs Lee paid tribute to Mrs Marks as 'an outstanding headmistress' saying she had built on the success of her predecessors and had taken the school to a new level.

"The Governors are confident that Mrs Haslam will maintain this momentum whilst safeguarding the unique culture and ethos of Withington Girls' School."



# "What we learn with pleasure we never forget"

Alfred Mercier



## 2016 ENTRANCE EXAMINATIONS

For Year 7 entry:

Monday 11th January 2016

For Years 3-6 entry:

Saturday 16th January 2016

**NEW PURPOSE-BUILT,  
EXPANDED JUNIOR  
SCHOOL OPENED  
SEPTEMBER 2015**  
Additional classes for  
girls in Years 5 & 6

To arrange a tour of  
the School please call  
0161 224 1077



**Withington**  
GIRLS' SCHOOL

Find out more by calling 0161 224 1077  
Wellington Road, Fallowfield, Manchester M14 6BL

**wgs.org**

Means-  
tested  
bursaries  
now available  
from Year 5  
upwards



# New Netto store receives a warm welcome

LYMM'S new Netto store was well received by the local community when it officially opened with no sign of the controversy which greeted initial news of the discount supermarket coming to the village.

Mayor of Warrington Geoff Settle was on hand to help with the opening ceremony along with pupils from Statham Primary School.

Netto Lymm's first customer was Lynne Isherwood, who is pictured cutting the ribbon with Netto UK Managing Director, Morten Moberg Nielsen and Store Manager, Nathan Wilson.

The store, built on the site of the former Rushgreen Road Service Station, has a product offer that combines the best of the low-price discount model with a unique Scandinavian twist.

The 12,000 sq ft store is the tenth store to be launched in the UK since the first store opened its doors in Leeds in November 2014 as part of a trial in a joint venture

between Sainsbury's and Dansk Supermarked, Netto's parent company.

The store, which has created 20 jobs, represents a complete departure from the format that left the UK market in 2010, with a fresh design based on the latest Netto stores in Denmark. The range of over 2,000 products has been created especially for UK customers to give a new kind of offer to the discount sector. In addition to these products, Netto offers 60 'Spot Deals' – which means that when they're gone, they're gone – each week on food and non-food items.

It has an in-house bakery, which offers fresh Danish breads and traditional Danish pastries, including the Copenhagen (39p), a delicious almond and poppy seed pastry which is to the Danes what the croissant is to the French. Every day, fresh meat and produce is delivered to the store; all fresh meat is British and Netto offers seasonal British fruit and vegetables sourced



at the highest quality for a great price.

Netto also has own-label brands that have been especially created for the UK market called 'Premier' (high-end) and 'Easy' (everyday items), as well as established brands from Netto's existing portfolio, such as, 'Asian Kitchen' and 'Mex & Co'. The store will also offer around 100 of the most popular brands that people expect to buy in their weekly shop and stylish non-food products sourced from Denmark and around the world.

Morten Moberg Nielsen, Managing Director at Netto UK, said: "We are excited to be opening a new store in Lymm and to become part of the local community. We look forward to welcoming new customers and to bring a taste of Scandinavia to the area. At Netto, we think that everyone should be able to buy nice things, in a nice shop, at a nice price. People should come and have a look – I think they will be impressed."



## Lymm councillor elected Lib Dem chairman



LYMM parish councillor Ian Marks has been elected chairman of Warrington Liberal Democrats.

The former leader of Warrington Borough Council, who lost his borough seat at the elections in May, was elected at the Lib Dem annual meeting.

Elected vice chairman was Ryan Bate, who stood as the Parliamentary candidate at Halton in the general election.

Cllr Marks said: "We are delighted that since the May elections lots of new people in Warrington have joined the Party. Many of these are young and already taking an active part in our campaigning. This bodes well for the future."

Guest speaker at the meeting was Greg Mulholland, the Liberal Democrat MP for Leeds North West.

He said: "The country is crying out for an effective and progressive opposition and it is up to the Liberal Democrats to fill the gap."

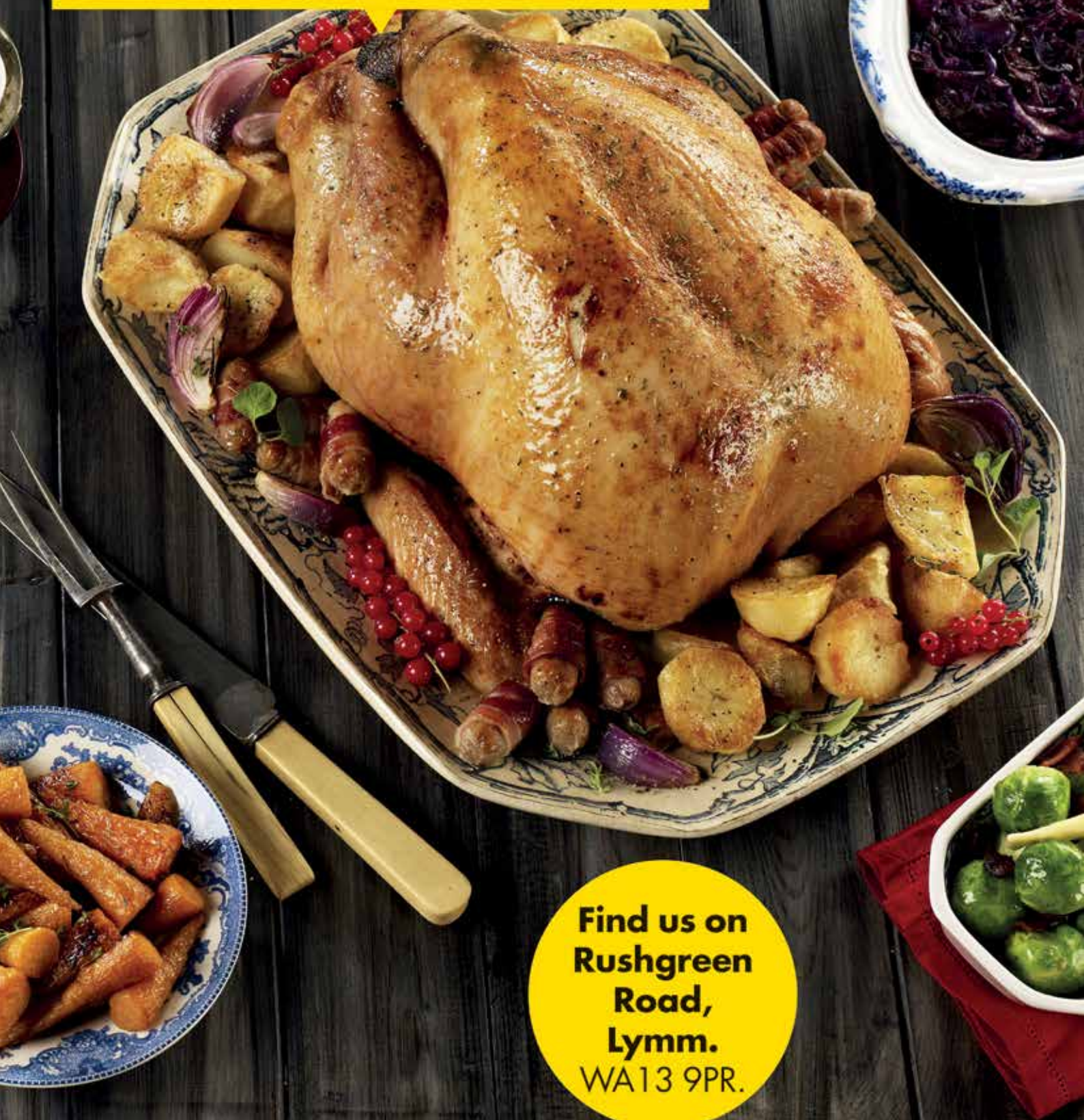
Mr Mulholland said, "It was Liberal Democrat peers in the House of Lords who led the way in opposing the reduction of tax credits. Labour peers just sat on their hands. Labour MPs are preoccupied with undermining their own leader rather than mounting an effective opposition to the government."



# We love Lymm.

Thanks to everyone who has made us feel so welcome.

**Netto**   
Scandinavian for value



Find us on  
Rushgreen  
Road,  
Lymm.  
WA13 9PR.



**Lymm SHUTTERS & BLINDS**  
Reliable. Professional. Affordable.



We offer a wide range of beautifully made bespoke Plantation shutters, as well as all types of Blinds and Curtains.



We also offer a full Interior Design service for those that don't know where to start. This can include Carpets, Curtains, Wall paper and even advice on furniture, lighting and all things between and we can do this with the confidence that 25 years experience brings.

Call or email us today for a free consultation

T: 07738 934678 E: Neil@lymmshuttersandblinds.co.uk  
www.lymmshuttersandblinds.co.uk

**Tenants and Landlords wanted**

**8% management charges!**

**LANDS LETS**



**Tel: 01925 757555 / 600101**  
**www.landslets.com**

**skipthetips.org**



**DONATIONS URGENTLY REQUIRED**

Clothes, Shoes, Bags etc (any condition)  
Furniture, White Goods, Bric-A-Brac, Toys, Electricals etc  
**Free House Clearance/Collection Service**  
Please visit our shop and grab a bargain!

**07854 159 407**  
Unit 4, Chaise Meadow, Lymm, WA13 9EL (Behind the Co-op)  
Visit skipthetips.org or Email info@skipthetips.org

**EXCHANGE YOUR GOLD AND SILVER FOR INSTANT CASH**



All items of jewellery accepted

**Did you know...?**  
We accept silver jewellery, cutlery, tea sets, spoons, cigarette cases, candlesticks, trophies, trays, medals, coins and pocket watches.

**ROLEX WATCHES WANTED! ANY CONDITION**

Open: Tuesday-Saturday: 10am - 5.30pm  
1 London Road, Stockton Heath  
(First floor entrance on Fairfield Road)  
**07544 486 621**

**CHESHIRE GOLD & SILVER BULLION DEALER**

**WELCOME TO THE IDEAL BUILDING COMPANY**




**Our mission is to deliver a high standard of building work at competitive prices and give complete client satisfaction every time.**

Our services include: Extensions & Conversions, Complete Refurbishments, Loft Conversions, Structural Works, Homes Offices, Kitchen & Bathroom fittings, Electrical, Heating and Plumbing works, Full Plan & Design Service and General Building work.

**For a FREE consultation please call**  
**01925 730888**

Urban Building Projects Ltd.  
410 Europa Boulevard, Gemini Business Park, Warrington, Cheshire, WA5 7TR  
Email: info@urbanbuildingprojects.co.uk Web: www.urbanbuildingprojects.co.uk



**aspire Computers Ltd**  
41 Manchester Road, Woolston, Warrington, WA1 4AE  
Tel: 01925 251145



Full range of PC support for home / business users




We now offer specialised support for MOT stations.  
**Are you ready for the change over?**

**Contact us for our latest offers**  
or if you would like adding to our email offers list please email  
sales@aspire-computers.com

**To get your business on track and in the 'Pink' contact James Bryan on 01925 631592**



**Little Belters** **FREE TASTER SESSION NO AUDITION**

For kids who love to sing!

Taught by professional singers • Group vocal tuition  
Unique twists on popular songs • Public performances • Full-on fun!

Every Thursday at 4.45pm at the Youth and Community Centre on Bridgewater Street

Now Recruiting in Lymm

Just call  
07779 668 204  
for further information

@LittleBelters f /LittleBelters  
www.littlebelters.co.uk

# New Book Tells the Story of a Victorian Childhood

A NEW book telling the story of a Victorian Childhood in Lymm has been written by local resident Alan Williams – assisted by local illustrator Helen Weston – with proceeds from sales going towards a new heritage centre planned for the village.

Until recently, Alan, who volunteers at Statham Community Primary School and Helen, who is part of the team at the Little Foxes after-school club next door were on no more than nodding terms at the end of a busy afternoon at Statham School.

But when Alan had the idea of writing a children's book and set about looking for a suitable illustrator he soon discovered that Helen has another facet to her career. Helen, who is regularly in demand for her art work has a first class honours degree specialising in illustration.

She took away a draft of the story and was immediately enthusiastic. "It's a touching tale that I think both children and adults will really enjoy – especially at Christmas," said Helen. "Even as I was first reading it I could see the possibilities of how I would like to enhance the story with illustrations."

Alan explained: "Ever since moving to Lymm I have been interested in the lives of the hundreds, even thousands of people who worked in the fustian cutting industry in the village – particularly during the Victorian period. I had read the stories described in the History Society's leaflets but also a fascinating 1863 Government Commission report containing dozens of interviews with people in Lymm. At that time there were over a hundred children in the village under the age of thirteen working twelve hours a day or more in this demanding trade. I started with the idea of a factual account but in the end decided that it would be more interesting to tell the wider story of a nine year old growing up in Lymm at that time. I am delighted at how Helen has evoked that period with her illustrations in a style that will also appeal to children today."

Hannah and the Ruby Glass, set loosely in Lymm in the 1870's, tells of a young girl's adventures over two days leading up to Christmas as the adults around her try to decide for her what her future will be. Throughout the story she is fascinated by a ruby red glass bearing a mysterious message which she sees in a village shop window. In the best tradition of mysteries it is eventually solved.

It promises to be a popular local Christmas present for those who like to give gifts with a local twist. The book will be on sale at Laura's Choice and Nancy's Deli in Lymm, Waterstones in Warrington and Abacus Books in Altrincham and also on Amazon or alternatively contact Alan on 01925-754080 or via the Heritage Centre website [www.lymmhc.co.uk](http://www.lymmhc.co.uk). The book is priced at just £5.99 with £2 from every copy of the first edition of 250 going toward Heritage Centre funds.



## Disabled Riding Group back in Lymm

CAMSLEY Grange Riding For The Disabled Group is now back in Lymm after a while away outside the area and is now based at Lymm Riding School on Spring Lane.

The group hold rides on Monday and Wednesday evenings between 6pm and 8pm. Their horses and ponies provide therapy, achievement and enjoyment to children and people of all ages with a wide range of disabilities.

Volunteer Helen Sharp said: "Our group is run entirely by our fantastic team of volunteers. If you would like some information about how you can help whilst experiencing the joy and satisfaction of being part of our team, please contact us via our website: [www.camsleygrangerda.org.uk](http://www.camsleygrangerda.org.uk)"

From left, disabled rider Gus Renshaw, with young leaders Daisy Sharp and Max Brown.



## New Year - New You



The  
MakeUp  
Clinic

- Unique MakeUp Lessons
- Special Occasion MakeUp
- Bridal MakeUp
- Gift Certificates

The North West's Leading MakeUp Clinic

[www.themakeupclinic.co.uk](http://www.themakeupclinic.co.uk)

## Millercare Mobility Specialists



Ellen Riser Recliner  
with Waterfall Cushions  
in Spray Jute



Lilburn Riser Recliner  
in Herringbone Jute

Recliners Start  
from £599 with  
FREE Home Demo  
includes  
3 year warranty

1 Kingsway North, Manchester Road, Warrington WA1 3NL  
Telephone: 01925 251212 | [www.millercare.co.uk](http://www.millercare.co.uk)



## Round Table bonfire lights up Lymm

LYMM and District Round Table's annual bonfire raised another hugely impressive amount for charity, raising £12,000 in total.

The popular event at Lymm Rugby Club featured two fireworks displays, a range of food, refreshments and fairground rides. Lymm Ladies Circle also raised £1300 for charity by serving up some warming beverages.

Bonfire organiser and Round Table member Gary Parsons said: "We are eternally grateful to everyone who came along to support the event. Now on to the important part – deciding who to donate the proceeds to."

If you would like to nominate a charity to be considered for a donation email [charity@lymmroundtable.co.uk](mailto:charity@lymmroundtable.co.uk)

### Obituary

## Allan Bate



THE funeral has taken place at St Mary's Church, Lymm of Edward Allan Bate, aged 90, of The Brow, Lymm who died on October 31.

Allan was born in Lymm and attended Statham and Lymm schools. He sang in the choir of St Mary's Church where he attended regularly throughout his life in Lymm.

He worked as a foreman fitter at Laporte Chemicals until retiring at 65 and then lived with his wife, Muriel, at Dalgety Bay, Fife, until returning to Lymm in 2008.

He is survived by his wife, his daughter Christine, sons, Allan and Andrew, nine grandchildren and six great grandchildren.

Funeral arrangements were by John Burrows and Sons of Lymm

Established 1878

**John Burrows & Sons**  
Independent Family  
**Funeral Directors**

**MG & J Tandy**

16 Higher Lane, Lymm, WA13 0AP  
Chapel of Rest, Mill Lane, Lymm, WA13 9SE  
**Tel: (01925) 752501**

Golden Charter  
Funeral Plans

[www.johnburrowsandsons.co.uk](http://www.johnburrowsandsons.co.uk)

### CLASSIFIED

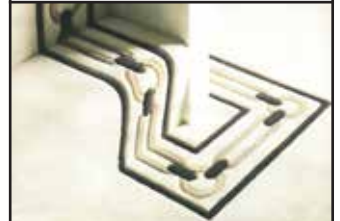
#### ACCOUNTANCY & BOOKKEEPING

**arleys**  
freelance and  
contractor accounting  
keeping it simple...  
**01925 598499**  
[www.arleys.co.uk](http://www.arleys.co.uk)

**Bookkeeper/Accountant.** Licensed for maintaining financial records, VAT Returns, Payroll Service, Management Accounts, SAGE Software Consultancy. **Contact: 07815 617914.** (15/16)

#### CARPETS, CURTAINS & INTERIORS

Paul Bains  
Flooring Solutions Ltd



- CARPETS - WOOD - LAMINATES -
- DECORATIVE VINYL FLOORING -
- FREE CHOOSE AT HOME SERVICE -

101 Bucklow Gardens, Lymm WA13 9RN  
T: 01925 748549 M: 07973 376224  
E: [paulbainsflooring@msn.com](mailto:paulbainsflooring@msn.com)  
[www.paulbainsflooringsolutions.co.uk](http://www.paulbainsflooringsolutions.co.uk) (15/16)

#### BUILDING SERVICES

**BRICKLAYER AVAILABLE** for garden walls, pointing etc. **Tel: 01925 755441 Mobile: 07966 491624** (15/16)

#### CARPET CLEANING

**A1 STAINBUSTERS:** Fully guaranteed carpet and upholstery deep dry cleaning. Clean & dry in only ONE hour. Leather, curtains cleaned in situ. Quotes for both commercial and domestic. **Contact the local expert John Latham on 01925 852088 or 07765 314080** (14/16)

**SIMPLY THE BEST CARPET CLEAN YOU** will ever have. Cleaners UK Ltd. Est. 27 yrs. Have your carpets & sofas beautifully deep cleaned leaving them fresh smelling & colour restored. Latest & best methods. Dry/steam. Leather cleaning, oriental rug specialist. Professional, reliable & affordable. **For more info call Neil Riley on 01925 264989 / 07831 336060 [www.cleaners-uk.net](http://www.cleaners-uk.net)** (17/16)

#### CARPETS, CURTAINS & INTERIORS

**BLINDS, CURTAINS, CARPETS,** plantation shutters, paint, wallpaper. All popular brands available, including harlequin, PT, Little Green Point co, F&B, Cormar and Victoria Carpets. **Xross Interiors, 16 The Cross, Lymm Tel 01925 758298 or email [helo@xrossinteriors.co.uk](mailto:helo@xrossinteriors.co.uk)** (13/16)

**Lymm Festival Winter Warmers**  
[lymmfestival.org.uk](http://lymmfestival.org.uk)

**Blues Night:** With Rebecca Downes and her Band  
Friday 5th February 2016  
8:15pm (Doors 7:45pm)  
Lymm Golf Club|£11

**Film Night:**  
The Good Dinosaur **PG**  
Thursday 18th February 2016 (Half Term)  
5:00pm (Doors 4:30pm)  
United Reformed Church, Brookfield Road|£4

**Suffragette** **12A**  
Thursday 18th February 2016  
8:00pm (Doors 7:30pm)  
United Reformed Church, Brookfield Road|£7

**Folk Night:** With Greg Russell and Ciaran Algar Plus Calico with Compere Kathy Runswick  
Friday 4th March 2016  
8:00pm (Doors 7:30pm)  
Lymm Golf Club|£11

**Tickets on sale now**  
Visit [lymmfestival.org.uk](http://lymmfestival.org.uk)

**Tickets Available From [lymmfestival.org.uk](http://lymmfestival.org.uk)**  
or Lymm Electric, Bridgewater Street, Lymm, WA13 0AB  
Connect with us on Facebook and Twitter  
Search: **LymmFestival**

**CANVAS**  
COLOUR PRINTS  
500mm x 500mm  
**£24.70**  
+VAT

**50 A3 POSTERS**  
**£24.70**  
+VAT

**100 BUSINESS CARDS**  
**£2.47**  
+VAT

**50 WEDDING INVITATIONS**  
FULL COLOUR  
**£24.70**  
+VAT

**PRINT PROBLEMS SOLVED!**  
BANNERS • STICKERS • MAGAZINES  
**FLYERS • POSTERS**  
**OFFICE STATIONERY**  
**CUSTOM PRINTS**  
FOLDERS • CARDS • SIGNAGE

**24seven**  
design & print ltd

info@247print.net • 01925 240247  
**The New Media Centre • Old Road**  
**Warrington • WA4 1AT**  
the **NEW MEDIA** centre

Artwork needs to be supplied in a print ready format. Payment must be made when ordering.



## CLASSIFIED

## FREEPHONE 0800 955 5247 to advertise

## CLEANING SERVICES

**arleys angels**

- Spring Clean Specialists
- Presenting your home for sale
- Moving house
- After building work cleans

**01925 266834**  
... because you're worth it!

(G1)

**SIMPLY THE BEST CARPET CLEAN YOU** will ever have. Cleaners UK Ltd. Est 27 yrs. Have your carpets & sofas beautifully deep cleaned leaving them fresh smelling & colour restored. Latest & best methods. Dry/steam. Leather cleaning, oriental rugs specialist. Professional, reliable & affordable. **For more info call Neil Riley on 01925 264989/ 07831 336060 www.cleaners-uk.net**

(J1/16)

## ELECTRICAL CONTRACTOR

**TRUST PROPERTY ELECTRICAL SERVICES.** NICEIC Part P Approved Contractor. All Electrical work undertaken. Inspection & Testing & PAT Testing. All work certified & guaranteed. **Call Tim on 07754409906 or 01925 601055**

(J3/16)

## EQUESTRIAN

**LYMM RIDING SCHOOL.** For all ages and abilities. Friendly atmosphere, group/private lessons priced from £12 on well schooled Horses/Ponies. Pony days and parties available. For more details contact Rebecca Bennett (Reg All) **Tel: 01925 750435. Mob: 07778 866006.**

(J8/16)

## EQUESTRIAN SUPPLIES &amp; ANIMAL FEEDS

**STABLES SADDLERY.** Est 1964. Good stock of all equestrian supplies and animal feeds. Also storage available for trailers, caravans and household goods etc. **Tel: Barbara Williams on Lymm 752762.**

(J6/16)

## FARMING / FIELD SERVICES

**NEIL WORTH CONTRACTING FOR** hedge trimming & paddock/small field work. Also septic Tank emptying. Scrubland clearance. Specialist in Japanese knotweed spraying. **Tel: 07973 242808. www.nworthcontracting.co.uk**

(N10/16)

# Lymm Life

offers a cost effective local **LEAFLET DELIVERY** service at competitive prices. We can also design and print leaflets with our in-house design team.

Call us now on  
**0800 955 5247**

## GARDENING SERVICES

**Beechwood Industries Ltd**  
Garden management solutions

- Garden Maintenance
- Lawn Care
- Landscape Design
- Construction
- Paving
- Tree Surgery
- Free Assessment
- Free Consultation

Contact us on:  
**07749 253 308**  
**01925 860544**  
www.beechwoodindustries.co.uk

(G1)

**JDS**  
LANDSCAPE & GENERAL BUILDING SERVICES (LYMM BASED)  
Garden Design • Driveways  
Patios • Garden Walls • Fencing  
Decking • Resin Bond Driveways  
See website for examples  
**Tel: 01925 754883 Mob: 07515 967735**  
www.jdscreate.com

(J4/16)

## GARDENING SERVICES

**JP LANDSCAPES**

We are approved & recommended by Fenchurch  
For confirmation call 0800 858 9961 and choose option 4

- Block Paving - Tarmac
- Slabbing - Driveways
- Patios - Graveling
- Brickwork - Steps
- Fencing - Decking
- Power washing - Turfing
- Driveway Repairs

For a FREE no obligation quote please call  
**0800 858 9961 or 01925 393 188**  
or send your request on  
**07818 385 384 / jplandscapes56@gmail.com**

Valley Avenue, Warrington, WA2 8AY

(G1/16)

## GATES &amp; FENCING

**Village Gates**  
Manufacturers and installers of quality timber gates  
**villagegates.co.uk**  
For free quotes and advice call  
**01925 552322**  
New Workshop and Showroom at:  
8a Trident Business Park, WA3 6AX

(J7/16)

## HANDYMAN

**Handyman Services**  
Home, Office & Garden

Internal and External Painting • UPVC Window and Door Repair and Replacement  
Mechanism/Lock Changes • Soffits and Fascias  
Gutter Cleaning, Repair and Replacement  
Flagging • Fencing • Patios • Jet Washing  
All Garden Work • All DIY  
Call today for a FREE quote

**Tel Neil: 01925 757905 (Lymm Based)**  
**Mob: 07813 201850**  
handymanserviceslymm@hotmail.co.uk

(J5/16)

## HAIR &amp; BEAUTY

**PROFESSIONAL MOBILE** hairstylist, creative cutting, colour/colour correction, including foiled highlights. **Tel: Lorraine 01925 755441 / Mob 0786 7910805.**

(J4/16)

## HOME SERVICES

**ATLAS**  
Your friendly local independent

**PEST CONTROL CHIMNEY SWEEPING**

Affordable, professional, guaranteed service.  
Fully insured, fixed prices - no surprises once on site!  
Discrete vehicles, no embarrassing signs  
**07999 487 925 / 01925 445 222**  
**www.atlas4u.co.uk**

(J6/16)

## HYPNOTHERAPY

**MICHAEL MAHONEY** clinical hypnotherapist for IBS, Stress, Anxiety and many other problems. Medical Research project experience, BUPA Service Provider. **For free information sheet please email** [TimelineServices@aol.com](mailto:TimelineServices@aol.com) **or ring** **01925-658322** **www.healthyaudio.com**

(G1)

## JOINERY

**S3 JOINERY**  
(Lymm based)

Joinery/Carpentry • Custom Cabinets and Built-ins • Kitchens • Decking  
Flooring • Property Refurbishment

No job too small. Free quote  
Fully insured and guaranteed  
**01925 694133 07590 470971**  
**www.s3joinery.com**

(J8/16)

## MORTGAGES

**INDEPENDENT MORTGAGE ADVICE.** For local, impartial and professional advice on all aspects of mortgages contact Darren Simpson at Infinite Financial Services on **08450 309099 (local rate) or 07708 975122.**

(J6/16)

## OPTICIANS

**ADCOTT OPTICIANS.** State of the Art opticians in the heart of Lymm Village. Comprehensive sight tests and a wide choice of spectacles tailored to you, whatever your budget. **01925 757075**

(J11/16)

## PAINTING &amp; DECORATING

**ANTHONY MASON PAINTER AND** decorator. Over 25 years experience. Neat, clean, reliable service. All aspects including papering, paint finishes, colour advice and furniture painting. **Tel. Tony Mason: 07962532811.**

(J4/16)

**BENJAMINS PAINTERS AND** Decorators. 20 years professional experience in commercial and domestic decorating, wallpapering, coving, interior and exterior work. **Telephone 07837 452514 or 01925 755198.**

(J12/16)

## PAYROLL

**WHY TRY TO BE A PAYE EXPERT?** Watkinson Black can provide a cost effective payroll service, releasing you to concentrate on your business. **For further details please phone: 01925 413210 or e-mail: info@warringtonaccountants.co.uk**

(G1)

## PLUMBING

**CL PLUMBING AND GAS SERVICES**  
Local honest plumber covering all aspects of plumbing and gas works. Boilers and central heating installed and repaired. Bathroom suites supplied and fitted. Cookers and fires fitted. Landlord gas safety checks. All plumbing emergencies - 24 hour call out. No job too small, OAP Discount rates. **Tel Craig 01925 819692 07851 405466 www.warringtonplumbingservices.co.uk**

(J2/16)

**Gas Safe Registered Engineer**

Andy Gas of Lymm, specialist in:  
Boiler upgrades, servicing, repairs to all domestic heating and gas appliances.  
For a professional service call Andy  
**07753 838129 or 01925 753712**

(J2/16)

## PRIVATE HEALTHCARE

**health ENRICH Private Health Care**

01925 871 842  
07801 656 919  
zoel@health-enrich.co.uk  
**www.health-enrich.co.uk**

(J3/16)

## RE-UPHOLSTERY

**Orchard Soft Furnishings**

RE-UPHOLSTERY  
CURTAINS • BLINDS

FREE MEASURING & FITTING

TEL: (01925) 756388  
**www.orchardsoftfurnishings.co.uk**

(J11/16)

## RUBBISH REMOVAL

**ALL TYPES OF RUBBISH REMOVED.** garages, attics, cellars. Reliable friendly service. 35 years experience and fully licensed. **Tel 07850 500652.**

(J3/16)

## TAXI / PRIVATE HIRE

**Frazer's of Lymm**  
Private Hire Service • Good local rates  
Reliable friendly service • up to five seater  
Airport • Station Schools • Business or pleasure for OAPs

**Contact Nigel on 01925 754426**  
**07812 674822**

(J3/16)

## TAXI / PRIVATE HIRE

**Horn's**  
Airport Transfer & Taxi Specialists  
**CALL MARTYN: 01925 751761**  
**MOBILE: 07881 786250**

(G3/16)

## TUITION

**PIANO & KEYBOARD LESSONS** in your own home. Experienced Music Teacher - all levels taught in the local Lymm area. Competitive Rates. **Tel: 01925 756189**

(J2/16)

## UPHOLSTERY

**BRIDGE FURNISHINGS. OVER 30 YEARS** experience reupholstering and repairing all types of upholstered furniture. Manufacturing fitted loose covers. Large selection of fabrics and cushion inners. **Call 01925 232484 or 07950 856227. 78 Warrington Road, Statham WA13 9BT.**

(N10/16)

## WINDOWS &amp; GLAZING

**NEIL COPELAND WINDOWS & Conservatories Ltd.** Specialist in uPVC double glazing windows, doors, porches, conservatories, also fascias and guttering. FENSA registered. All work guaranteed. **Tel: 01925 756138 / 07961 361550.**

(J2/16)

**DOUBLE GLAZING.** For all your glazing requirements units including failed and misted units, broken windows, mirror fixing. UPVC doors and window frames. Kite marked to B/S. Time served glazier with over 30 years experience. **SP GLAZING. For a friendly no obligation quote tel Sam Pendlebury on 01942 671859. Mob 07919 660296.**

(J10/16)

## MOTORING SERVICES

## CAR SALES

**PARKVIEW CAR SALES**

**We buy and sell QUALITY CARS**  
Best price paid

**Telephone Peter on**  
**01925 575737 / 07957 545479**

23 Padgate Lane  
Padgate, Warrington  
Cheshire, WA1 3RS

(G1)



# Banner & Co

Independent Residential Sales and Letting Agent



## LET US MAKE THIS YEAR YOUR YEAR TO MOVE



# 2016!



CALL TODAY  
FOR A FREE, NO  
OBLIGATION  
MARKET APPRAISAL



MORE PROPERTIES  
NEEDED FOR  
WAITING BUYERS



01925 753636 [www.bannerandco.com](http://www.bannerandco.com)

Please note that if you have already instructed another agent, we would advise you to check any agreement you may have to ensure you are not liable for more than one commission by instructing us as your agent