

**Lymm**

# Life

**FREE EVERY MONTH**

**June 2015  
Issue: 195**



**urban**

BUILDING PROJECTS LTD

**Residential & Commercial  
Building Specialists**

**Tel: 01925 730888**

[www.urbanbuildingprojects.co.uk](http://www.urbanbuildingprojects.co.uk)



## **Earthquake survivor launches charity appeal**

**Page 12**



**LYMM  
PARISH  
COUNCIL**

Approved by Lymm Parish  
Council as the official  
magazine for Lymm

**eden**

LANDSCAPING & DRIVEWAY  
SPECIALISTS

**Tom Morgan**

**01925 263125**

**07595 184312**

[www.eden-landscapes.co.uk](http://www.eden-landscapes.co.uk)

[info@eden-landscapes.co.uk](mailto:info@eden-landscapes.co.uk)

**Banner & Co**

Independent Residential Sales  
and Letting Agent

See our main advert  
on the back page  
for details

**01925 753636**

**Regular news updates at [www.lymmmlife.co.uk](http://www.lymmmlife.co.uk)**



# Editor's Comment



**Editor**  
Gary Skentelbery

**Production**  
Paul Walker

**Advertising**  
James Balme  
Freephone  
0800 955 5247

**Editorial**  
01925 623633

**Email**  
info@lymm.life.co.uk

**Websites**  
[www.lymm.life.co.uk](http://www.lymm.life.co.uk)  
[www.culchethlife.com](http://www.culchethlife.com)  
[www.frodshamlife.co.uk](http://www.frodshamlife.co.uk)  
[www.warrington-worldwide.co.uk](http://www.warrington-worldwide.co.uk)  
[www.warrington.tv](http://www.warrington.tv)

**Address**  
New Media Centre  
Old Road Warrington  
WA4 1AT

*Lymm Life is published monthly by Orbit News Ltd.  
The contents of this magazine are fully protected by copyright and nothing may be reprinted or reproduced without prior permission of the publishers.  
The publishers are not liable for any statement made or opinion expressed by third parties in this publication.  
Printed by TwentyFourSeven*

It was a pleasure to meet the new Principal at Lymm High School, Gwyn Williams and reassuring to hear him say "stability" is the key to future success.

My interview with Mr Williams can be read opposite.

His interim Tarun Kapur did a fantastic job in steadying the ship after a period of instability. Tarun was a great ambassador for the school and should be congratulated for the hard work and commitment he gave following what had been difficult times.

While there are still some unanswered questions about exactly what went on in the past – I think it is now time to look to the future.

Lymm High School has a proud history which was badly tarnished but now under new leadership it

can hopefully once again become an outstanding school we can all be proud of.

The high school is at the heart of the community and clearly very important to many people. A successful school, will produce successful students and success breeds success.

Here at Lymm Life we look forward to reporting on the many success stories at the school which is clearly keen to be part of the local community.

While on the subject of community, festival season is fast approaching with a packed few weeks of events and activities with Lymm May Queen and Lymm Festival.

The amount of voluntary work which has gone into staging this fantastic events is truly amazing

and we should never take them for granted – they are what help make Lymm unique.

I am sure both events will be fantastic and fingers crossed that the sun will be shining.

To all those who have given up their free time to help stage them – keep up the good work.

**Deadline for the July issue of Lymm Life is June 2**

**Do you want to reduce stubborn fat, cellulite, loose skin and wrinkles?**

**CHESHIRE Natural Health**

**Endermologie is a non-invasive, 100% natural and painless solution to these problems**

Please call to find out more  
Tel: 01925 730123

[www.cheshirenaturalhealth.co.uk](http://www.cheshirenaturalhealth.co.uk)  
Cheshire Natural Health, Beehive House, Tarporley Road, Stretton, Warrington

**N & J STANHOPE**  
**Coal and Log Supplies**

Best Quality Coal  
Smokeless Fuel  
Logs Supplied in Bags and Bulk  
Fresh Bacon and Eggs  
**Open 7 Days**  
Broomeage Farm  
Burford Lane, Lymm WA13 0SE  
Tel/Fax: **752830**

**NOW OPEN**

**GREAT COFFEE ON THE GO  
FRESHLY PREPARED SANDWICHES  
MOUTH WATERING SMOOTHIES AND SOUPS  
EAT IN OR TAKE OUT  
EVENING MENU\* FREE  
REAL ALE WIFI**

**1923**  
@THE OLD STATION HOUSE  
STATION ROAD  
IRLAM  
MANCHESTER  
T: 0161 222 1923  
@1923COFFEE  
/1923.COFFEE

**1923**  
@THE OLD STATION HOUSE  
WWW.1923.COFFEE



# Stability key to success at Lymm High School

STABILITY will be the key to success at Lymm High School says new Principal Gwyn Williams.

Mr Williams, who recently took up tenure at the school said: "The school needs stability and I want to move forward and turn it into a fantastic school again.

"There are some changes I want to make but first I will spend time

listening to the staff and parents and the wider community and get their views to mix in with my own experiences to establish what the main priorities are.

"It is clear the staff need a period of continued stability which they have had for the past couple of years.

"We can now start planning for

the future in a more structured way which can only help in building the type of school we want to build.

"I am not driven by Ofsted results but would expect an outstanding school to be delivered by results.

"The starting point is to build a fantastic school and work towards superb exam results for all students, with lots of extra-curricular activities underpinned by impeccable behaviour.

"Young people are always capable of achieving more and we need to ensure they are challenged and stretched in a positive way."

The former Wales school international hockey player has moved from Wallingford School in Oxfordshire, where he was deputy at a similar school in many respects to Lymm, where he was central to turning what was an underachieving school, into one with the best examination outcomes in Oxfordshire.

Previously Lymm was under the leadership of an interim executive principal, Tarun Kapur, from the Dean Trust.

Mr Kapur was drafted in following the suspension of former Head Teacher Angela Walsh, who eventually resigned.

During her period in charge the school faced a catalogue of issues including financial irregularities and the loss of 45 staff, causing a period of instability.



## Keate House awarded Investors in People

LYMM-based care home Keate House has been awarded the Investors in People Standard, demonstrating their commitment to realising the potential of their people.

Keate House is a family run company which employs 44 staff and has been providing 24 hour care for the elderly for 26 years.

More recently it has introduced specialised dementia care services at its fully adapted 46 bed care home, on Brookfield Road.

Investors in People is the UK's leading accreditation for business improvement through people management, and provides a wealth of resources for businesses to innovate, improve and grow, with a focus on good people making great business.

Steve Burrows, managing director of Investors in People North of England said: "This is a fantastic achievement for Keate House and I would like to congratulate the team on their success.

"We believe that good people make a great business and as a proven organisational development framework, Investors in People is designed to help organisations and their people to realise potential, enhance performance and meet goals. With their accreditation success, Keate House is certainly working to realise their people potential."

Malcolm Clarkson, director and owner of Keate House, said: "We are delighted to have been awarded Investors in People status once again. I am extremely proud of all the team who work so hard to ensure we not only deliver the best service to our residents but who make Keate House a great place to work also."

**Sophies Soft Furnishings**

Curtains • Roman Blinds  
Cushions • Tiebacks • Poles  
Tracks • Valances • Pelmetts

We design, make and fit to meet your exact requirements.

For free home visit or advice ring **Anne on 01925 754446**  
www.sophiessoftfurnishings.co.uk



## KEATE HOUSE CARE HOME

Quality person-centred care for your elderly loved one

Keate House is an independent family-run Care Home, specialising in providing Residential, Dementia, Respite and Day Care services for the elderly. Situated in the beautiful village of Lymm, our lovely purpose designed home is supported by our compassionate team, dedicated to providing only the best in quality person-centred care in our happy, stimulating and homely environment.

- Residential Care
- Respite Care
- Dementia Care
- Day Care

To talk to one of our Care Managers or to arrange a visit, call: 01925 752091 Brookfield Road, Lymm, Cheshire WA13 0QL  
Email: info@keatehouse.com Web: www.keatehouse.com

*Enriching life with quality care*






11.05.15





# What's On

in conjunction with Lymm Parish Council



**June 9**  
**LYMM PARISH COUNCIL**  
Lymm Parish Hall 7.30pm

**LYMM THURSDAY EVENING BRIDGE CLUB**  
Lymm Village Hall every Thursday 7pm

**MAPLE LODGE ART GROUP**  
Meet each Wednesday 9.30am - 12.30pm  
Oughtrington Community Centre, Lymm  
Details: 01925 755126

**ROTARY CLUB OF LYMM**  
Every Wednesday at Statham Lodge Hotel  
7.15pm for 7.30pm  
Contact the secretary 01925 650189

**LOVING HEARTS & HANDS**  
Knitting for charity at Lymm Methodist Church,  
2nd and 4th Thursday each month.  
1.30pm - 3pm. Details: 01925 753298

**MARKET LUNCHES**  
Eagle Brow Methodist Church  
3rd Thursday in the month  
Light lunches 12 noon till 2pm. All proceeds to  
Youth For Christ and YMCA Room at The Inn

**LYMM SCOTTISH COUNTRY DANCE CLUB**  
St Mary's Church Hall  
Second and fourth Fridays (Sept - May)  
7.30pm. Details: 753853

**GARDENING CLUB**  
Meet Third Wednesday of the month  
Lymm Baptist Church, Higher Lane. 7.30pm  
Visitors welcome. £2 includes tea and cake

**LYMM FLORAL ART GROUP**  
Lymm Village Hall  
Third Monday of the month (except August)  
at 7.30pm

**LYMM ORNITHOLOGY GROUP**  
Lymm Village Hall, 7.45pm for 8pm,  
Last Friday in the month (ex June & July).  
Guest speaker, Slide Show, Refreshments.  
Visitors welcome. First visit FREE.  
Also field trips. Details: lymmog.co.uk

**LYMM PHOTOGRAPHIC SOCIETY**  
Every 2nd and 4th Wednesday  
(ex July & Aug). 7.30pm  
Spread Eagle pub, Eagle Brow.  
Details: www.lymmphotosoc.org.uk

**LYMM WINE AND BEER CIRCLE**  
3rd Wednesday of the month, 8pm  
The Spread Eagle Hotel  
Details: 01925 604400

**LYMM CONCERT BAND**  
Rehearsals every Thursday evening  
United Reformed Church, 8pm.  
Details: 01925 752934

**THE VENUE, LYMM**  
Chess Club every Monday from 6pm,  
Open Mic Night every Tuesday from 9pm,  
free chinese meal and 2-1 cocktails  
every Wednesday, Live Music every  
Thursday and Saturday

**LYMM WI**  
Every second Wednesday, 2-4pm at Lymm  
Youth and Community Centre. Visitors  
welcome.

**LYMM BOOK CLUB**  
Second Thursday of the month 7.30pm,  
Spread Eagle, Eagle Brow. Details 01925  
752371

**LOW CARBON LYMM**  
Every second Monday of the month. 7.30pm,  
Spread Eagle. 07786 074741 all welcome

**To feature your event on this page please call our team on 01925 631592**



**LYMM PARISH COUNCIL**

Tuesday, June 9  
Lymm Parish Hall 7.30pm

## An evening of "feel good" music

MEMBERS of Lymm and District Chorus are to present an evening of "feel good" music at St Mary's Church, Lymm on Wednesday, June 24.

"With Cheerful Notes" is a concert featuring an eclectic mix of choral music, sacred and secular, from Handel's uplifting songs of praise to modern works including Bob Chilcott's "A Little Jazz Mass" and music by John Rutter as well as songs by Willy Russell and George Harrison.

Tickets are £8 (£5 concessions) and can be ordered by phoning 01925 266365 or emailing rvbrown@ntlworld.com

On Monday, June 22, The Bridgewater Singers are to present "Americana" at Lymm Methodist Church, Eagle Brow, at 7.30pm.

The concert will be a joyful celebration of US music from the days of the founding fathers right up to the 21st century.

This is a free event with a retiring collection in aid of Active Hope which provides support and adventure holidays to deprived children in Warrington.

## Charity concert

THE Castle Singers, a 60-strong mixed choir from the Wirral, will be in concert at Eagle Brow Methodist Church, Lymm on Friday, May 22 at 7.30pm.

Formed in 1994, the choir have raised more than £100,000 for various charities and have a varied repertoire, including sacred music, folk songs, songs from the shows and Gilbert and Sullivan.

The Lymm concert is aid of Action for Children and admission is £6, including refreshments, and can be paid on the door.

Members of the National Association of Choirs, the Castle Singers have performed abroad, featured in a film and have issued a CD. They perform at least four major concerts each year.

## Sun and success for Lymm Twin Town family exchange

LYMM Twin Town Society welcomed almost seventy French visitors from Meung-sur-Loire as part of the annual family exchange between the two villages.

The twinning is now 47 years old and joins voluntary member associations from both sides of the channel once a year following a year of socials and fundraising activities.

Almost 150 participants visited to enjoy a four-day itinerary. Full report and pictures next month

## We now offer FEYE 2 year old places at Rosebank & Naturegarten

Our Rosebank nurseries really are the "natural" place for your children to grow and develop.

For babies and toddlers in The Rosebank Centre and Nursery and After-School children in Naturegarten we give them the space to find their feet, explore the natural world and develop their minds.



- Excellent facilities and extensive grounds
- Forest day options
- Outstanding Parent Partnership
- Excellent child development
- Free FEYE sessions for 2-4 year olds
- Led by qualified teachers & graduates
- Full day care option

**Featured in Lymm Open Gardens 2015**  
**Sunday June 21st noon till 5pm**

The Rosebank Centre, 3 months to 3 years 01925 756900

The Rosebank Naturegarten, 2 to 13 years 01925 758959

[www.therosebankcentre.co.uk](http://www.therosebankcentre.co.uk)

High quality care at reasonable prices

**Grappenhall**  
DENTAL PRACTICE

Independent private practice

Private dentistry at NHS prices (conditions apply)

Now taking new clients due to expansion after 8 successful years

Easy parking/ground floor easy access including wheelchair

State of the art equipment / highest standards of cleanliness / cross infection control

Emergencies seen same day / no waiting lists

Late night opening Tuesdays until 8pm

Dr Andrew Brown and associates welcome new patients

Tel: 01925 210977 or 01925 481341

148 Knutsford Road, Grappenhall, Warrington WA4 2PW

[grappenhalldentalpractice@virginmedia.com](mailto:grappenhalldentalpractice@virginmedia.com)

[www.dentistswarrington.co.uk](http://www.dentistswarrington.co.uk)



## Thelwall Upholstery

**FOR THE MOST COMPETITIVE RATES IN THE AREA**

49 Knutsford Road, Grappenhall WA4 2NR

Call Sean on: 01925 604770 or mobile: 07799 228080

[www.upholsterywarrington.co.uk](http://www.upholsterywarrington.co.uk)

For all your upholstery needs

**SPECIALISTS IN:**

- Re-filling Cushions • Re-springing • Full Re-upholster
- Dining Furniture • Headboards

A wide range of sample books to choose from  
All at competitive rates

PHONE FOR YOUR FREE ESTIMATES





## The Premier Wood Furniture Specialists



Exceptional Choice

Stylish & Contemporary

Outstanding Service



**branches**  
The home of beautiful wood furniture

Wilderspool Causeway,  
Warrington WA4 6QP  
Open: Mon to Sat 9am-5.30pm,  
Sun & Bank Holidays 11am-4pm  
**Tel: 01925 241869**

**SUMMER SALE**

**25% OFF**

\*Starts 30th May

Brand new ranges now in-store!

11.05.15

Shop online: [www.branchesfurniturewarrington.co.uk](http://www.branchesfurniturewarrington.co.uk)



www.orbjewellery.co.uk

01925 759492

### *Jewellery for all Occasions*



**Jewellery Repair Workshop**

**Watch Batteries & Straps**

**Rhodium Plating**





**Insurance Valuations**

**Jewellery Cleaning & Re-sizing**

**Bespoke Design Service**



1 The Grove, Lymm (next to post office)  
Tue / Fri 9:30 - 5:00 Sat 9:30 - 4:00 (Thur till 7 pm)

# Save up to 40%

## on the cost of a full replacement kitchen...

Over 100 reviews on [checkatrade.com](http://checkatrade.com)  
Check us out!



- Trusted Reputation
- Less hassle, less time & less money
- Fitted kitchens or replacement doors & worktops
- Huge choice of doors, worktops, sinks, taps & appliances

## DREAM DOORS®

NEW LIFE FOR OLD KITCHENS

[www.dreamdoors.co.uk](http://www.dreamdoors.co.uk)

Visit our Showroom: 92 Knutsford Road, Grappenhall, Warrington WA4 2PJ

Call now for a Free Design quotation

## 01925 211308



Where reputation matters










## Pension Freedom

It's finally arrived, pension freedoms. On 6th April the new rules came into effect which now allow individuals to take unspecified amounts out of their pension pots. Including of course the whole pot, if that is what you wish to do. I noticed as I was watching breakfast TV on Easter Monday (6th April) that there were advertisements between the news bulletins on the new reforms suggesting things like 'invest in gold coins'. This is all carefully targeted at the public specifically to get you thinking. However, my advice to anyone over the age of 55, is to do nothing. Unless, of course, due to personal financial circumstances you need to make changes. Just let the situation settle down for a while. There will certainly be new products coming to the market over the next 12 months or so, many of these are still being developed. Therefore, if you do not need to take action, then don't is my advice.

I have heard many more people talking about property and buy-to-let as an alternative to investment in pensions. What you must consider with this type of venture is that it is just another alternative investment to a pension, therefore, it will not necessarily get you a better return and may, in fact prove to be a worse investment than your pension fund. There are other costs to take into account, for example valuation and Legal fees, Management/Letting charges, repairs and maintenance, rental voids, to name but a few. There are also many tax implications to take into consideration when investing in buy-to-let property not least the capital gains tax when you eventually sell the property.



Don Wernham,  
Financial Planner

If you have considered cashing in your pension to do something else with the funds, you have to be very careful of the tax implications of doing this. After the initial Pension Commencement Lump Sum (tax-free cash) has been taken then the rest of the funds are taxed at your marginal rate. This means you could pay 40% or even 45% on some of the money you are taking out. I saw a quote last week that a £70,000 pension pot could net down to £47,929 if taken as a single lump sum. There is also an added problem that HMRC are putting people on emergency tax codes until they have got the correct amount of tax calculated.

In summary, the new Pension rules are excellent. They will allow people more freedom and control over their own money. However, my advice to all is to take care when making your decisions. If you are unsure or do not understand, it is important to seek the right advice as a wrong decision could prove costly.

## TECHNOLOGY

Simple Solutions uses the latest technology to keep you updated, even when you are on the move or abroad, check out our website for more details.



## PENSIONS

• Pensions are changing due to the March 2014 budget and you now have a lot more options to consider\*

## INVESTMENTS

Our investment expertise will ensure that you have the most suitable investment to help you achieve your financial goals.

We use:

- Asset Allocation
- Risk Profiling
- Diversification
- Correlation

1st Floor, 67 London Road  
Stockton Heath, Warrington  
WA4 6SG

Tel: 01925 266628  
Fax: 01925 267043





# All set for The Shatliff Shuffle

THE annual "Shatliff shuffle" will be part of a "Lymm Festival" activity in aid of the Motor Neurone Disease Association.

The charity walk, launched in 2013, will take place in Lymm on Saturday June 27 from 2pm onwards.

Entry is £5 for adults and £2 for children and involves a five miles circular round trip stopping off for a refreshing beverage or a bite to eat whilst on the way.

Whether you are a group of friends or a family, you start at one of the pubs and collect a sticker on the way.

Choose to start from various pubs and walk at your leisure.

The event is organised by Hayley Shatliff-Smith, born and bred in the area

Hayley's grandfather, Terry Shatliff, suffered from Motor Neurone Disease (MND) a progressive disease that attacks the motor neurones, or nerves, in the

brain and spinal cord. This means messages gradually stop reaching the body's muscles leading to weakness and wasting.

MND can affect how you walk, talk, eat, drink and breathe. However, not all symptoms necessarily happen to everyone and it is unlikely they will all develop at the same time or in any specific order.

Although there is currently no cure for MND, symptoms can be managed to help achieve the best possible quality of life. However this is not funded by the NHS so they need to raise money and awareness for the people who suffer with MND and their carers.

For more details on how to enter contact Hayley on 07912562621



**PRIMROSE HILL NURSERIES**

**SUMMER BEDDING PLANTS & HANGING BASKETS READY NOW!**

**DISCOUNTS FOR QUANTITY**

*Caring Family Business*

*Open 7 days a week*

*Warrington Road, High Legh, Knutsford, Cheshire WA16 0SQ*

Telephone

**01925 752635**

**We Clean Ovens ...so you don't have to!**

Call us today to leave your cooking appliances sparkling, using our eco friendly products.

**oven**<sup>u</sup>  
oven valeting service  
Local | National | Affordable

Our oven cleaning experts will leave you free to enjoy your valuable leisure time.

Call for LOCAL service

**01925 453377** [oven.co.uk](http://oven.co.uk)

**FENSA**  
Registered Company

WINDOWS - CONSERVATORIES - DOORS

## Modern & Traditional styles

WINDOWS | DOORS | CONSERVATORIES | FACIAS & SOFITS | GARAGE DOORS

follow us on  
**twitter**

[www.irlamglass.co.uk](http://www.irlamglass.co.uk) | Freephone: **0800 197 0798**

Email enquiries: [info@irlamglass.co.uk](mailto:info@irlamglass.co.uk)

Builders Yard, Albert Street, Cadishead M44 5JB | All Credit Cards accepted





Lymm High School

# Open Evening

*All Year 4 and 5 primary pupils are very welcome*

Thursday 18<sup>th</sup> June 2015

5:00-7:30pm

**Headteacher's Speech  
Main Hall at 5:15pm and 6pm**

Our Open Evenings are a great way to experience the opportunities afforded to pupils at Lymm High School.

Come along to tour the facilities and meet our Headteacher and staff. You will be able to hear first-hand from our current pupils and experience our fantastic learning environment.



*Pupils '...have a positive attitude to learning and make the most of their experiences in the classroom and in the wide range of extra-curricular activities.' Ofsted*

Lymm High School  
Oughtrington Lane  
Lymm  
Warrington  
WA13 0RB  
Tel: 01925 755458  
Email: [info@lymmhigh.org.uk](mailto:info@lymmhigh.org.uk)





# Rugby club summer marquee has something for everyone!

THE summer marquee at Lymm Rugby Club will host something for everyone this June.

A posh Masquerade Ball, Ladies Lunch, Sportsman's Evening and a hilarious Vaudeville Variety Show are all part of a great entertainment programme from 13 to 19 June.

"We have a range of events planned to give a great fortnight of fun," said club President and Lymm Panto producer Simon Plumb.

"It's all to raise funds for the Grass Roots Clubhouse Appeal, so we can put Lymm Rugby Club at the heart of the community."

The annual Posh Party on the Pitch on Saturday 13/6 will be a Masquerade Ball with black tie and posh frocks, featuring a live band and three course meal.

Phil Bennett is the speaker at

the black tie Sportsman's Evening on Thursday 18 June, the former Wales International and British Lion legend. Tables of ten are available from Mal Pritchard on 07855 322248 - a must for corporate entertainment.

"As part of the Lymm Festival, and back by popular demand after a great performance last year, the world famous Lymm Panto cast are producing the Vaudeville Variety Show featuring burlesque dancing and saucy sketches, on Friday 19 June. This Vaudeville Show is a showcase event for those who struggle to get Lymm Panto tickets at Christmas," added Simon.

The successful Ladies Charity Lunch on Friday 19 June, with many local schools involved, precedes the Vaudeville Show and double

tickets for both events are available from Colette Cartwright on 07789 265447.

For the Vaudeville Show tickets contact fiona@spa-group.co.uk on

01925 755590 or from www.lymmfestival.org.uk

For dates, details and tickets for all these events please visit www.trylymm.co.uk



**WILKINS** ESTABLISHED 1899  
**CHIMNEY SWEEP** **01928 897 294**

◀ TRADITIONAL BRUSH AND VACUUM SERVICE  
◀ PROFESSIONAL, CLEAN SERVICE ◀ NESTS REMOVED  
◀ FULLY INSURED ◀ POLICE CHECKED

[wilkinschimneysweep.co.uk/westcheshire](http://wilkinschimneysweep.co.uk/westcheshire)

## Warrington's only supplier of German kitchens

**www.jdkitchens.co.uk**

**01925 636997**

**sales@jdkitchens.co.uk**

### JD Kitchens

- ✓ Luxury German & UK Kitchens
- ✓ Family Business
- ✓ Est 2001
- ✓ Backed by KBSA Consumer Protection Scheme
- ✓ MasterPartner

Visit us at:

4 Gorsey Lane,  
Warrington  
WA1 3PU

---

FREE Recipe book when you bring this advert



# Have a good laugh at this year's Lymm Festival



THERE is plenty on offer for comedy fans at this year's Lymm Festival.

Jo Caulfield (left) will be giving her Uninformed Opinions on June 26. If you like her razor sharp observations and scandalous one-liners get along to the Lymm Hotel for Jo and her acerbic tongue.

Comedy fans are spoilt for choice that night as in the Boot Room at the Golden Fleece you can get some comedy therapy with Pete Scott's Songs of Jake Thackray. This is always a sell-out.

When an agony aunt reaches sixty she can jump off a bridge or take to the stage. That's what Virginia Ironside (top right) will be doing on June 24 when the doyenne of Fleet Street will be delivering her observations on Growing Old Disgracefully at the Lymm Hotel.

Finally the Lymm Panto Company will be giving a summer airing to their mix of adult humour and burlesque dancing at the Vaudeville Variety Show in the Summer Marquee at Lymm Rugby Club on June 19.

Meanwhile The Bridgewater Players will be looking at the 1990s through the eyes of Alan Bennett. A series of "Talking Heads" monologues including "Her Big Chance" and "A Cream Cracker under the Settee" will be performed at Thelwall Parish Hall on July 24 as a Festival encore.

Full ticket details can be obtained at [lymmfestival.org.uk](http://lymmfestival.org.uk).



## Just a journey

HAD a memorable journey somewhere? Celebrate Lymm's Transport Day by entering the "Just a Journey" writing competition.

Maybe it was a very ordinary journey which turned out special? A journey you'd rather forget? Perhaps it was unforgettable for good reasons. Whatever your journey, Just English wants to hear about it. Competition details are available on the Just English website at [www.justenglishlymm.co.uk](http://www.justenglishlymm.co.uk). The competition is open to any young person under the age of 18. Closing date June 26.

The winning entry will be announced in time for Transport Day.

18th - 28th June **Summer Festival 2015**  
[lymmfestival.org.uk](http://lymmfestival.org.uk)

Over 40 great events over 11 days!

<p><b>VARIETY</b></p> <ul style="list-style-type: none"> <li>MUSIC</li> <li>THEATRE</li> <li>COMEDY</li> <li>ART EXHIBITIONS</li> <li>MUSIC</li> <li>DANCE</li> <li>LYMM WALKS</li> <li>EDWARDIAN GARDEN PARTY</li> <li>EMBROIDERY EXHIBITION</li> <li>AND MANY MORE...</li> </ul>	<p><b>STAR EVENTS</b></p> <ul style="list-style-type: none"> <li>TERRY WAITE</li> <li>STEPHEN HOUGH</li> <li>JO CAULFIELD</li> <li>VIRGINIA IRONSIDE</li> <li>BEVERLEY CRAVEN</li> <li>WHILE AND MATTHEWS</li> <li>PLUS A HOST OF LOCAL TALENT..</li> </ul>	<p><b>VENUES</b></p> <ul style="list-style-type: none"> <li>LYMM HOTEL</li> <li>STATHAM LODGE HOTEL</li> <li>LYMM HALL</li> <li>LYMM GOLF CLUB</li> <li>LYMM HIGH SCHOOL</li> <li>LYMM VILLAGE HALL</li> <li>THELWALL PARISH HALL</li> <li>LOCAL CHURCHES</li> <li>BOWDENS</li> <li>AND MORE..</li> </ul>
--	---	---

Don't forget Transport Day

Contract with us on Facebook & Twitter  
 Search: LymmFestival

**Lymm Festival**  
 Lymm Historic Transport Day

Responsible Charity  
 No. 1154822

**THE LYMM HOTEL**

**WINTER WEDDING OFFER**  
 Book your wedding before the 31st July 2015 for January / February / March 2016 and receive our 'Amazing Wedding in a Box' package with an additional 5 complimentary bedrooms.

**WEDDING OPEN DAY**  
 SUNDAY 17TH MAY 2015 11AM UNTIL 3PM  
 Discuss our fantastic facilities and discuss your exciting plans with our wedding experts.

**CELEBRATION PACKAGE**  
 ONLY £999  
 Do you have a special occasion coming up?  
 Maybe you are planning a birthday, engagement party, celebrating an anniversary or even getting married. We'd be delighted if you chose to host your party here at The Lymm Hotel.  
 Celebrate with us!

**SUNDAY LUNCH**  
 Three course Lunch at £15.95 per person, half price for children up to 12 years old  
 Children under 2 years old eat FREE

For further information, please call  
 0844 879 9047 or email  
[general.lymm@macdonald-hotels.co.uk](mailto:general.lymm@macdonald-hotels.co.uk)

Whitbarrow Road, Lymm, Warrington, Cheshire, WA13 9AQ  
 \*Terms and conditions: Children prices apply if under 7 years of age.

AA Hospitality Awards  
 2013 - 2014  
 THE LYMM HOTEL

[WWW.MACDONALDHOTELS.CO.UK/LYMM](http://WWW.MACDONALDHOTELS.CO.UK/LYMM)



# All set for May Queen Festival



THIS year's Lymm May Queen Festival takes place on Saturday June 13 - for one day only - although there are plans to try and make it a two day event next year.

The Lymm Rose and May Queens were chosen at Lymm Methodist Church, Eagle Brow.

Rose Queen elect is Elizabeth Nelson aged 7 who attends Cherry Tree Primary School, retiring Rose Queen is Zoe Thompson, retiring May Queen is Esme Stevens and May Queen elect is Rebecca Chapman aged 12 a student at Sir Thomas Boteler school.

The procession will commence at 1.30pm from Brookfield road, going down Eagle Brow to the Cross, then up Rectory Lane and turning right into Church Road past the dam. It then turns right into Brookfield Road, and then comes down Eagle Brow to the Cross for a second time, before heading to the May Queen Field on Pepper Street

On the field there will be the crowning of the May and Rose Queens, procession of Characters, along with various stalls and funfair rides.

This year's arena main event will feature 3SIXTY Bicycle Stunt Team.

Festival Chairman Steve Harper said: "You may have seen the May Queen festival advertised as taking place on Saturday and Sunday. Due to unforeseen circumstances this has not been possible for this year, but is something the committee are keen to pursue for

future years.

"We are very grateful to our sponsors, and to the traders of Lymm for supporting Lymm May Queen festival."

"We are always looking for fresh ideas and initiatives, and if you would like to become involved in any way please contact myself at chair@lymmmayqueen.org.uk.

"Please come along and support this long tradition community festival!"



**Nancy's deli**

*The perfect gift for Dad*

3 Local Beers in a Box

We offer a selection of local products ideal for making hampers for a special gift

Including local cheese, pies, chutney and chocolates

**10 Bridgewater Street, Lymm - 01925 756829 - nancysdeli.co.uk**



[www.lymmmayqueen.org.uk](http://www.lymmmayqueen.org.uk)

Procession, Fair rides, stalls, food & drink

A fun day for all the family!

Admission to the field:

£1.50 adults, 11-18 year olds £1

Children and oap's free

Sponsored by



## Saturday 13th June 2015

### Procession commences at 1.30pm



**Arena Main Act**  
3SIXTY Bicycle Stunt Team



# Lymm May Queen Festival



# Local girl who escaped earthquake horror launches fund-raising appeal

A LYMM girl who escaped from the horror of the Nepal earthquake has launched a fundraising drive to try and help the thousands of people left homeless in the stricken country.

Faith Thomason, aged 21, was on a backpacking holiday with her boyfriend, Harry Donovan, aged 23, from Bowdon and were in Kathmandu when the earthquake struck.

They fled their hotel as buildings were collapsing all around them, suffering only minor bruises and spent three days and two nights under a makeshift tarpaulin shelter before managing to get on one of the first flights out of the country.

Now, safe home in Lymm, Faith said: "I feel as if we could have done more to help. I feel so guilty that we got away when so many others couldn't. But we were so scared."

Faith and Harry were backpacking in India and decided to go to Nepal to book a flight around Everest. But the earthquake struck shortly before the flight was due to take place.

They were in a hotel which did not collapse. But the whole building was shaking as they fled down the stairs. Outside it was chaos, with buildings collapsing and people screaming.

Faith said: "It was as if the ground under your feet had turned to liquid. It was the weirdest feeling I have ever experienced. We made for an open field for safety and Harry got some tarpaulin to make a shelter.

"We spent two nights under the tarpaulin but managed to buy a tent for the third night. The weather was really hot during the day but freezing cold at night and it seemed to be raining all the time."

For Faith's mum, Alison, it was a worrying time. She heard about the earthquake and knew that Faith and Harry were in Kathmandu. But fortunately, Harry managed to get a message out via Facebook within four hours of the news breaking telling everyone that they were all right.

The former Lymm High School student has set up an online appeal through the United Nations children's charity UNICEF and people who wish to support it can do so at <http://myfundraising.unicef.org.uk/MyPage/Faith-Thomason> or by calling 0300 330 5580.

The ordeal has not put Faith off backpacking. But she said: "It is so good to be back home in Lymm. We don't realise how fortunate we are."



Faith, back home in Lymm, with mum Alison.

## International netball player inspires students

ENGLAND international Sara Bayman who is in the Netball squad for the World Cup this August in Australia visited Lymm High School to take part in a question and answer session and practical workshop with the Key Stage 3 netball squads.

Sara has been involved with England netball since she was 17 and is part of the local team Manchester Thunder. She talked to the students about her life as a full time netball player and brought with her a Commonwealth games medal (Bronze), and other memorabilia from her time with Manchester

Thunder and England.

All the students were an asset to the school, asking excellent questions about life as an athlete on, and off, the court, training schedules, diet plans, hardest opposition and personal game preparation. Lymm High School was very grateful to Sara for taking time out of her busy schedule to visit the school and have no doubt that she inspired the students to keep pushing for more representative netball honours.





# Online Since 1873 Now with WiFi



New café bistro now open!

IRLAM STATION

WE'RE GOING PLACES

Working in partnership







# LYMM PARISH COUNCIL NEWSLETTER

Dear Residents of Lymm,

I have thoroughly enjoyed my time as Chairman of Lymm Parish. In my time as Chairman I have sought to help all aspects of the community and stream line and modernise Council proceedings with the help of my fellow councillors.

I can happily report that under my watch I have :

- Modernised and streamlined Parish Council proceedings which has resulted in better communication and positive action on a variety of issues close to the communities heart, and have I also created a modern website that show cases Lymm.
- Brought back the Civic Service to honour those who volunteer and help to make Lymm a better place.
- Written a series of newsletters informing the Parish what the Parish Council has achieved under my leadership for the Parish of Lymm.
- Have chaired and led meetings that will form a new working relationship with Warrington Borough Council with regard to litter and the environment – this will make the Village a tidier place especially during the various festivities that take place during the year.
- Worked hard with many local organisations and local schools such as organising local Youth Awards, actively supporting Lymm in Bloom and have advised play groups and small organisations about funding streams and grants.
- Supported and have taken an active part in the regeneration of the Youth and Community Centre.
- I have been on the committees of many local organisations for example the May Queen committee – I am their secretary and I have designed their official logo. I have also held meetings drawing together the main organisers of events in the Village to enable a measure of synergy to take place.
- I am currently working with Lymm Parish Church and Warrington Borough Council to improve access to Lymm War memorial.

I have also been honoured to represent Lymm Village at many events in Warrington and surrounds. Finally I would like to say again how much I have enjoyed being Chairman of this thriving Parish and I wish all the best to the incoming Chairman Cllr Sheila Woodyatt.

**Cllr Kath Buckley**



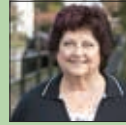
### Contact information:

Clerk of the Council: Amanda Riley - 07585 952445  
clerk@lymmparishcouncil.gov.uk

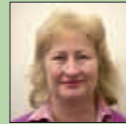
Parish Council Website:

[www.lymmparishcouncil.gov.uk](http://www.lymmparishcouncil.gov.uk)

## Lymm Parish Council 2014-15



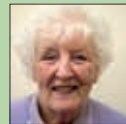
Name: Cllr Kath Buckley (Chairman)  
Address: 16 Hardy Road, Lymm WA13 0NX  
Telephone: 01925 752439  
Email: [kjbuckley@hotmail.co.uk](mailto:kjbuckley@hotmail.co.uk)



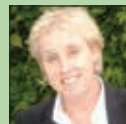
Name: Cllr Bev Bachmayer  
Address: Foxgloves, The Avenue, Lymm WA13 0SU  
Telephone: 01925 755532  
Email: [bbachmayer@aol.com](mailto:bbachmayer@aol.com)



Name: Cllr Bob Barr (OBE)  
Address: 2A Danebank Road, Lymm WA13 9DH  
Telephone: 01925 751817  
Email: [r.barr@peartrees.com](mailto:r.barr@peartrees.com)



Name: Cllr Sheila Chapman  
Address: 8 Laburnum Court, Lymm WA13 9GE  
Telephone: 01925 756224  
Email: [sheila1733@hotmail.com](mailto:sheila1733@hotmail.com)



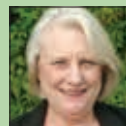
Name: Cllr June Gittins  
Address: 1 Longbutt Lane, Lymm WA13 0JB  
Telephone: 01925 753862  
Email: [junepgittins@talktalk.net](mailto:junepgittins@talktalk.net)



Name: Cllr Joe Griffiths  
Address: 9 Manor Road, Lymm WA13 0AY  
Telephone: 01925 754651  
Email: [joe.griffiths@lineone.net](mailto:joe.griffiths@lineone.net)



Name: Cllr Ian Marks  
Address: 80a Whitbarrow Road, Lymm WA13 9BA  
Telephone: 01925 753051  
Email: [imarks@warrington.gov.uk](mailto:imarks@warrington.gov.uk)



Name: Cllr Pam Marks  
Address: 80a Whitbarrow Road, Lymm WA13 9BA  
Telephone: 01925 753051  
Email: [pammarks@hotmail.co.uk](mailto:pammarks@hotmail.co.uk)



Name: Cllr Dave Openshaw  
Address: 12 Booths Lane, Lymm WA13 0PE  
Telephone: 01925 753180  
Email: [daveaopenshaw@aol.com](mailto:daveaopenshaw@aol.com)



Name: Cllr Peter Powell  
Address: 215 Rushgreen Road, Lymm WA13 9QY  
Telephone: 01925 754793  
Email: [ppowell215@btinternet.com](mailto:ppowell215@btinternet.com)



Name: Cllr Su Williams  
Address: Leckonby Cottage, 11 Whitbarrow Road, Lymm WA13 9AG  
Telephone: 01925 754080  
Email: [suwilliams@gmail.com](mailto:suwilliams@gmail.com)



Name: Cllr Sheila Woodyatt (MBE)  
Address: 16 Oughtrington Lane, Lymm WA13 0RD  
Telephone: 01925 753850  
Email: [swoodyatt@warrington.gov.uk](mailto:swoodyatt@warrington.gov.uk)



# Colony connects business and community

A Lymm resident and businesswoman is launching a new initiative to connect the local community with local businesses.

Kirsty James, mum of three and owner of three businesses including networking organisation, The Colony Networking Group, will launch the new community project, Colony Community, to help busy families access information and services on their doorstep relevant to modern day family lifestyle challenges.

To mark the end of national Healthy Eating Week (3-7 June), Colony Community will launch with its first event, Think Family Health on Thursday, June 11. At the event, local experts in health and wellbeing will come together to discuss key issues facing family health and nutrition and offer tips and practical advice.

Speakers from the public and private sector will include a nutritionist, a fitness and lifestyle trainer, the Council's Change4Life programme, a children's cookery company, a community pharmacist, an academic lecturer on dietetics, a wholefood supplement business and a local food store offering healthy meal ideas. Plus there will be literature, samples and demos of how to make healthy kids snacks.

Kirsty, founder of Colony Community, said: "The launch of Colony Community will see The Colony Networking Group enter a new market; it will still serve the south Warrington business

market with support, networking and training workshops but will now offer workshops and support events on topical subjects facing parents and other members of the community.

"I have always been amazed by how many great businesses there are often tucked away on our doorstep. Not a week goes without me being asked for a contact or recommendation and, luckily, through my businesses, I'm able to help connect people. One thing that the business sector does well is to run events and share expertise. In the consumer market, it can be harder to find events leaving us to fall back on word of mouth and time consuming research instead.

"Having grown up in Lymm, I've always been involved with societies, clubs and local charities, so I wanted to combine business with pleasure and bridge this gap by connecting great local services and expertise with the wider community on subjects that could really make a difference to the wellbeing of local families. Working together and keeping it local for the mutual benefit of all is the ultimate goal of Colony hence the slogan 'Success in Numbers'."

Colony Community plans to host two further events - Think Family Finance and Think Internet Safety.

Think Family Health will take place from 7.30pm to 10.30pm on Thursday, June 11 at Cherry Tree Primary School, with drinks available from the school PTA bar.



Tickets from £12.00\* will include a donation to the Warrington Food Bank and Cherry Tree Primary School PTA.

\* Early Bird £12 until May 31. Advance £13.50 1-10 June. On Door £15. Numbers will be limited. Tickets at <http://thinkfamilyhealth.eventbrite.co.uk>.

For more information, contact Kirsty James on 0844 504 6627 or email [kirsty@colonynetworking.co.uk](mailto:kirsty@colonynetworking.co.uk), join the Colony Networking Facebook group or sign up for future event updates at <http://eepurl.com/W89CX>

## Colony BUSINESS

Success in numbers

Networking events, support and training workshops for business owners

- Networking (Church Green)**  
 Wed 3 June Speed Networking  
 Wed 1 July Behavioural Business  
 Wed 9 Sept Business Planning

- Workshops (Statham Lodge)**  
 Thurs 18 June Time Management  
 Thurs 16 July Social Media Marketing  
 Thurs 17 Sept Social Media Sales

[www.colonynetworking.co.uk](http://www.colonynetworking.co.uk)

## Colony COMMUNITY

Success in numbers

Information events and workshops for parents

- Thurs 11 June Think Family Health  
 7.30pm, Cherry Tree School, Lymm

Book at: <https://thinkfamilyhealth.eventbrite.co.uk>

**0844 504 6627**

[kirsty@colonynetworking.co.uk](mailto:kirsty@colonynetworking.co.uk)

Get event updates  
<http://eepurl.com/W89CX>

Group: Colony Networking

@colonynetwork

## Return of Ladies Lunch



LADIES Day will return to Lymm Rugby Club on Friday June 19, following its hugely successful launch event last year.

The charity lunch hopes to bring together hundreds of women from across the village to socialise, shop and strengthen community ties – all inside the Lymm Rugby Club marquee.

Attendees can shop at one of the stalls run by local businesses and enjoy a two course lunch followed by a fashion show by Laundry Boutique, then take home a goodie-bag of free gifts.

Over 200 women attended in 2014 and organisers hope to double that figure this summer.

All the local primary schools, along with Lymm High School, will directly benefit from the event. Representatives from each school's PTA are helping to organise the day and proceeds will be split evenly between the schools and the Rugby Club's own charity, Grassroots.

Colette Cartwright, from Lymm Rugby Club, is behind the event. She said: "Ladies Day last year was such a huge success – each PTA raised almost £500.

"It was also brilliant fun! Lots of ladies who came to support the event have told us what a great time they had. I hope women will see this is a chance to dress to impress, come out in force and enjoy a great lunch with friends in a beautiful setting."

The event will open half an hour early, for coffee and shopping, at 10.30am this year. Tickets cost £30 and include a welcome glass of fizz from 11am. The fashion show and lunch will be finished by 3pm but anyone wishing to stay longer is welcome to.

Tickets are expected to sell quickly for this event and the deadline for ticket sales is May 22nd. Tickets cost £30 each and are available from each school's PTA.

## Home Metal Art

Home Metal Art is a new, Lymm based business. We are driven by sharing innovative interpretations of handcrafted and original works designed and manufactured by talented artists, showcasing their ingenuity, love and passion for their chosen medium.

Please visit our website to see our selection of high quality, bespoke products.



"Home Metal Art - Creativity and Passion.... Individualised"

[www.homemetalart.co.uk](http://www.homemetalart.co.uk)



**Lymm**  
**SHUTTERS & BLINDS**  
 Reliable. Professional. Affordable.



We offer a wide range of beautifully made bespoke Plantation shutters, as well as all types of Blinds and Curtains.



We also offer a full Interior Design service for those that don't know where to start. This can include Carpets, Curtains, Wall paper and even advice on furniture, lighting and all things between and we can do this with the confidence that 25 years experience brings.

Call or email us today for a free consultation

T: 07738 934678 E: Neil@lymmshuttersandblinds.co.uk  
 www.lymmshuttersandblinds.co.uk

**REEDHOUSE**



**Kennels & Cattery**

- Large centrally heated/air-conditioned kennels •
- Special purpose built play area •
- Home pet sitting service and dog walking •
- Cosy comfy heated cattery •

Have a look at our new website: [www.reedhousekennels.co.uk](http://www.reedhousekennels.co.uk)  
**Please Call Alan or Alison on 0161 941 5699**  
 Gorsey Lane, Warburton

**DOVE**  
 ARCHITECTURE

Local RIBA Architects & Interior Designers  
 call **07885 715 801** for a **free consultation**  
 planning applications - house extensions - plans drawn



info@dovearchitecture.co.uk www.dovearchitecture.co.uk

**EXCHANGE YOUR GOLD AND SILVER FOR INSTANT CASH**



All items of jewellery accepted

Did you know...?  
 We accept silver jewellery, cutlery, tea sets, spoons, cigarette cases, candlesticks, trophies, trays, medals, coins and pocket watches.

**ROLEX WATCHES WANTED!**  
**ANY CONDITION**

Open: Tuesday-Saturday: 10am - 5.30pm  
 1 London Road, Stockton Heath  
 (First floor entrance on Fairfield Road)



**07544 486 621**  
**GOLD & SILVER BULLION DEALER**

**urban**  
 BUILDING PROJECTS LTD

**ARE YOU CONSIDERING EXTENDING OR RENOVATING?**




For a **FREE** consultation please call **01925 730888**  
 info@urbanbuildingprojects.co.uk  
**www.urbanbuildingprojects.co.uk**

410 Europa Boulevard, Gemini Business Park, Warrington WA5 7TR



**aspire**  
 Computers Ltd  
 41 Manchester Road, Woodston, Warrington, WA1 4AE  
 Tel: 01925 251143



Full range of PC support for home / business users



We now offer specialised support for MOT stations.  
**Are you ready for the change over?**

Contact us for our latest offers  
 or if you would like adding to our email offers list please email [sales@aspire-computers.com](mailto:sales@aspire-computers.com)

**To get your business on track and in the 'Pink' contact James Bryan on 01925 631592**



THE JOCKEY CLUB  
LIVE

PRESENTS

**A SUMMER OF LIVE MUSIC AND RACING**  
FOLLOWED BY

**MADNESS**

**3 JULY**

**KAISER CHIEFS**

**7 AUGUST**

**HAYDOCK PARK RACECOURSE**

BOOK NOW: 0844 579 3006  
HAYDOCK.THEJOCKEYCLUB.CO.UK



# Madness competition



THE Jockey Club Live presents 'An Evening At The Races' is proud to welcome MADNESS to Haydock Nights on 3rd July 2015 and having previously played on prestigious stages such as on top of Buckingham Palace for the Queens Diamond Jubilee concert and at 2012's London Olympic Games Closing Ceremony, MADNESS's live show is a perfect fit for the Haydock Park Grandstands.

'An Evening At The Races' offers a value for money experience unlike any other this summer. Alongside incredible headlining performances by the likes of Kylie, Madness and Kaiser Chiefs, the action kicks off earlier in the evening with 6 races - giving fans the chance to witness up close powerful equine athletes who are stars in their own right, and enjoy the thrilling drama and spectacle of them racing for glory. Whether you fancy a flutter or a dance with friends and family the event is certain to be an odds on favourite for all, with tickets starting at only £30.

In order to win a pair of tickets please tell us how many members of Madness there currently are?

Email the answer to: [info@lymm.life](mailto:info@lymm.life), titled: Madness competition - Lymm Life with your name and daytime contact details.

Closing date is June 14.

## Golf Club shows support for Brainwave



LYMM Golf Club captain John Christian, members and staff helped raise nearly £6,000 for Warrington based charity Brainwave.

John is pictured proudly receiving a Certificate of Thanks from Joanne Freeman, Community Fundraising Manager for Brainwave, to thank them for their wonderful contribution to the Charity.

During his year as Captain, John and the team have raised over £5,900 for the organisation via a number of activities including a Charity Golf Day. The Golf Club has supported a huge number of local and national Charities over the years.

John and Joanne would like to thank all those who have contributed to making it a very successful year and for helping to ensure that the children and families that Brainwave work with receive the very best of care and treatment.

Brainwave, based in Birchwood, works with children who suffer significant developmental delay helping them reach their potential and thus greater independence. Therapists work to improve mobility, communication skills and learning development via a range of educational and physical programmes, each programme being totally unique to the specific child's needs.

If you would like further information about the work that Brainwave does or if you would like to help raise funds for the charity then please contact Joanne at [joannefreeman@brainwave.org.uk](mailto:joannefreeman@brainwave.org.uk)

**CANVAS**  
COLOUR PRINTS  
500mm x 500mm  
**£24.70**  
+VAT

**50 WEDDING INVITATIONS**  
FULL COLOUR  
**£24.70**  
+VAT

**50 A3 POSTERS**  
**£24.70**  
+VAT

**100 BUSINESS CARDS**  
**£2.47**  
+VAT

**1x A2 COLOUR POSTER**  
**£2.47**  
+VAT

**PRINT PROBLEMS SOLVED!**  
BANNERS • STICKERS • MAGAZINES  
**FLYERS • POSTERS**  
OFFICE STATIONERY  
**CUSTOM PRINTS**  
FOLDERS • CARDS • SIGNAGE

**twentyfour seven**  
design & print ltd

info@247print.net • 01925 240247  
The New Media Centre • Old Road  
Warrington • WA4 1AT  
the **NEW MEDIA** centre

Artwork needs to be supplied in a print ready format. Payment must be made when ordering.



# Rick is 'coach of the year'

LYMM Oughtrington Park Cricket Club's coach, Rick Hughes, has been awarded the "Coach of the Year 2015" award by the English Cricket Board (ECB) in Cheshire.

His reward is to be invited as ECB guest of honour to the 2nd Investec Test Match at Headingley on May 29.

Rick's influence on young players at Lymm is illustrated by the fact that last season the Under 13s team won the NCJCA cup competition.

Club spokesman Bob Sabberton said: "The future of cricket in Lymm can be seen when our juniors play their matches. Last year they won the cup competition and this was due to the talents of the Under 13 boys which had been nurtured and developed by their coach, Rick Hughes.

"Rick has brought a thoroughly professional style to his coaching which the boys have obviously taken to in a big way.

"The club committee extends its thanks and congratulations to Rick and is proud to be the home club for the winner of an ECB coach award."

## Obituaries



### Doris Burgess

THE funeral has taken place of Doris Mary Burgess, nee Struthers, of David Road, Lymm, who died on March 29, aged 89.

Mrs Burgess is survived by a sister, brother nieces and nephews and is sadly missed by her family and friends.

The funeral service was at Walton Lea Crematorium on April 14.

Arrangements were by John Burrows and Sons, of Lymm.

### Lesley White

THE funeral has taken place of Lesley Carol White, nee Arnold, aged 69, of Crouchley Hall Mews, Lymm, who died at home on February 25.

Mrs White, a member of Lymm Flower Club, is survived by a daughter, Linzi, son Adam, four grandchildren and two step grandchildren.

Funeral arrangements were by John Burrows and sons of Lymm.

## Tribute to the "swinging sixties" girls

A ONE-man tribute to the girl singers of the "swinging sixties" will take place at the Lymm Hotel on Thursday, June 18 – the opening night of this year's Lymm Festival.

Local singer David John Dee has named his show "Thank Heaven For Sixties Girls" and he has devised it to enable a male singer to pay tribute to the "Golden Girl" singers of the Sixties.

David, a design engineer by trade, has been performing as a vocalist and bass guitarist for some years.

Born in Manchester, he has lived in Lymm with his wife for three years.

Artists he will pay tribute to include Dusty Springfield, Cilla Black, Petula Clarke, Sandie Shaw and Carole King.

Doors will open at 7.30 and all proceeds will be ploughed back into the Lymm Festival towards the funding of children's events during the festival.



David John Dee in performance

## CLASSIFIED

### ACCOUNTANCY & BOOKKEEPING

freelance and contractor accounting  
keeping it simple...  
**01925 598499**  
www.arleys.co.uk

**Bookkeeper/Accountant.** Licensed for maintaining financial records, VAT Returns, Payroll Service, Management Accounts, SAGE Software Consultancy. **Contact: 07815 617914.**

### BATHROOMS

We can create the Bathroom of your dreams  
One Warrington based Company  
One job from start to finish  
Unique 3D virtual CAD design system  
Please visit our website  
www.bathroomrefurbishment.co.uk  
Please Ring Wayne  
**01925 826 828 or 07976 574 828**

### BUILDING SERVICES

**BRICKLAYER AVAILABLE** for garden walls, pointing etc. **Tel: 01925 755441 Mobile: 07966 491624**

### CARPETS, CURTAINS & INTERIORS

**CURTAINS, CARPETS, VINYLs,** blinds, wall paper, top brands including Harlequin, Jane Churchill and Casadeco. Made to measure by friendly knowledgeable staff. Free carpet uplift and removal with any new carpet purchase. **Xross Interiors, The Cross, Lymm Tel 01925 758298 or email hello@xrossinteriors.co.uk web: www.xrossinteriors.co.uk**

### CARPETS, CURTAINS & INTERIORS

Paul Bains Flooring Solutions Ltd  
- CARPETS - WOOD - LAMINATES -  
- DECORATIVE VINYL FLOORING -  
- FREE CHOOSE AT HOME SERVICE -  
101 Bucklow Gardens, Lymm WA13 9RN  
T: 01925 748549 M: 07973 376224  
E: paulbainsflooring@msn.com  
www.paulbainsflooringsolutions.co.uk

### CARPET CLEANING

**A1 STAINBUSTERS:** Fully guaranteed carpet and upholstery deep dry cleaning. Clean & dry in only ONE hour. Quotes for both commercial and domestic. **Contact the local expert John Latham on 01925 205210 or 07765 314080**

**SIMPLY THE BEST CARPET CLEAN YOU** will ever have. Cleaners UK Ltd. Est 27 yrs. Have your carpets & sofas beautifully deep cleaned leaving them fresh smelling & colour restored. Latest & best methods. Dry/steam. Leather cleaning, oriental rug specialist. Professional, reliable & affordable. **For more info call Neil Riley on 01925 264989 / 07831 336060 www.cleaners-uk.net**

### CLEANING SERVICES

• Spring Clean Specialists  
• Presenting your home for sale  
• Moving house  
• After building work cleans  
**01925 266834**  
because you're worth it!

**SIMPLY THE BEST CARPET CLEAN YOU** will ever have. Cleaners UK Ltd. Est 27 yrs. Have your carpets & sofas beautifully deep cleaned leaving them fresh smelling & colour restored. Latest & best methods. Dry/steam. Leather cleaning, oriental rugs specialist. Professional, reliable & affordable. **For more info call Neil Riley on 01925 264989 / 07831 336060 www.cleaners-uk.net**

### CLEANING & IRONING SERVICES

**SWISH HOUSEKEEPING** - your local cleaning company. Domestic and commercial cleaning at competitive rates. Also ironing services. **For a FREE quotation call Angela on 07891 669502 or Adrienn on 07581 079705 or E: info@swishhousekeeping.co.uk www.swishhousekeeping.co.uk**

### ELECTRICAL CONTRACTOR

**TRUST PROPERTY ELECTRICAL SERVICES.** NICEIC Part P Approved Contractor. All Electrical work undertaken. Inspection & Testing & PAT Testing. All work certified & guaranteed. **Call Tim on 07754409906 or 01925 601055**

### EQUESTRIAN

**LYMM RIDING SCHOOL.** For all ages and abilities. Friendly atmosphere, group/private lessons priced from £12 on well schooled Horses/Ponies. Pony days and parties available. For more details contact Rebecca Bennett (RegAll). **Tel: 01925 750435. Mob: 07778 866006.**

### EQUESTRIAN SUPPLIES & ANIMAL FEEDS

**STABLES SADDLERY.** Est 1964. Good stock of all equestrian supplies and animal feeds. Also storage available for trailers, caravans and household goods etc. **Tel: Barbara Williams on Lymm 752762.**

### FARMING / FIELD SERVICES

**Neil Worth Contracting**  
**For Hedge Trimming and Paddock/Small Field Work also Septic Tank emptying**  
**Tel: 07973 242808**

### GARDENING SERVICES

**Beechwood Industries Ltd**  
Garden Management Solutions  
• Garden Maintenance  
• Lawn Care  
• Landscape Design  
• Construction  
• Paving  
• Tree Surgery  
• Free Assessment  
• Free Consultation  
Contact us on:  
**07749 253 308**  
**01925 860544**  
www.beechwoodindustries.co.uk

**JDS**  
**LANDSCAPE & GENERAL BUILDING SERVICES (LYMM BASED)**  
Garden Design • Driveways  
Patios • Garden Walls • Fencing  
Decking • Resin Bond Driveways  
See website for examples  
**Tel: 01925 754883 Mob: 07515 967735**  
www.jdscreate.com

Established 1878  
**John Burrows & Sons**  
Independent Family  
**Funeral Directors**  
MG & J Tandy  
16 Higher Lane, Lymm, WA13 0AP  
Chapel of Rest, Mill Lane, Lymm, WA13 9SE  
**Tel: (01925) 752501**  
Golden Charter  
www.johnburrowsandsons.co.uk



**CLASSIFIED**

**FREEPHONE 0800 955 5247 to advertise**

**GARDENING SERVICES**

**JP LANDSCAPES**  
 We are approved & recommended by Fountains  
 For confirmation call 01925 393 188 and choose option 2

- Block Paving - Tarmac
- Slabbing - Driveways
- Patios - Graveling
- Brickwork - Steps
- Fencing - Decking
- Power washing - Turfing
- Driveway Repairs

For a FREE no obligation quote please call  
**0800 858 9961 or 01925 393 188**  
 or call John direct on  
**07818 383 384 / jplandscapes50@gmail.com**

You have the right to a 7 day cooling off period  
 Vale Avenue, Warrington, WA2 8AY

**HANDYMAN**

**Handyman Services**  
 Home, Office & Garden

Internal and External Painting • UPVC Window and Door Repair and Replacement  
 Mechanism/Lock Changes • Soffits and Fascias  
 Gutter Cleaning, Repair and Replacement  
 Flagging • Fencing • Patios • Jet Washing  
 All Garden Work • All DIY

Call today for a FREE quote

Tel Neil: **01925 757905** (Lymm Based)  
 Mob: **07813 201850**  
 handymanerviceslymm@hotmail.co.uk

**PAINTING & DECORATING**

**ANTHONY MASON PAINTER AND DECORATOR** Over 25 years experience. Neat, clean, reliable service. All aspects including papering, paint finishes, colour advice and furniture painting. Tel. **Tony Mason: 07962532811**.

**BENJAMINS PAINTERS AND DECORATORS**, 20 years professional experience in commercial and domestic decorating, wallpapering, coving, interior and exterior work. Telephone **07837 452514 or 01925 755198**.

**PAINTER RELIABLE AND CONSCIENTIOUS**. Available for all interior and exterior work. 30 years' experience. Call Roy for a free estimate on **07721 902 467**. Fully insured.

**TAXI / PRIVATE HIRE**

**Frazer's of Lymm**  
 Private Hire Service • Good local rates  
 Reliable friendly service • up to five seater  
 Airport • Station Schools • Business  
 or pleasure for OAPs

Contact Nigel on **01925 754426**  
**07812 674822**

**Horn's**  
 Airport Transfer & Taxi Specialists  
 CALL MARTYN: **01925 751761**  
 MOBILE: **07881 786250**

**GARDEN CARE**  
 EST 1990

**Lawnmowing Service**  
 Professional mowers used,  
 5HP Honda, Hayter and Mountfield  
 Local reliable gardener

Also hedge cutting a speciality, shrubs, trimming and shaping, conifers topped, lowered and removed.  
 Trees felling and pruning, reducing height  
 All round general garden tidy ups

Call Greg Clarke for help and advice  
**01925 757069**  
**or 07969 533264**  
 lymmgardencare@btinternet.com

**HAIR & BEAUTY**

**PROFESSIONAL MOBILE** hairstylist, creative cutting, colour/colour correction, including foiled highlights. Tel: **Lorraine 01925 755441 / Mob 0786 7910805**.

**PAYROLL**

**WHY TRY TO BE A PAYE EXPERT?** Waikinson Black can provide a cost effective payroll service, releasing you to concentrate on your business. For further details please phone: **01925 413210** or e-mail: **info@warringtonaccountants.co.uk**

**Just English**  
 SPECIALIST ENGLISH TUITION

Call Wendy **07863 888 599**  
 www.justenglishlymm.co.uk

**ATLAS**  
 Your friendly local independent

WASP CONTROL  
 PEST CONTROL  
 CHIMNEY SWEEPING

Affordable, professional, guaranteed service. Fully insured, fixed prices - no surprises once on site!  
 Discrete vehicles, no embarrassing signs  
**07999 487 925 / 01925 445 222**  
 www.atlas4u.co.uk

**PEST CONTROL**

**PESTAWAY SOLUTIONS**. All pest problems dealt with. Local lad. Competitive prices. All work guaranteed, 25 years experience. Call now on **07823 338682** or **01925 755702**

**PIANO & KEYBOARD LESSONS** in your own home. Experienced Music Teacher - all levels taught in the local Lymm area. Competitive Rates. Tel: **01925 756189**

**PRIMARY TUITION: EXPERIENCED** Primary School Teacher available for private tuition. Numeracy and Literacy. Available after School and weekends. Call **01925 268627** or Mobile: **07843 607394**

**HYPNOTHERAPY**

**MICHAEL MAHONEY** clinical hypnotherapist for IBS, Stress, Anxiety and many other problems. Medical Research project experience, BUPA Service Provider. For free information sheet please email **TimelineServices@aol.com** or ring **01925-658322** www.healthyaudio.com

**PLASTERING**

**LYMM PLASTERING & TILING**

Time served Tradesman  
 Clean and reliable  
 Fully insured  
 All areas covered  
 No job too small

**Brian Gaffney**  
 Tel: **07967 087034**  
 (anytime)

**WINDOWS & GLAZING**

**NEIL COPELAND WINDOWS & Conservatories Ltd.** Specialist in uPVC double glazing windows, doors, porches, conservatories, also fascias and guttering. FENSA registered. All work guaranteed. Tel: **01925 756138 / 07961 361550**

**DOUBLE GLAZING**. For all your glazing requirements units including failed and misted units, broken windows, mirror fixing, UPVC doors and window frames. Kite marked to B/S. Time served glazier with over 30 years' experience. **SP GLAZING**. For a friendly no obligation quote tel Sam Pendlebury on **01942 671859**. Mob **07919 660296**.

**sequana gardens**  
 design build maintain

garden design  
 planting schemes

landscaping  
 patios & garden walls  
 fencing & decking  
 block paving

garden maintenance  
 hedgecutting  
 pruning and border care

call to arrange  
 free initial visit:

**01925 759465**  
 www.sequanagardens.com

**JOINERY**

**S3 JOINERY**  
 (Lymm based)

Joinery/Carpentry • Custom Cabinets and Built-ins • Kitchens • Decking  
 Flooring • Property Refurbishment

No job too small. Free quote  
 Fully insured and guaranteed  
**01925 694133 07590 470971**  
 www.s3joinery.com

**PLUMBING**

**CL PLUMBING AND GAS SERVICES**  
 Local honest plumber covering all aspects of plumbing and gas works. Boilers and central heating installed and repaired. Bathroom suites supplied and fitted. Cookers and fires fitted. Landlord gas safety checks. All plumbing emergencies - 24 hour call out. No job too small, OAP Discount rates. Tel **Craig 01925 819692 07851 405466** www.warringtonplumbingservices.co.uk

**Lymm Life**

offers a cost effective local **LEAFLET DELIVERY** service at competitive prices. We can also design and print leaflets with our in-house design team.

Call us now on  
**0800 955 5247**

**WOODY'S**. Garden maintenance, all garden work undertaken. Tel Trevor Wood. Telephone **01925 262485**. Mobile **07582 516652**

**KITCHENS**

**QUALITY KITCHENS SUPPLIED** and fitted by local experienced fitters. No job too small. If you have bought a kitchen we can fit it - or we can supply and fit full kitchen units including joinery work, plastering, electrics etc. All work is guaranteed. **B&L Kitchen Installations, M 07935 267200 or 01925 451883** after 6pm.

**Gas Safe Registered Engineer**

Andy Gas of Lymm, specialist in: Boiler upgrades, servicing, repairs to all domestic heating and gas appliances. For a professional service call Andy **07753 838129 or 01925 753712**

**MOTORING SERVICES**

**PARKVIEW CAR SALES**

We buy and sell **QUALITY CARS**  
 Best price paid

Telephone Peter on  
**01925 575737 / 07957 545479**

23 Padgate Lane  
 Padgate, Warrington  
 Cheshire, WA1 3RS

**MORTGAGES**

**INDEPENDENT MORTGAGE ADVICE**. For local, impartial and professional advice on all aspects of mortgages contact Darren Simpson at Infinite Financial Services on **08450 309099 (local rate) or 07708 975122**.

**RE-UPHOLSTERY**

**Orchard Soft Furnishings**

RE-UPHOLSTERY  
 CURTAINS • BLINDS

FREE MEASURING & FITTING

TEL: (01925) 756388  
 www.orchardsoftfurnishings.co.uk

**GATES & FENCING**

**Village Gates**  
 Manufacturers and installers of quality timber gates

villagegates.co.uk

For free quotes and advice call  
**01925 552322**  
 New Workshop and Showroom at:  
 8a Trident Business Park, WA3 6AX

**OPTICIANS**

**ADCOTT OPTICIANS**. State of the Art opticians in the heart of Lymm Village. Comprehensive sight tests and a wide choice of spectacles tailored to you, whatever your budget. **01925 757075**

**SITUATIONS VACANT**

**LYMM LIFE MAGAZINE** is looking to recruit an experienced sales person. Working on our other titles including warrington-worldwide magazine you will have experience of selling advertising, you will be self motivated, flexible and computer / IT literate. The position offers a basic salary, commission and expenses. To arrange an interview please email **garys@warrington-worldwide.co.uk**



# Banner & Co

Independent Residential Sales and Letting Agent



## SUCCESSFULLY SELLING PROPERTIES IN ALL PRICE RANGES



## MORE PROPERTIES NEEDED FOR WAITING BUYERS. CALL TODAY FOR A FREE, NO OBLIGATION MARKET APPRAISAL



01925 753636 [www.bannerandco.com](http://www.bannerandco.com)

*Please note that if you have already instructed another agent, we would advise you to check any agreement you may have to ensure you are not liable for more than one commission by instructing us as your agent*

