

VILLAGE

Your Community Magazine

Issue 169 April 2015 **FREE**

life

U
urban
BUILDINGS PROJECTS LTD

Residential & Commercial
Building Specialists

Tel: 01925 730888
www.urbanbuildingprojects.co.uk

Stockton Heath • Appleton • Grappenhall • Thelwall • Stretton and surrounding areas

**Spring is
in the air!**

Page 3

Picture: John King

eden

LANDSCAPING & DRIVEWAY
SPECIALISTS

Tom Morgan
01925 263125
07595 184312

www.eden-landscapes.co.uk
info@eden-landscapes.co.uk

For all your local news www.warrington-worldwide.co.uk

So does the UK General Election matter to financial markets?

Well yes and no. Yes in as much as that whatever happens we will almost certainly see a little bit of short term volatility in the markets. But no, because in the medium to long term whichever party gets elected Labour or Tory the policies are not much different to one another. Now of course the politicians will berate me for saying that. However, both political parties are in fact similar, and have been for many years now. But for example look at the national deficit. One party will want to make cuts to reduce it, the other wants to borrow to get growth to reduce it. But, and this is the most important point, they both want to reduce it.

Have a look at the table below which demonstrates the performance of the FTSE ALL Share Index one month prior, one day after, and one month after to past general election results. I think some of these percentages will surprise quite a few people.

Election results and FTSE All Share performance

| Date | Incumbent | Winner | 1m Pre % | Day After % | 1m Post % |
|------------|--------------|--------------|----------|-------------|-----------|
| 18/6/1970 | Labour | Conservative | -2.4% | 5.4% | 3.2% |
| 28/2/1974 | Conservative | Labour | 7.9% | -7.3% | -19% |
| 10/10/1974 | Labour | Labour | -11.3% | -2.6% | -1.0% |
| 03/5/1979 | Labour | Conservative | 5.9% | 1.3% | -6.5% |
| 09/6/1983 | Conservative | Conservative | 3.7% | same | -1.5% |
| 11/6/1987 | Conservative | Conservative | 3.7% | 1.7% | 7.7% |
| 09/4/1992 | Conservative | Conservative | -5% | 5.9% | 13.4% |
| 01/5/1997 | Conservative | Labour | 3.5% | 0.2% | 2.9% |
| 07/6/2001 | Labour | Labour | 1.3% | 0.1% | -8% |
| 05/5/2005 | Labour | Labour | -1.5% | 0.3% | 2.5% |
| 06/5/2010 | Labour | Conservative | -8.3% | -2.9% | -2.7% |

Likely Outcomes

This election is really too close to call. The bookmakers at the time of writing this have co-favourites of 4/1 of the present Coalition, to 4/1 Labour with the largest party but no majority, and 4/1 with a pact of Labour and the SNP. I personally think that Mr Farage will not attain 5 seats, but we shall soon see. It promises to be good entertainment all the same. But don't let it concern you about investing and the financial markets. In this day and age markets are truly global, and as such elections are taking place every year and still do have a negative and sometimes positive impact at that event. But they tend to settle down after that fairly quickly.



Don Wernham,
Financial Planner

TECHNOLOGY

Simple Solutions uses the latest technology to keep you updated, even when you are on the move or abroad, check out our website for more details.



PENSIONS

• Pensions are changing due to the March 2014 budget and you now have a lot more options to consider'

INVESTMENTS

Our investment expertise will ensure that you have the most suitable investment to help you achieve your financial goals.

We use:

- Asset Allocation
- Risk Profiling
- Diversification
- Correlation

1st Floor, 67 London Road
Stockton Heath, Warrington
WA4 6SG

Tel: 01925 266628
Fax: 01925 267043

Simple Solutions Financial Management Ltd is authorised & regulated by the FCA. The registered office is 1st Floor, 67 London Road Stockton Heath, Warrington WA4 6SG. Registered in England & Wales. The company Re No 6920858



@SimpSolsIFA

www.simplesolutions.financial

Editor
Gary Skentelbery

Production
Paul Walker

Account Executives
James Balme

Advertising
Freephone
0800 955 5247

Editorial
01925 623632

Email
info@warrington-
worldwide.co.uk

Websites
www.culchethlife.com
www.frodshamlife.co.uk
www.lymmlife.co.uk
www.village-life.co.uk
www.warrington.tv
www.warrington-
worldwide.co.uk

Address
New Media Centre
Old Road, Warrington
Cheshire WA4 1AT

Distribution
Village Life is distributed freely
to selected homes throughout
the area as well as being
available to pick up from various
outlets, some of which are listed
below.

Appleton:
Village Hall, Co-op
Grappenhall:
Co-op, Community Centre
High Legh:
Garden Centre,
Village Hall
Knutsford:
Fryers Garden Centre,
Library, Heritage Centre,
Shaw Heath Social Club,
Mr Chips
Lower Walton:
One Stop Shop
Mere:
Village Store,
Parish Club
Mobberley:
Rajar Building
The Victory Hall
Stockton Heath:
Co-op, Library
Stretton:
Beehive Stores
Stretton Newsagents
Thelwall:
Post Office

*Village Life is published monthly by
Orbit News Ltd.*

*The contents of this magazine are
fully protected by copyright and
may not be reprinted or reproduced
without prior permission of the
publishers.*

*The publishers are not liable for any
statement made or opinion expressed
by third parties in this publication.*

Printed by TwentyFourSeven

Editor's comment

OUR article last month about the damage caused to the Grade 2 Listed Walton Bridge by a lorry contained a comment from local resident Peter Priestner that he hoped the 18th century bridge would be restored to its original specification.

This, in turn, led to us receiving a letter from RIBA specialist conservation architect James Gibson expressing similar hopes and setting out the procedures necessary to ensure the bridge was appropriately repaired.

It would seem the remarks made by both Mr Priestner and Mr Gibson were prescient as in this month's issue we report widely felt dissatisfaction with the work that has been carried out.

At the time of writing, the work

has not been completed. Peel Holdings, who own the bridge, say the original bricks could not be used. The contractors say the bricks that have been used will be "weathered" to blend in with the rest of the structure.

But local residents and councillors say the modern bricks used are "unsympathetic" and completely out of character with the old bridge.

At the end of the day, it is not up to Peel Holdings, the contractor nor local residents to decide whether the repairs are satisfactory. It is up to the borough council, who have the power to take enforcement action to ensure it is. Whether or not they would have, to use a modern parlance, the "bottle" to do so, remains to be seen.

But if the whole system of "listing" historic buildings is to mean anything



at all, the bridge must be restored so that within a year or two, it will not be possible to tell it has been repaired at all.

Cost should not be a significant factor – hard though that may be for the insurer.

Spring is in the air!

Spring is in the air at Walton Hall and Gardens.

Seventeen year old Stephanie O'Sullivan is pictured amongst the Spring daffodils with two new born chicks from Walton Park Zoo.

Stephanie is a student at Rease Heath Agricultural College Nantwich on a six week animal Care course at the childrens zoo.



Stage set for student success stories

THEY'VE impressed audiences across Warrington and now some of the town's young performers are heading to even bigger stages.

Priestley College's Performing Arts students have been offered places at some of the country's top acting and dance schools including East 15 School of Acting, Bird College of Dance and the Urdang Academy in London.

"Audiences enjoyed watching these students in their winter showcase and that kind of experience has helped them to achieve their places at these top performance schools," said Sarah Graham, Head of Performing Arts at Priestley.

"What they have achieved is incredible and it has been wonderful for us to watch them blossom into such strong and talented performers."

Most recently audiences were entertained by their winter showcase of set pieces taken from the likes

of *Mary Poppins*, *Dogfight* and *Decadence*.

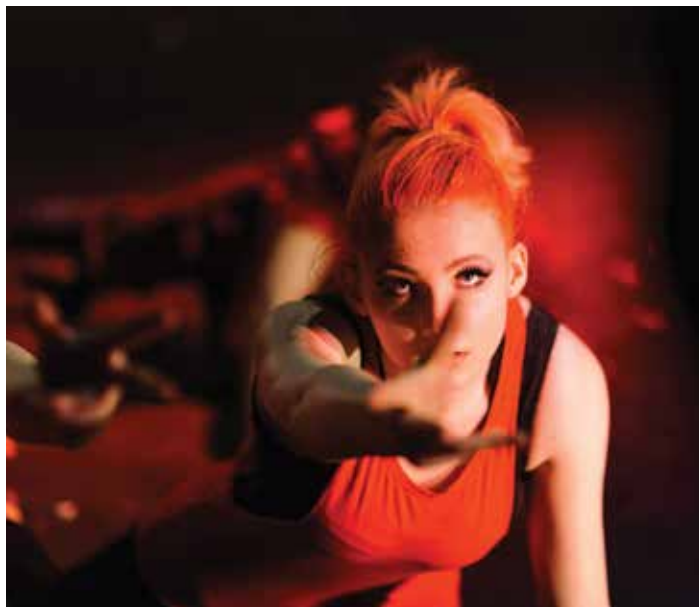
Next they will be starring in Priestley College's production of *'Spring Awakening'* on May 12, 13 and 14 giving them a final chance to impress Warrington audiences.

"They will want to go out with an impressive show so everyone is in for a treat," said Sarah.


Priestley's first years will also be performing *'A Chorus Line'* on June 23, 24 and 25.

All performances for both shows start at 7.30pm and tickets are on sale now at £9 for adults, £7 concessions. *'Spring Awakening'* is only suitable for over 16s.

Call 01925 633591 to book your ticket.



■ Scenes from Priestley's winter showcase.



**PREMIER
(C&D) LTD**

Plumbing and Central Heating

- Installation
- Repairs
- Maintenance

Perfection In Water

Tel: 01925 811418
Mobile: 07971 133187
Email: plumbing@premiercd.co.uk

WRAS
Water Regulations Minister Scheme

City & Guilds

**orb
jewellery** www.orbjewellery.co.uk
01925 759492

Jewellery for all Occasions

 Jewellery Repair Workshop
Watch Batteries & Straps
Rhodium Plating

Insurance Valuations
Jewellery Cleaning & Re-sizing
Bespoke Design Service

1 The Grove, Lymm (next to post office)
Tue / Fri 9:30 - 5:00 Sat 9:30 - 4:00 (Thur till 7 pm)





Check our reviews on checkatrade.com

Save up to 40%
on the cost of a full replacement kitchen...

Save £1000's with a makeover from Dream Doors Our kitchen designers have a wealth of experience and can help you achieve the kitchen of your dreams.

- Free estimating, planning & design service
- Huge choice of doors, worktops, sinks, taps & appliances
- Trusted reputation

 kitchen before!

DREAM DOORS®
NEW LIFE FOR OLD KITCHENS

Call now for a Free Design quotation 01925 211308

Visit our Showroom: 92 Knutsford Road, Grappenhall, Warrington WA4 2PJ
View our credentials

www.dreamdoors.co.uk  

**Warrington
Service Centre**
Leading MOT Automobile Servicing Specialist For Cars & Bikes

**Make a smooth
getaway this Easter**
Avoid any false starts, book your holiday service
Driving Abroad Kits now in Stock!
Prices from £15

**from just
£86***

Warrington Service Centre for honest, reliable repairs and maintenance

- Centrally located in Warrington
- MOT, Service and Repairs of all Makes and Models of Cars, Bikes and Vans
- Fleet Repairs and Maintenance
- Collection & Delivery can be arranged

**Call now on 01925 232255
to book, quoting WW01**

www.warringtonservicecentre.co.uk

*Standard filter and oil change on 1 litre engine

Sporting stars help raise £2,600 for little Abbie

A FUND-RAISING evening in Stockton Heath featuring Warrington Wolves' star Gareth O'Brien and Warrington Town manager Shaun Reid helped raise £2,600 for a local girl who requires special therapy to help her walk.



Little Abbie Heaney has a rare condition called Rett Syndrome, which mainly affects girls and although now aged two-and-a-half she has still not spoken her first word or shown any signs of walking.

The funds raised from a "Curry night" at the Cardoman Indian Restaurant helped raise the funds which will now go towards helping provide special therapy sessions for Abbie at the Birchwood based charity Brainwave, who are developing a specialist programme aimed at helping Abbie learn to walk.

Wolves half-back Gareth donated a signed shirt to the fund-raising appeal, while Warrington Town donated hospitality for four in the sponsors lounge at a home game.

During the event Gareth and Shaun took part in a Q&A session with the audience.

Brainwave help children with disabilities and additional needs to achieve greater independence. Aiming to improve mobility, communication skills, and learning potential, through a range of educational and physical therapies, their therapists work with the family to devise a unique programme, specifically designed to suit that child's needs, which will help and encourage them to unlock their own child's potential.

Abbie's Mum Sarah said: "We would like to thank everyone for their support. It was a great evening and we are hopeful this specialist treatment will help Abbie take her first steps."

Joanne Freeman, Brainwave's

Community Manager said: "Brainwave's therapy centre receives no funding from the government or NHS to help local families like the Heaney family, we are so very grateful to the local community and companies for their continued support to help disabled children."

Anyone who would like to help raise funds for the charity, then please contact joannefreeman@brainwave.org.uk



Shaun Reid and Gareth O'Brien at the event.

Residents threaten action to slow down traffic

RESIDENTS of a busy country lane are threatening to deliberately park their cars out in the road in an attempt to slow down traffic speeding passed their homes.

They say a 40mph limit is too high in Lumb Brook Road, Wright's Green, Appleton - and they don't think local councillors are doing enough about it.

In fact, Appleton Parish Council has been campaigning for a reduced speed limit for years.

Chairman Cllr Dot Edwards said: "I have been on the council for 30

years and in all that time we have been trying to persuade the highway authority to extend the 30mph limit, because we agree with the residents. But so far we have been unsuccessful."

Cllr Brian Axcell said: "I think a 30mph limit would be appropriate for this part of Lumb Brook Road. In fact, it should be extended along the full length of the road."

"I understand the residents' concerns, but the road is very narrow and this sometimes gives a perception of speed even when a driver is not

exceeding the limit.

"It sometimes takes a long time to persuade the highway authority about speed limits and we shall continue trying."

In the meantime the parish council has invested in a "Smiley Sid" portable speed indicator device which has been deployed by local Police Community Support Officers - including a spell at Wright's Green.

It is intended to use the device at various locations in the parish.

Long-serving councillor steps down

ONE of Stockton Heath's longest serving parish councillors has decided to step down.

Cllr Graham Roughsedge has served on the council for 18 years and has been chairman four times.

He was born in the village and served as a police officer for 30 years - 18 of them in Stockton Heath.

Parish council chairman Cllr Helen Dutton said: "Graham has a unique record of service to the local community, both as a councillor and as a police officer. He will be sorely missed."

Cllr Roughsedge said: "I have enjoyed my time on the parish council and I will miss the work. I have always taken a close interest in the village and particularly Stockton Heath Walking Day and also Ackers Pit.

"Of course the village has changed a lot over the years - it's not really a village now. But I would not have wanted to live anywhere else."

Members of the council paid tribute to Cllr Roughsedge who cites health issues as the reason for his resignation.

Lambing keeps farm staff busy



Lisa Thompson gets up close with a woolly new arrival.

FARM staff at Tatton Park have been kept busy in the run-up to the lambing season.

Twenty four ewes were expected to lamb and staff were predicting seven single lambs, 16 sets of twins and one set of triplets by the middle of April.

This means visitors to the farm during "Lambing Fortnight" from April 8-17 can expect to see many woolly new arrivals.

They will be to meet the new spring lambs, listen to educational talks and take part in fun creative activities. Of course, there is also the possibility of being lucky enough to see lambs actually being born!

There will be a charming new farm trail to find Little Baa, the little lamb from Kim Lewis's popular farmyard

stories - and a chance to "meet the author" on Saturday, August 2.

In addition to the farm's mainly Suffolk cross flock, there are also three rare breed Leicester longwool ewes expecting five lambs between them. The Leicester longwools are considered "vulnerable" on the Rare Breeds Survival Trust's watch-list and so the addition of potentially more females to the Tatton flock is very special.

Farm manager, Jayne Chapman said: "Lambing is really hard work but all the effort is certainly worth it as soon as you see, smell and hear the arrival of the newly born lambs. Nothing is more endearing than seeing the lambs happily skipping about in the spring sunshine."



HIIT!

Anyone with their finger on the pulse of fitness trends will know HIIT – “high-intensity interval training” is very big this year. You may not want to spend your summer fortnight sweating through effort (you may wish to reserve this for sweating off sun cream on the beach!). But a long weekend full of activities to get your pulses racing might be more tempting! There are great selections of short activity breaks available. Who would want to hit the gym when they could be bob-sledding, surfing or canoeing instead?

WALK THIS WAY

Leisurely Self-Guided Walking in the Cinque Terre might appeal. Graded easy to moderate; you can amble through vineyards and olive groves between the five famously picturesque fishing villages on the craggy Ligurian Riviera. Prices start at £415, including four nights B&B. Flights are extra.

ON YOUR BIKE

Cycling is having its moment in the sun, so you might consider a two-wheeled adventure.

For Tour de France fans, there are five new road cycling parks available, with free road cycling routes and maps



available before and during trips. These are located in the French Alps, Austria and the Costa Dorada, Spain. For those who don't want to cycle, or for time out of the saddle, the parks offer facilities such as water slides, tennis courts and golf.

GO WITH THE FLOW

There are also options for those who prefer water-based action. The Medoc peninsula, an hour north of Bordeaux, is popular with surfers, and the Residence Bleu Marine just outside the resort of Lacanau Ocean has recently opened. It offers direct beach access and there is a surf school, so beginners can learn to ride the waves.

THRILLS AND CHILLS

Snowy activities are a whole heap of fun, especially for families. Arctic short breaks can offer night-time husky safari and snowmobiling. You can try ice-fishing and snowshoeing to look for the northern lights. For

added glamour, guests can book a helicopter transfer from Tromsø. For those who want to try something really different and live out any ‘cool running’s’ fantasies, try the Lillehammer Bobsled Weekend. The trip is for over-16s, but no previous experience is necessary, with qualified pilots at the Olympic Park in Hunderfossen on hand as clients hurtle down the ice facing forces of up to 5G.

PARK LIFE

A host of activities is on offer at holiday parks in the UK, with short travel times making them ideal for a short break. Go Active short breaks are available at 15 countryside lodge locations across the UK. Core activities include fencing, archery and cross bows, snorkelling and sea scooters, WaterWalkerz and Body Zorbs. Adrenaline seekers can try abseiling, mountain biking and kayaking. There is also yoga and pilates for those who like their action a little more relaxing.

Football academies are new to the activity programme this year. Five to



■ Linda Crowder – Stockton Heath Travel

16 year-olds can receive dedicated coaching with certificates and prizes awarded. Many other activities are on offer, from sailing to bush craft.

Something to suite everyone, but remember to keep active breaks short and you cannot go wrong!



We are open Monday to Friday 9am to 5pm and Saturdays 9am to 4pm. If you cannot make these times we are happy to arrange an appointment at your convenience.

80 London Road, Stockton Heath
01925 269400

enquiries@stocktonheathtravel.com

Follow us on twitter @stocktonhthtv, facebook and linkedin

Keep the village alive support your local traders!

Warrington's only supplier of German kitchens



JD Kitchens

- ✓ Luxury German & UK Kitchens
- ✓ Family Business
- ✓ Est 2001
- ✓ Backed by KBSA Consumer Protection Scheme



Visit us at:

4 Gorsey Lane,
Warrington
WA1 3PU

FREE Recipe book when
you bring this advert

www.jdkitchens.co.uk

01925 636997

sales@jdkitchens.co.uk



A bridge repair too far angers villagers

VILLAGERS have been left shocked and outraged at “unsympathetic” repairs being carried out on an historic bridge over the Bridgewater Canal at Walton.

The Grade II listed building, which crosses the Bridgewater Canal near the Walton Arms pub, was badly damaged after being struck by a lorry carrying a supply of bricks last month.

But contractors working for the bridge owners Peel, have been using modern bricks to repair the damage, completely out of character with the existing brick work.

The original bricks which had been knocked over have also disappeared from the site.

Local councillor Paul Kennedy said: “If the new brick work was being done on a modern bridge it would be lovely - but it is completely out of character with the existing brickwork and looks

a complete mess.

“I think it is fair to say these repairs are not acceptable - I would also like to know where the missing bricks have gone - they should have been used as part of the repair work.”

Cllr Kennedy added that Warrington Borough Council had already set up an enforcement file in the event that Peel fail to carry out sympathetic and appropriate repairs.

Meanwhile local residents have called for a traffic plan for the area to avoid further incidents.

Peel Holdings say work is still in progress to complete the rebuilding of the parapet wall and agreed salvaging the original bricks would be

the ideal solution but unfortunately in this instance, with the mortar being stronger than the original brick, it was not possible to do this.

The Contractor had been instructed to replace the wall with as close a match possible to the original wall, bearing in mind it has been repaired in the past with three of four different brick types, and also the practical

considerations of availability/length of time the road remained closed.

They believe the match is reasonable and intend to artificially weather the brickwork to make it more in keeping with the original.

A spokesperson said: “Rest assured we try to carry out any repair work sympathetically to retain the character of the canal.”



Local sports player launches exercise for older people

People living in and visiting Belong Warrington, the community care village on Loushers Lane, are exercising to improve their mobility, with the help of new fitness instructor Aaron Williams, 27, who plays for Grappenhall Sports FC and lives in Stockton Heath.

The exercise studio at Belong Warrington, which is open to members of the local community, features specialist equipment for older people.

Aaron joined Belong Warrington as a Fitness Instructor and Support Worker, and creates personalised exercise plans tailored to the needs of individuals using the village exercise studio, promoting independence and good health for older people. Regular exercise has also been proven to reduce the risk of the onset of dementia.

Aaron said: “I’ve played football all of my life and my family owned a gym when I was growing up, both of which have driven me to develop a keen interest in health and fitness. I studied Sport and Exercise Science from Edgehill University and it feels great to use the things that I’ve learned to help people living in Warrington. Belong is committed to helping people stay active and independent through regular exercise and I’m already seeing some terrific results from the people visiting our exercise studio.”

Resident Peggy Gordon, who uses the exercise studio regularly, said: “My Dad was a doctor and always encouraged me and my seven siblings to take part in athletics and keep fit as youngsters. I thoroughly enjoy using the gym with Aaron. It gets my day off to a great start.”

Proven benefits of regular exercise include decreasing stiffness and pain, which in turn helps improve balance

and coordination, making a huge difference to the daily lives of people in Belong Warrington and helping with falls prevention. Associated benefits also include lower blood pressure, improved memory, sleep patterns and mood.

The Belong Warrington exercise service is modelled on Belong’s award-

winning ‘Independence through Exercise’ programme in Macclesfield, which won global recognition in the 2013 Excellence in Ageing Awards, run by the International Association of Homes and Services for the Ageing (IAHSA).

The Belong Warrington exercise studio offers a friendly, person-

centred approach to exercise, designed for mature customers as an alternative to traditional gyms. Facilities throughout the care village, including the bistro and hair salon, are open to the public. Call Aaron Williams on 01925 593800 to discuss taking part in a personalised fitness programme.





Outstanding care in a magnificent setting

Day care with a difference

Support at home

Respite stays

Nursing care

Award winning care

Dementia expertise

Belong Warrington is a brand new village complex in the heart of the community and provides:

- Specialist dementia and nursing care
- Innovative household model
- Experience Days service offering fulfilling day care with a difference
- Belong at Home service providing practical and emotional support to you in your own home
- Independent living in modern one or two bedroom apartments
- Village centre open to the public with amenities including licensed bistro, hair and beauty salon and specialist exercise studio
- Respite stays welcome

To find out more please call us on 01925 321 400 or visit www.belong.org.uk
BELONG WARRINGTON | Loushers Lane, Warrington WA4 6RX

Belong villages are located in: Atherton, Crewe, Macclesfield, Warrington and Wigan.



Your life, your pace, your way.

YOUR NUMBER ONE CHOICE









In 2014, A-Level students secured a pass rate of 99% or above for the 10th year in a row

PLACES STILL AVAILABLE FOR SEPTEMBER 2015

More students succeed in their A-Levels at Priestley than anywhere else in Warrington

Priestley offers more subject choices than any other college or sixth form in the area

















***Based on figures published by the Department for Education in January 2015.**

PRIESTLEY COLLEGE WARRINGTON

Apply online www.priestley.ac.uk or call 01925 415415

Bank sets students a smartphone challenge

A BANK tasked students on how they would market its innovative smartphone service.

Barclays Bank set the BTEC Graphic Design students at Priestley College the task of creating a marketing storyboard to promote Pingit – a service that allows users to send and receive money with just a telephone number.

"We asked the Priestley students for their ideas on how they would market Pingit to people in their age group," said Julian Bucknall, of Barclays.

"This is the second year we have worked with Priestley and once again have been really impressed with the students' creativeness and professionalism."

Barclays processes millions of transactions for its customers every day, managed from technology centres like Radbroke Hall in Knutsford.

In a second brief, Art and Design students were asked how they would redesign one of the buildings on the 64-acre campus.

"We have to thank Barclays for giving our students the opportunity to work with a global bank on a live brief," said Tutor Paul McConnell.

"It is invaluable experience and an amazing achievement for our students to have on their university applications and CVs."

Former Birchwood Community High pupil Elli Hill was judged to have the best ideas for the building redesign and ex-Lymm High School pupil Jennifer Hall's storyboard for Pingit impressed Barclays the most.



■ Students with their designs.

Canal safety barriers may soon be erected

SAFETY barriers may soon be installed along a canal-side road where an elderly woman died tragically when her car plunged through a flimsy fence and into the water.

Cllr Celia Jordan has been told by Peel Ports, owners of the Manchester Ship Canal, that consideration is being given to erecting safety barriers in Ellesmere Road, Stockton Heath.

She said: "I have spoken to Peel about it and have been told that it is in hand to put barriers in place."

It was in March last year that 72-year-old Valerie Pritchard, from Grappenhall, drowned when her car

careered into the canal.

She had been driving down Egerton Street and it believed she mistook the accelerator for the brake and drove out of the junction, across Ellesmere Road and into the canal.

The metal fence along the canal-side was not strong enough to stop the car.

Cllr Jordan (pictured) said: "Apparently there are safety barriers along the canal at similar junctions in other areas. We urgently need them in Stockton Heath too."

Stockton Heath Parish Council has been pressing for barriers ever since the tragedy.



Parish councils appoint new clerks

NEIGHBOURING parish councils have both appointed new clerks.

Stockton Heath's new clerk is Jo Cope, from Lymm while Appleton Parish Council has appointed Joanne Monks, from Frodsham.

In recent years, the two councils have shared the same clerk but it has been decided that because of the increasing amount of work involved, the role should be split.

Under the new arrangement, the Stockton Heath office at the Sandy Lane Centre will be open on Monday and Wednesday mornings and all day Thursday while the Appleton office at Appleton Parish Hall will be open on Monday, Wednesday and Friday mornings.

Assistant clerk Peter Briggs will continue in post at both councils.

Joanne Monks is also clerk to Delamere and Oakmere parish councils, which are shortly to be merged and will continue to act as clerk to the merged authority.

£100,000 improvement of church interior

WORK has started on a £100,000 refurbishment of the interior of All Saints Church, Thelwall.

It will include opening up the social area at the back of the church for community groups and meetings, a complete refurbishment of the lights, new carpeting and additional chairs.

Churchwarden Mike Horne said the work has been largely funded through the generosity of various grant funders, including WREN, as well as donations from the community.

Seven years of thought and planning had gone into the scheme and the work should be completed by the end of May.

All Saints Church dates from 1843, although it was built on the site of an earlier chapel believed to date from before 1663.

The church was built because the chapel held only 80 people and the local population had grown to more than 300.

It was enlarged again in 1856 and in 1890 a new north aisle was added.

Runners take to the country lanes



James Wignall and Andrea Hilldrup-Kershaw receiving the Robert Moffat Memorial Trophy from Howard Moffat.

HUNDREDS of runners took to the country lanes to take part in the annual High Legh Robert Moffat Memorial 10k.

The race was won by James Wignall from Sale Harriers in a time of 33.01. The first female across the finish line was Andrea Hilldrup-Kershaw, representing Vale Royal Athletic Club, in 38:49.

They were presented with the new Robert Moffat Memorial Trophy, by Howard Moffat, an ancestor of Robert Moffat – a famous missionary who lived in High Legh in the 1800s.

It was the eighth year the race, organised by Lymm Runners and High Legh Community Association, had been held and once again it was over-subscribed and started with a full entry list of 650.

Many of those taking part had completed the free Lymm Runners beginners' course which started in January and aims to prepare people to be able to run the 10k race.

Chris Lees, Lymm Runners captain and race director, said: "Every year the community comes out to support this event, and this year was no exception. A huge thank-you to everyone who raced and those who supported us by volunteering, spectating, sponsoring and providing a venue and refreshments for the event. We have had fantastic feedback and we're already looking forward to next year's race."

Next year's event will take place on February 28.

Parish to show its pride

GRAPPENHALL and Thelwall Parish Council has decided to enter the Cheshire Community Pride competition next year.

A residents' group will be set up to look at the requirements and judging criteria and to identify areas of need. A list of local organisations will be produced to look at where improvements might be made and posters will be produced to appeal for local residents to come forward and get involved.

Money Column

By Margaret Black

'Rent a Room' scheme – how it works and tax rules

You can enjoy an extra £4,250 of income tax free, from letting out furnished accommodation in your home. This is halved if you share the income with your partner or someone else. You can let out a room or an entire floor and then sign up to the 'Rent a Room' Scheme with the Inland Revenue.



David Watkinson and Margaret Black

Who's eligible for the Rent a Room scheme?

The 'Rent a Room' scheme is an optional scheme that's open to owner occupiers or tenants who let out furnished accommodation in their main home to a lodger. It allows you to earn up to £4,250 a year tax-free, or £2,125 if you are letting jointly.

You don't have to be a homeowner to take advantage of the scheme. If you are in rented property you can also lease out a room to a lodger but do check that your own lease allows you to do so.

Opting in or out of the scheme

If the amount you earn from renting out the room is less than the thresholds of the 'Rent a Room' scheme as quoted above, then your tax exemption is automatic and you don't need to do anything. If you earn more than the threshold, you must complete a tax return.

You can then do one of the following:

- Choose to opt into the scheme – in which case you need to let HM Revenue & Customs know this on your tax return and claim your tax-free allowance, or
- Not opt into the scheme but simply record the rental income together with any associated expenses on the property pages of your tax return, if there is no other income you would still claim your tax free allowance

To ask to be sent a tax return if you don't normally receive one, contact the Inland Revenue and ask for one. Please note that this would need to be completed by yourself and submitted to the Inland Revenue by the due date. If you wish we could assist further in this matter and for a small fee, if instructed we could prepare and submit your tax return to the Inland Revenue on your behalf.

Please note that the advice above is pre March 2015 budget. For a summary of the budget together with other important topics like auto enrolment, tax relief for married couples and other helpful subjects check our website: www.warringtonaccountants.co.uk

Free no obligation meeting – Contact us on 01925 413210

Please note that these ideas are intended to inform rather than advise and you should always obtain professional advice before taking any action.

Watkinson Black
Accountants who care for Clients who matter



Chartered Accountants
Registered Auditors

Contact David Watkinson or Margaret Black at:
1st Floor, 264 Manchester Road, Warrington

Tel: 01925 413210

or email: info@warringtonaccountants.co.uk
www.watkinsonblack.co.uk

EXCHANGE YOUR GOLD AND SILVER FOR INSTANT CASH



All items of jewellery accepted

Did you know...?

We accept silver jewellery, cutlery, tea sets, spoons, cigarette cases, candlesticks, trophies, trays, medals, coins and pocket watches.

**ROLEX WATCHES WANTED!
ANY CONDITION**

Open: Tuesday-Saturday: 10am - 5.30pm

1 London Road, Stockton Heath
(First floor entrance on Fairfield Road)

07544 486 621



**GOLD & SILVER
BULLION DEALER**

**Do you play sport?
Keep picking up injuries?**



CHESHIRE
Natural
Health

**Sports
Massage**

with Kate Tosney MFHT
Can help keep you in top form

Please call to find out more
Tel: **01925 730123**
www.cheshirenaturalhealth.co.uk
Cheshire Natural Health, Beehive House, Tarporley Road, Stretton, Warrington



Thelwall Upholstery

FOR THE MOST COMPETITIVE RATES IN THE AREA

49 Knutsford Road, Grappenhall WA4 2NR
Call Sean on: **01925 604770** or mobile: **07799 228080**
www.upholsterywarrington.co.uk

For all your upholstery needs

SPECIALISTS IN:

- Re-filling Cushions • Re-springing • Full Re-upholster
- Dining Furniture • Headboards

A wide range of sample books to choose from
All at competitive rates

PHONE FOR YOUR FREE ESTIMATES



Alex is back at the
**STOCKTON
FRYER**

111 London Road, Stockton Heath

**Fish & Chips, Chinese Meals,
Burgers, Kebabs and more...**

We deliver to WA4: Stockton Heath, Stretton, Latchford,
Appleton Thorn, Grappenhall, Pewterspear, Walton

Minimum order of £10 (£1 delivery charge applies)
Over 4 mile radius £2 delivery

Phone orders for Chinese meals welcome **01925 264345**

Open lunchtime and from 4.30pm.

Late closing Thurs & Sat (11pm) and Fri (11.30 pm)

**New
Menus
Coming
Soon!**

U
urban
BUILDING PROJECTS LTD

**ARE YOU
CONSIDERING
EXTENDING
OR RENOVATING?**



For a **FREE** consultation
please call **01925 730888**

info@urbanbuildingprojects.co.uk

www.urbanbuildingprojects.co.uk

410 Europa Boulevard, Gemini Business Park, Warrington WA5 7TR



Learn to Paint in Oils

Start an amazing new hobby

Oil Painting Courses by Marc A Turner
Grappenhall youth and community centre.

The new courses launched for 2015 in Warrington

Marc has over 20 years experience in painting and works part time for a professional painting school in Norfolk.

The two day courses cost £120
all materials, hot drinks and snacks included

Courses run from 10am to 4pm with a 30 minute lunch break.

The Basic workshop is an introduction to painting in oils
for complete beginners

The Foundation workshop is a structured course developing from the
basic course including colour mixing, value planning and different
techniques; direct and indirect painting.

En Plein Air workshop will be painting open-air then developing a
painting in the studio.

Course dates

Foundation Oils Apr 25-26 Structured course for anyone
interested in advancing basic
oil painting skills

Contact Marc: **07779320362** or **01925495718**

Email: info@marc-a-turner.com

Website: www.marc-a-turner.com

Dream comes true

After many years creating for the joy of it, Mark Turner has now embarked on the career he has been destined for, Art and painting.

His joy for art began at a very young age when he was inspired by his father's drawings. This inspiration led him to begin practicing in watercolours. He specifically remembers looking out towards the hills at Hagenohsen to paint the beautiful landscape in 1984 and realising that not many hobbies could beat this one. From this point on his interest in painting and artwork intensified.

He continued to paint in watercolour with a little dabbling in other mediums for many years, and later decided to take oil painting more seriously and improve his skills. He looked high and low for a good course and eventually found the Norfolk Painting School and Louis Smith Art and has never looked back.

Eventually he was asked to work for the NPS and continues to do so, on a part time basis.

He now intends to indulge in his venture with the greatest of passion, and pass his knowledge on to others who want to learn.

Reader's letter

Send your correspondence to: The Editor, Village Life, New Media Centre, Old Road, Warrington WA4 1AT or email: info@warrington-worldwide.co.uk

Walton Bridge repairs James Gibson, RIBA Specialist Conservation Architect

I strongly support Peter Priestner's correct observation (Village Life, March issue) that Walton Bridge is a listed structure (now called 'heritage assets') and that it should be repaired precisely with a 'like for like' approach.

Peel Holdings should submit a detailed repair building specification to WBC's Planning Service to ensure that Listed Building Consent is not required for any proposed repairs. It is possible that suitable bricks can be salvaged from the demolished walls and laid with the same bonding. The heavy stone copings may also be salvaged for re-instatement if not damaged. It is vital that replacement stone copings are of the same geological character as those damaged - and curved to suit the curve of the bridge if the originals were curved. Lime - sand mortars should be used (cement mortars are too hard and crack and may weaken the bridge).

Red Lane Bridge is also listed as is Hough's Lane Bridge, but concrete copings have been used on Red Lane Bridge and these should have been re-instated in matching stone to the original.

All three bridges should have weight restrictions put on them - Red Lane Bridge has a 3 ton axle restriction and is occasionally crossed by heavy vehicles. I have previously contacted Cheshire Police about this, but it is difficult to enforce and the penalties are not too onerous.

Peel Holdings should reclaim the full costs of repair from the transport company whose lorry caused the damage.



We Clean Ovens ...so you don't have to!

Call us today to leave your cooking appliances sparkling, using our eco friendly products.

oven
oven valeting service
Local | National | Affordable

Our oven cleaning experts will leave you free to enjoy your valuable leisure time.

Call for LOCAL service
01925 453377 oven.co.uk

The co-operative funeralcare

We are available, 24 hours a day, 7 days a week.

- Pre-paid Funeral Plans
- Memorial Masonry

Stockton Heath
63 London Road
01925 262 000

Warrington
Bewsey Road
01925 445 555

www.co-operativefuneralcare.co.uk

High quality care at reasonable prices

Grappenhall DENTAL PRACTICE

Independent private practice
Private dentistry at NHS prices (conditions apply)
Now taking new clients due to expansion after 8 successful years
Easy parking/ground floor easy access including wheelchair
State of the art equipment / highest standards of cleanliness / cross infection control
Emergencies seen same day / no waiting lists
Late night opening Tuesdays until 8pm

Dr Andrew Brown and associates welcome new patients

Tel: **01925 210977** or **01925 481341**
148 Knutsford Road, Grappenhall, Warrington WA4 2PW
grappenhall.dental.practice@virginmedia.com
www.dentistswarrington.co.uk

What's on in the villages

- April 7**
STOCKTON HEATH PARISH COUNCIL
Sandy Lane Centre, Stockton Heath. 7.30pm
- April 14**
APPLETON PARISH COUNCIL
Parish Hall, Dudlow Green Road. 7.30pm
- April 16**
GRAPPENHALL & THELWALL PARISH COUNCIL
Council Offices, Bellhouse Lane. 7.30pm
- April 18**
LIVE AT ST WILFRID'S
Aquarelle Guitar Quartet - a dynamic, award-winning group playing music from a wide range of styles, periods and cultures.
St Wilfrid's Church, Grappenhall Village. 7.30pm
- Every Sunday**
GRAPPENHALL HEYS WALLED GARDEN
Witherwin Avenue, Grappenhall Heys, WA4 3DS.
Café open from 1-4pm serving teas, coffee, home-made cakes and savouries.
- Every Monday**
ST MARY MAGDALENE MONDAY CLUB
St Mary Magdalene Church, Appleton 1.30pm
COUNTRY DANCING CLUB
St Thomas' Primary School, Parkgate Road, Stockton Heath. 8-10pm. Details: 01925 262356
BRIDGE CLUB
Belong Warrington, Loushers Lane. 7.30pm. Details 01925 262534 Carol Bingham
LADIES' FRIENDSHIP CLUB
The Quays Community Centre, Thelwall New Road, Thelwall. 8pm. Details: 01925 264099
HIGH LEGH RUBBER BRIDGE CLUB
Village Hall, 7-10pm.
Details: Audrey Greaves 0161 904 0120
- Every second Monday**
PARK (APPLETON) WI
Appleton Parish Hall, Dudlow Green Road. 7.30pm
- Second and fourth Monday**
WARRINGTON ART GROUP
Bellhouse Community Centre, Bellhouse Lane, Grappenhall. 7-9pm.
- Every third Monday**
NATIONAL VEGETABLE SOCIETY
Cheshire District meeting
Grappenhall Ex-Servicemen's Club, Chester Road, Grappenhall. 8pm. Details: 01925 265773.
- Every fourth Monday**
MARLFIELD WI
Grappenhall Community Library, Albert Road, Grappenhall. 7.30pm
- Every Tuesday**
COFFEE MORNING
St Cross Church, Appleton Thorn. All welcome. 10am-12 noon
PHOTOGRAPHIC SOCIETY
Quays Community Centre, Thelwall New Road, Thelwall. 7.30pm.
Contact: 01925 757582.
- COFFEE MORNING**
Appleton Independent Methodist Church
Appleton Parish Hall, 10am-12 noon
- Every second Tuesday**
STOCKTON HEATH LIONS CLUB
London Bridge Inn, 8pm
Contact: Grahamclisse58@outlook.com.
Tel 01925 262669
- Every Wednesday**
APPLETON HALL BADMINTON CLUB
September - April at Hall Drive, Appleton. 7.30-10pm. Details: 01925 262356
- Every first Wednesday**
WALTON WI
St John's Church Community Hall. 7.30pm
Details: 01925 604384
- STOCKTON HEATH PROBUB CLUB
Warrington Sports Club, Walton Lea Road, Higher Walton. Details: 01925 268540
- Every third Wednesday**
HIGHER WALTON WI, St John's Community Hall, 7.45pm. Details 01925 262001.
- Every fourth Wednesday**
ALZHEIMER'S SOCIETY
Support Group, Brampton Lodge Day Centre, Bridge Lane, Appleton. 6.30-8.30pm
- Every Thursday**
THE SILVER QUAYS Senior Citizen's Club
The Quays Community Centre, Thelwall New Road, Thelwall. Details: 01925 753474.
BRIDGE CLUB
Belong Warrington, Loushers Lane. 7.30pm. Details 01925 262534 Carol Bingham
- Every second Thursday**
STRETTON WI
Appleton Parish Hall, Dudlow Green Road. 2.30pm.
GRAPPENHALL PROBUB CLUB
Grappenhall Community Centre, Bellhouse Lane, 10am. Details: 01925 264427.
- Every third Thursday**
NORTH EAST CHESHIRE FLOWER CLUB
Warrington Golf Club, London Road, WA45HR. 2pm
Details: 01925 740419
- GRAPPENHALL WI
Grappenhall Community Centre, Bellhouse Lane 2.15pm
- Every Friday**
APPLETOTS TODDLER GROUP
Appleton Parish Hall, Dudlow Green Road. 9.45-11.30am. Details: 01925 268153.
- To list your event call Village Life on
01925 623632



CLASSIFIEDS

ACCOUNTANCY & BOOKKEEPING

arleys
freelance and
contractor accounting
keeping it simple...
01925 598499
www.arleys.co.uk

BATHROOMS

The Bathroom Refurbishment Co.
We can create the Bathroom of your dreams
One Warrington based Company
One Job from start to finish
Unique 3D virtual CAD design system
Please visit our website
www.bathroomrefurbishment.co.uk
Please Ring Wayne
01925 826 828 or
07976 574 828

CARPET CLEANING

SIMPLY THE BEST CARPET CLEAN YOU WILL ever have. Cleaners UK Ltd. Est 27 yrs. Have your carpets & sofas beautifully deep cleaned leaving them fresh smelling & colour restored. Latest & best methods. Dry/steam. Leather cleaning, oriental rug specialist. Professional, reliable & affordable. For more info call Neil Riley on 01925 264989/ 07831 336060 www.cleaners-uk.net

CARPETS, CURTAINS & INTERIORS

CURTAINS AND VALANCES made to measure to your own choice of fabric. Home visits to advise, measure and estimate. Free fitting. Curtain alterations also undertaken. Tel: Catherine Langley on 01925 604400. www.catherine.makescurtains.co.uk

CAR SALES

PARKVIEW CAR SALES
We buy and sell QUALITY CARS
Best price paid
Telephone Peter on
01925 575737 /
07957 545479
23 Padgate Lane
Padgate, Warrington
Cheshire, WA1 3RS

CLEANING SERVICES

arleys angels
• De-cluttering/re-organising
• Presenting your home for Sale
• Moving house assistance
• Spring/After building work cleans
01925 266834
... because you're worth it!

DOCUMENT STORAGE

FileRoom
DOCUMENT STORAGE
Box storage from less than a penny a day
Collection & delivery service
01925 732752
mail@thefileroom.co.uk
www.thefileroom.co.uk

ELECTRICAL CONTRACTORS

TRUST PROPERTY ELECTRICAL SERVICES. NICEIC Part P Approved Contractor. All Electrical work undertaken. Inspection & testing & PAT testing. All work certified & guaranteed. Call Tim on 07754409906 or 01925 601055

GARDENING SERVICES

JP LANDSCAPES
We are approved & recommended by Fountains
For contractors call 01925 393 188 and choose option 2
For a FREE no obligation quote please call
0800 858 9961 or 01925 393 188
or visit www.jplandscapes.co.uk
07818 383 384 / jplandscapes24@gmail.com
You have the right to a free written & signed contract
Vale Avenue, Warrington, WA2 8AY

LAWN DRAINAGE. Improve the drainage of your lawn in a day. No digging, no trenches, no reinstatement. Call Bob Harper 01925 266852. 07952608701.

GATES

Village Gates
Manufacturers and installers of quality timber gates
villagegates.co.uk
For free quotes and advice call
01925 552322
New Workshop and Showroom at:
8a Trident Business Park, WA3 6AX

HOME SERVICES

ATLAS
Your friendly local independent
PEST CONTROL **CHIMNEY SWEEPING**
Affordable, professional, guaranteed service.
Fully insured, fixed prices - no surprises once on site!
Discrete vehicles, no embarrassing signs
07999 487 925 / 01925 445 222
www.atlas4u.co.uk

HYPNOTHERAPY

MICHAEL MAHONEY clinical hypnotherapist for IBS, Stress, Anxiety and many other problems. Medical Research project experience, BUPA Service Provider. For FREE information sheet please email TimelineServices@aol.com or ring 01925 658322 www.healthyaudio.com

Wickes

It's got our name on it.
Wickes Warrington
Unit B Pinners Brow Retail Park
Pinners Brow WA2 7XA
01925 632 263
www.wickes.co.uk

KITCHENS

QUALITY KITCHENS SUPPLIED AND FITTED by local experienced fitters. No job too small. If you have bought a kitchen we can fit it - or we can supply and fit full kitchen units including joinery work, plastering, electrics etc. All work is guaranteed. B&L Kitchen Installations. M 07935 267200 or 01925 451883 after 6pm.

PAYROLL

WHY TRY TO BE A PAYE EXPERT? Watkinson Black can provide a cost effective payroll service, releasing you to concentrate on your business. For further details please phone: 01925 413210 or e-mail: info@warringtonaccountants.co.uk

SITUATIONS VACANT

Village Life magazine is looking to recruit an experienced
SALES PERSON
Working on our other titles including warrington-worldwide and Lifestyle magazine you will have:

- Experience of selling advertising
- You will be:
- Self motivated
- Flexible
- and computer/IT literate

The position offers a basic salary, commission and expenses.

To arrange an interview please email garys@warrington-worldwide.co.uk

TUITION

PRIMARY TUITION: EXPERIENCED PRIMARY School Teacher available for private tuition. Numeracy and Literacy. Available after School and weekends. Call 01925 268627 or Mobile: 07843 607394

PIANO & KEYBOARD LESSONS in your own home. Experienced Music Teacher - all levels taught in the local area. Competitive Rates. Tel: 01925 756189

WINDOWS & GLAZING

NEIL COPELAND WINDOWS & Conservatories Ltd. Specialist in uPVC double glazing windows, doors, porches, conservatories, also fascias and guttering. FENSA registered. All work guaranteed. Tel: 01925 756138 / 07961 361550.

SP GLAZING for all your glazing requirements, double glazed units including failed and misted units, broke windows, mirror fixing. Kite marked to B/S. Time served glazier with over 30 years experience. For a friendly no obligation quote tel Sam Pendlebury on 01942 671859. Mob 07919 660296.

CANVAS
COLOUR PRINTS
500mm x 500mm
£24.70
+VAT

50 WEDDING INVITATIONS
FULL COLOUR
£24.70
+VAT

50 A3 POSTERS
£24.70
+VAT

100 BUSINESS CARDS
£2.47
+VAT

1x A2 COLOUR POSTER
£2.47
+VAT

PRINT PROBLEMS SOLVED!
BANNERS • STICKERS • MAGAZINES
FLYERS • POSTERS
OFFICE STATIONERY
CUSTOM PRINTS
FOLDERS • CARDS • SIGNAGE

twentyfour seven
design & print ltd
info@247print.net • 01925 240247
The New Media Centre • Old Road
Warrington • WA4 1AT
the NEW MEDIA centre

Artwork needs to be supplied in a print ready format. Payment must be made when ordering.



SHORT-TERM MEMBERSHIPS AVAILABLE

JOIN OUR HEALTH CLUB TODAY FOR
4 WEEKS OF FITNESS FROM £40!

- Fitness experts offering support, motivation and advice
- 22m indoor swimming pool
- Over 35 exercise classes a week included
- Steam room, sauna and whirlpool
- Personal training available
- Cardio and resistance gym with PULSE equipment
- A friendly and sociable club

Pop into the health club or give us a call on:

01925 730 000 and quote 'VILLAGE LIFE'
parkroyalleisure@QHotels.co.uk

Stretton Road, Stretton, Warrington, WA4 4NS



AA Hotel Group of the Year
2014 - 2015



QHOTELS
INSPIRED
BY YOU

THE
PARK ROYAL
Warrington,
Cheshire



It's our 10th Birthday this year...

and to celebrate we are offering our customers

**A FREE*
NEFF
Dishwasher**
up until the end of April



authentic kitchen co
Luxury Individual Kitchens & Bedrooms

Unit B Stanley Estate, Stanley Road
Knutsford WA16 0EG
T: 01565 631 869

within Smart Furnishings, Chapel Lane,
Stockton Heath, Warrington WA4 6LL
T: 01925 212 200

www.authentickitchenco.co.uk

- High quality, contemporary and traditional kitchen designs
- Designed to your budget and tastes
- Customer satisfaction is guaranteed
- Inspirational FREE plan & design
- Fully qualified professionals
- Full project management
- 2 inspiring, Cheshire based, showrooms

*offer applies to all new quotations and must be for a full kitchen fit. Terms and conditions apply - ask for details. Model no. S51M53

LIVING • DINING • SLEEPING • FLOORING • OCCASIONAL



Easy access stairlift to furniture
FREE Parking



Smart
FURNISHINGS

STOCKTON HEATH'S
very own
HOME FURNISHINGS
DEPARTMENT STORE
modern & contemporary...



Chapel Lane, Stockton Heath,
Warrington WA4 6LL

T: 01925 267518

www.smart-furnishings.co.uk

OPEN: Mon, Tues, Weds & Fri 9am - 5.30pm. Thurs & Sat 9am - 5pm

SOFAS • SUITES • CHAIRS • DINING FURNITURE
BEDS • WARDROBES • CURTAINS
CARPETS, VINYL & LAMINATES • RUGS
OCCASIONALS • MIRRORS

